

**STANDARD DETAILS**  
**FOR**  
**PUBLIC UTILITIES DEPARTMENT**  
**WATER MAIN & WASTEWATER**  
**CONSTRUCTION DETAILS**



**PUBLIC UTILITIES DEPARTMENT**  
**UNIFIED GOVERNMENT**  
**OF**  
**ATHENS-CLARKE COUNTY**  
**GEORGIA**

<https://www.accgov.com/>

**August 2025**

## Table of Contents

---

W-1 Underground Valve Box .....	4
W-2 Fire Hydrant Assembled Detail.....	5
W-2A Fire Hydrant Assembled Connected to 8" Water Main Detail.....	6
W-3 Water Service & Meter Connection .....	7
W-3A 3" and Large Water Service & Meter Connection .....	8
W-4 Air Valve - Automatic .....	9
W-5 Water Valve Marker .....	10
W-6 Typical Valve Location .....	11
W-7 Trust Block Detail .....	12
W-8 Gate Valve Detail.....	13
W-9 Cut and Plug Detail .....	14
W-10 Fire and Service Detail.....	15
W-11 Fire and Domestic Service Detail.....	16
W-12 Fire, Domestic & Irrigation Service Detail .....	17
W-13 Back Tap Installation Detail.....	18
W-14 Water Pipe Bedding Detail .....	19
W-15 Dead End Fire Hydrant Assembled Detail .....	20
W-16 Dead End Fire Hydrant prepared for Future Extensions Detail.....	21
PS-1 Pumping Station (6' diameter wetwell).....	22
PS-2 Pumping Station (8' diameter wetwell).....	23
SS-1 Service Connection on New Sewers.....	24
SS-2 Water Stop Collar .....	25
SS-3 Deflection Test Mandrel.....	26
SS-4 Concrete Pier.....	27
SS-5 Concrete Pier Footing.....	28
SS-6 Pipe Anchorage .....	29
SS-7 Sanitary Sewer Pipe Bedding Detail .....	30
MH-1 Frame and Cover Manhole Detail .....	31
MH-2 Frame and Cover Private Manhole Detail.....	32
MH-3 Watertight Frame and Cover Manhole Detail .....	33
MH-4 Boot Connection .....	34
MH-5 Large Diameter Manhole Base.....	35
MH-6 Manhole Base with Hole Connection .....	36

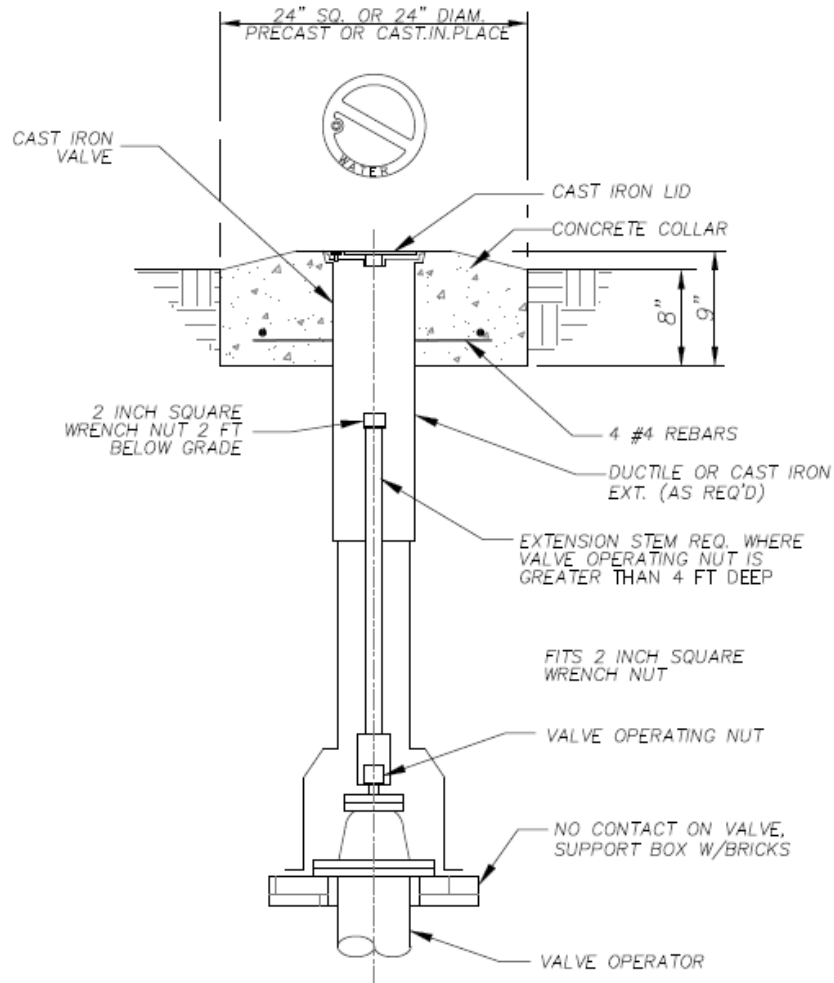
## Table of Contents

---

MH-7 Doghouse - Manhole Over Existing Sewer.....	37
MH-8 Force Main Discharge Manhole Type 1 .....	38
MH-9 Force Main Discharge Manhole Type 2 .....	39
MH-10 Manhole Collar.....	40
MH-11 Manhole Step.....	41
MH-12 Sample Manhole .....	42
MH-13 Industrial Sample Manhole.....	43
MH-14 Standard Concrete Manhole.....	44
MH-15 Outside Drop Manhole .....	45
MH-16 Sewer Main Diversion .....	46
G-1 Paving Cut Detail .....	47
G-2 Vertical Bend Detail.....	48
G-3 Casing and Spacer Detail .....	49
G-4 Bollard .....	50

# W-1 Underground Valve Box

DET-W-01-- UNDERGROUND VALVE BOX.dwg



**Underground Valve Box**  
NTS

W-1

Standard Specification and Detail for:

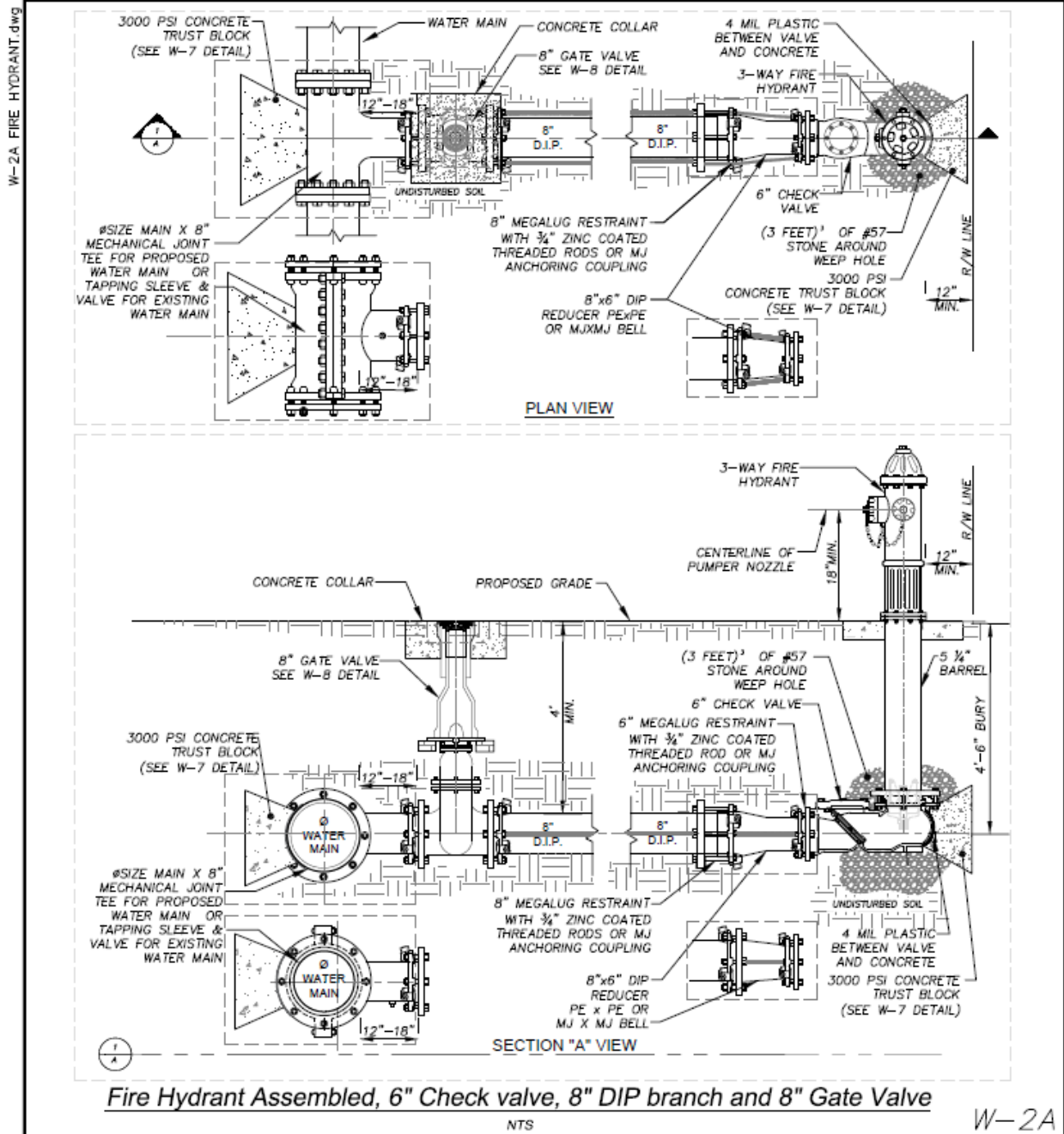
## Underground Valve Box

GMD: NA	County: Athens-Clarke	State: Georgia	Date: August, 2019
Drawn by: KFM	The Unified Government of Athens-Clarke County <b>Department of Public Utilities</b> 124 E Hancock Ave Athens, Georgia 30601 Fax: 706-613-3198      Voice: 706-613-3490		
Approved by: GJ			
Scale: AS-SHOWN			





# W-2A Fire Hydrant Assembled Connected to 8" Water Main Detail



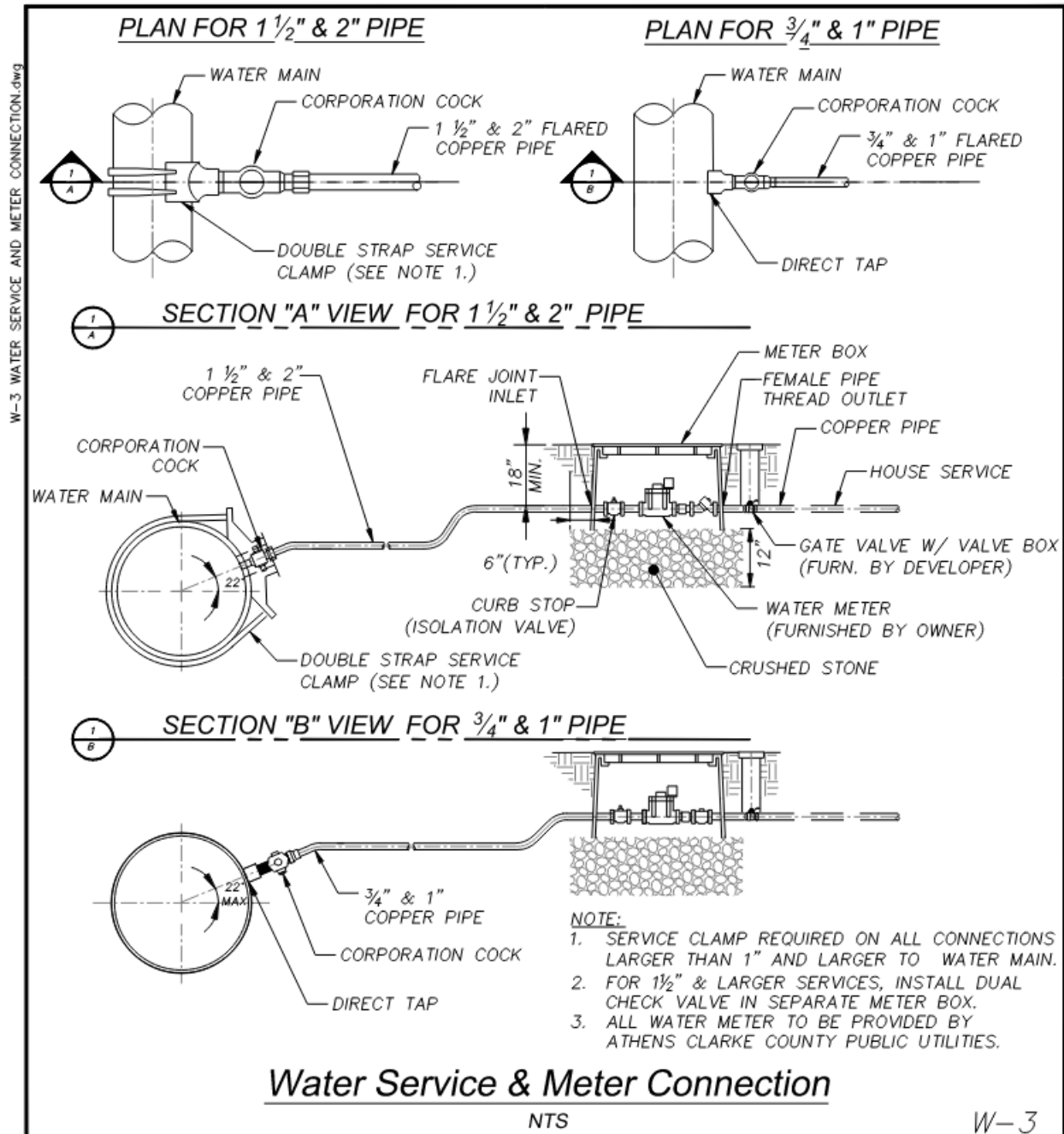
Standard Specification and Detail for:

Fire Hydrant Assembled, 6" Check valve, 8" DIP branch and 8" Gate Valve

GMD: NA	County: Athens-Clarke	State: Georgia	Date: November, 2022
Drawn by: KFM	The Unified Government of Athens-Clarke County Department of Public Utilities 124 E Hancock Ave Athens, Georgia 30601		
Approved by: MRA			
Scale: AS-SHOWN			
Fax: 706-613-3198		Voice: 706-613-3490	



# W-3 Water Service & Meter Connection



## Water Service & Meter Connection

NTS

W-3

Standard Specification and Detail for:

### Water Service & Meter Connection

GMD: NA County: Athens-Clarke State: Georgia Date: June, 2025

Drawn by: KFM

The Unified Government of Athens-Clarke County

Approved by: MRA

**Department of Public Utilities**

Scale: AS-SHOWN

Fax: 706-613-3198

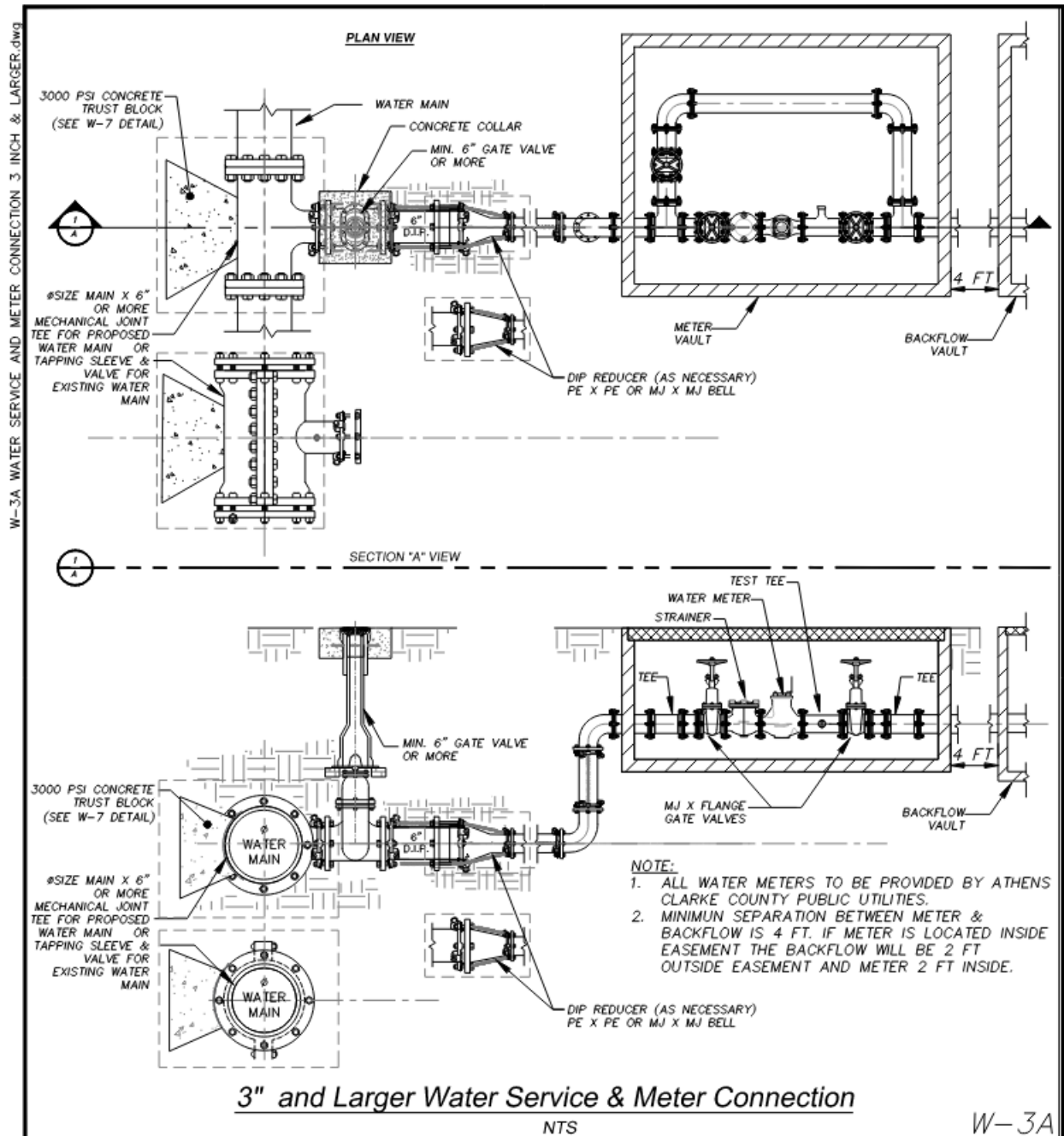
124 E Hancock Ave  
Athens, Georgia 30601

Voice: 706-613-3490





# W-3A 3" and Large Water Service & Meter Connection



Standard Specification and Detail for:

## 3" and Larger Water Service & Meter Connection

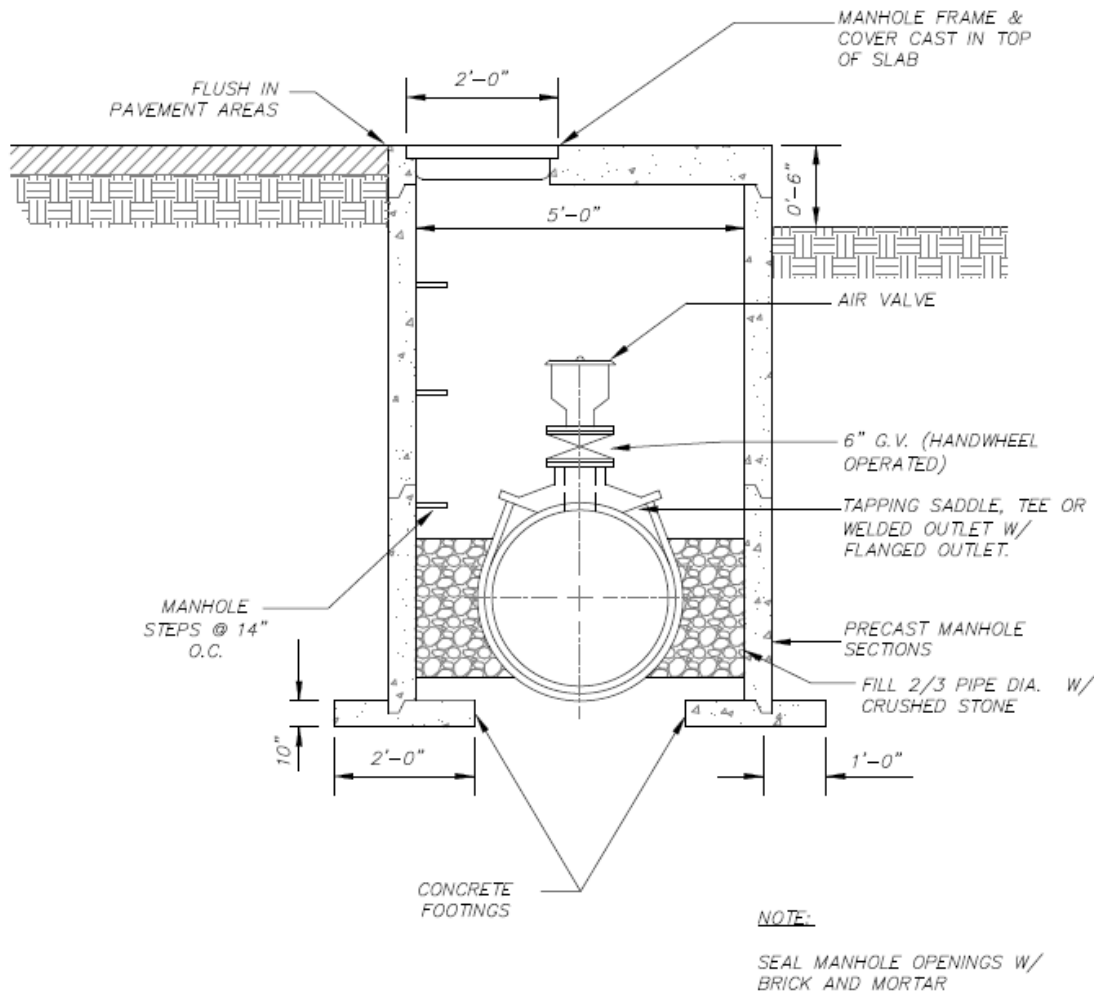
GMD: NA	County: Athens-Clarke	State: Georgia	Date: June, 2025
Drawn by: KFM	The Unified Government of Athens-Clarke County <b>Department of Public Utilities</b> 124 E Hancock Ave Athens, Georgia 30601 Fax: 706-613-3198      Voice: 706-613-3490		
Approved by: JH			
Scale: AS-SHOWN			





# W-4 Air Valve - Automatic

DET-W-04 - AIR VALVE-AUTOMATIC.dwg



## Air Valve - Automatic

NTS

W-4

Standard Specification and Detail for:

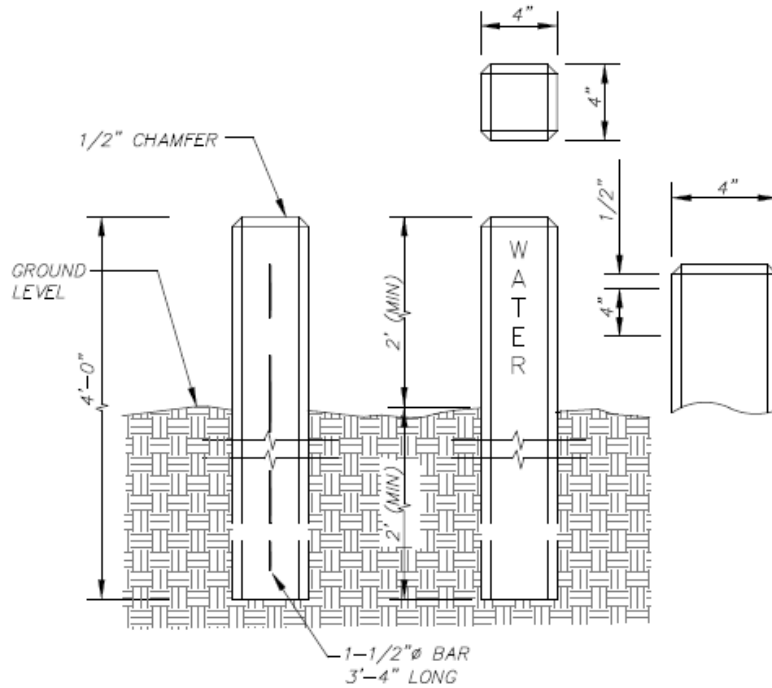
*Air Valve - Automatic*

GMD: NA	County: Athens-Clarke	State: Georgia	Date: August, 2019
Drawn by: KFM	<b>The Unified Government of Athens-Clarke County</b> <b>Department of Public Utilities</b> 124 E Hancock Ave Athens, Georgia 30601 Fax: 706-613-3198      Voice: 706-613-3490		
Approved by: GJ			
Scale: AS-SHOWN			



# W-5 Water Valve Marker

DET-W-05 - WATER VALVE MARKER.dwg



NOTE:  
VALVE MAKER POST TO BE 3 FEET BEHIND VALVE.

## Water Valve Marker

NTS

W-5

Standard Specification and Detail for:

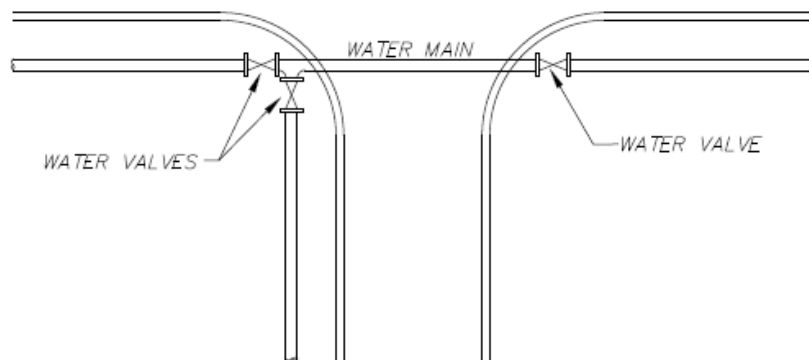
Water Valve Marker

GMD: NA	County: Athens-Clarke	State: Georgia	Date: August, 2019
Drawn by: KFM	The Unified Government of Athens-Clarke County <b>Department of Public Utilities</b> 124 E Hancock Ave Athens, Georgia 30601 Fax: 706-613-3198      Voice: 706-613-3490		
Approved by: GJ			
Scale: AS-SHOWN			



## W-6 Typical Valve Location

DET-W-6 - TYPICAL VALVE LOCATION.dwg



NOTE:

AT STREET INTERSECTIONS PLACE VALVES AS SHOWN.

### Typical Valve Location

NTS

W-6

Standard Specification and Detail for:

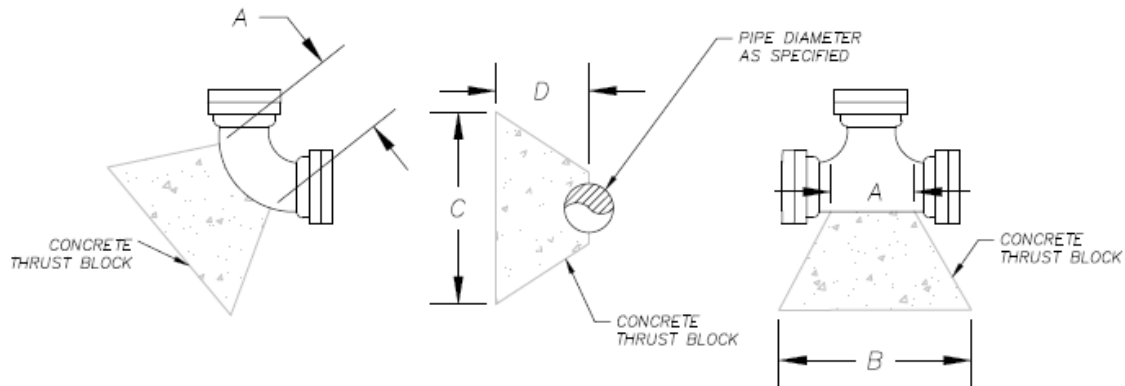
### *Typical Valve Location*

GMD: NA	County: Athens-Clarke	State: Georgia	Date: August, 2019
Drawn by: KFM	The Unified Government of Athens-Clarke County <b>Department of Public Utilities</b> 124 E Hancock Ave Athens, Georgia 30601 Fax: 706-613-3198      Voice: 706-613-3490		
Approved by: GJ			
Scale: AS-SHOWN			



**W-7 Thrust Block Detail**

DET-W-7 - THRUST BLOCK.dwg



90 DEGREE BEND					
PIPE DIA. (INCHES)	DIMENSIONS (FEET)				
	A	B	C	D	
24	3.0	7.0	7.0	4.5	
20	2.5	6.0	6.0	4.0	
18	2.0	5.5	5.0	3.5	
16	2.0	5.0	5.0	3.5	
14	2.0	4.0	4.0	2.5	
12	1.5	3.5	3.5	2.5	
10	2.0	3.0	3.0	2.0	
8	1.0	2.5	2.5	2.0	
6	1.0	2.0	2.0	1.5	
4	1.0	1.5	1.5	1.5	

45 DEGREE BEND					
PIPE DIA. (INCHES)	DIMENSIONS (FEET)				
	A	B	C	D	
24	2.5	5.5	5.5	4.0	
20	2.0	4.5	4.0	3.0	
18	2.0	4.0	4.0	3.0	
16	2.0	3.5	3.5	2.5	
14	1.5	3.0	3.0	2.0	
12	1.5	3.0	2.5	2.0	
10	1.5	2.5	2.0	2.0	
8	1.0	2.0	2.0	1.5	
6	1.0	1.5	1.5	1.0	
4	1.0	1.0	1.0	1.0	

22.5 DEGREE BEND					
PIPE DIA. (INCHES)	DIMENSIONS (FEET)				
	A	B	C	D	
24	2.0	3.5	3.5	2.5	
20	2.0	3.0	3.0	2.0	
18	1.5	3.0	3.0	1.5	
16	1.5	2.5	2.5	1.5	
14	1.5	2.5	2.5	1.0	
12	1.5	2.0	2.0	1.0	
10	1.0	2.0	2.0	1.0	
8	1.0	1.5	1.5	1.0	
6	1.0	1.5	1.5	1.0	
4	1.0	1.0	1.0	1.0	

11.25 DEGREE BEND					
PIPE DIA. (INCHES)	DIMENSIONS (FEET)				
	A	B	C	D	
24	2.0	3.0	3.0	1.0	
20	1.5	2.5	2.5	1.0	
18	1.5	2.0	2.0	1.0	
16	1.5	2.0	2.0	1.0	
14	1.5	1.5	1.5	1.0	
12	1.5	1.5	1.5	1.0	
10	1.0	1.5	1.5	1.0	
8	1.0	1.0	1.0	1.0	
6	1.0	1.0	1.0	1.0	
4	1.0	1.0	1.0	1.0	

UNBALANCED TEE & PLUG					
PIPE DIA. (INCHES)	DIMENSIONS (FEET)				
	A	B	C	D	
24	3.0	6.0	6.0	3.0	
20	2.5	5.0	5.0	2.5	
18	2.5	4.5	4.5	2.0	
16	2.5	4.0	4.0	2.0	
14	2.0	3.5	3.5	1.5	
12	2.0	3.0	3.0	1.5	
10	1.5	2.5	2.5	1.0	
8	1.5	2.0	2.0	1.0	
6	1.5	1.5	1.5	1.0	
4	1.0	1.0	1.0	1.0	

TEE					
PIPE DIA. (INCHES)	DIMENSIONS (FEET)				
	A	B	C	D	
24	2.5	6.0	6.0	3.5	
20	2.5	5.0	5.0	3.0	
18	1.5	4.5	4.5	3.0	
16	1.5	4.0	4.0	2.5	
14	1.5	3.5	3.5	2.5	
12	1.5	3.0	3.0	2.0	
10	1.5	2.5	2.5	1.5	
8	1.0	2.0	2.0	1.5	
6	1.0	1.5	1.5	1.5	
4	1.0	1.0	1.0	1.0	

**NOTES:**

1. DIMENSIONS OF THRUST BLOCKS ARE BASED ON PRESSURE OF 150 PSI AND SOIL PRESSURE OF 2000 PSF.
2. ADDITIONAL CONCRETE BLOCKING MAY BE REQUIRED FOR PRESSURES GREATER THAN 150 PSI OR IF ALLOWABLE SOIL PRESSURE IS LESS THAN 2000 PSF.
3. CONCRETE IS TO BE CLASS "B" (2500 PSI).
4. CONCRETE THRUST BLOCKS ARE REQUIRED AT ALL TEES, FIRE HYDRANTS, WYES, PLUGS, CAPS, AND BENDS OF 11.25 DEGREES OR MORE.

W-7

Standard Specification and Detail for:

**Thrust Block Detail**

GMD: NA County: Athens-Clarke State: Georgia Date: August, 2019

Drawn by: KFM

Approved by: GJ

Scale: AS-SHOWN

The Unified Government of Athens-Clarke County  
Department of Public Utilities124 E Hancock Ave  
Athens, Georgia 30601

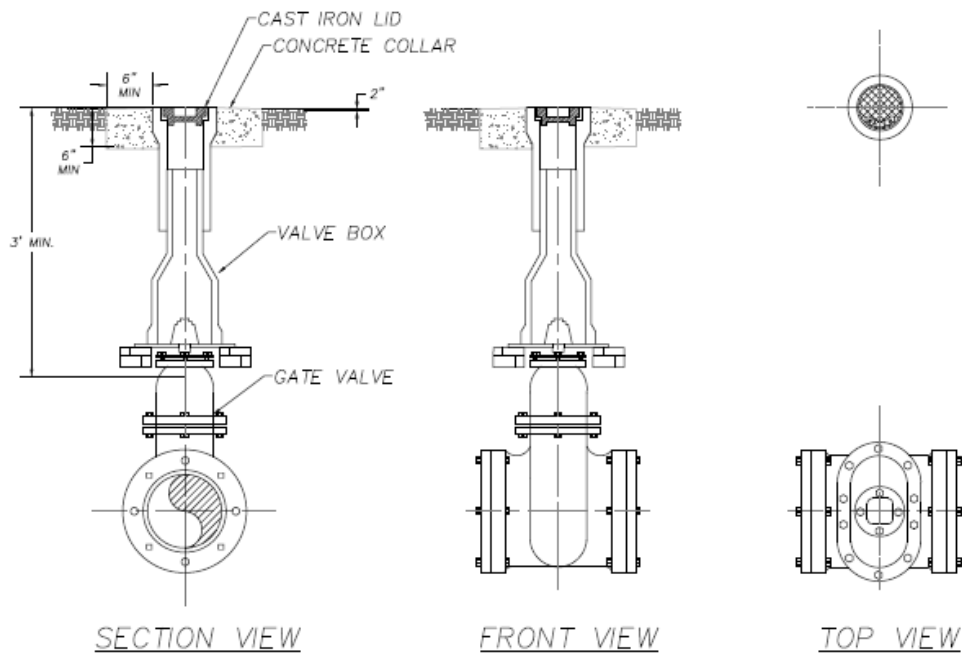
Fax: 706-613-3198

Voice: 706-613-3490



# W-8 Gate Valve Detail

DET-W-08 - GATE VALVE.dwg



## NOTES:

1. 18" TO 24" SCREW ADJUSTABLE
2. 6" SCHEDULE 40 PVC FOR EXTENSION

## Gate Valve Detail

NTS

W-8

Standard Specification and Detail for:

Gate Valve

GMD: NA County: Athens-Clarke State: Georgia Date: August, 2019

Drawn by: KFM

Approved by: GJ

Scale: AS-SHOWN

The Unified Government of Athens-Clarke County  
Department of Public Utilities

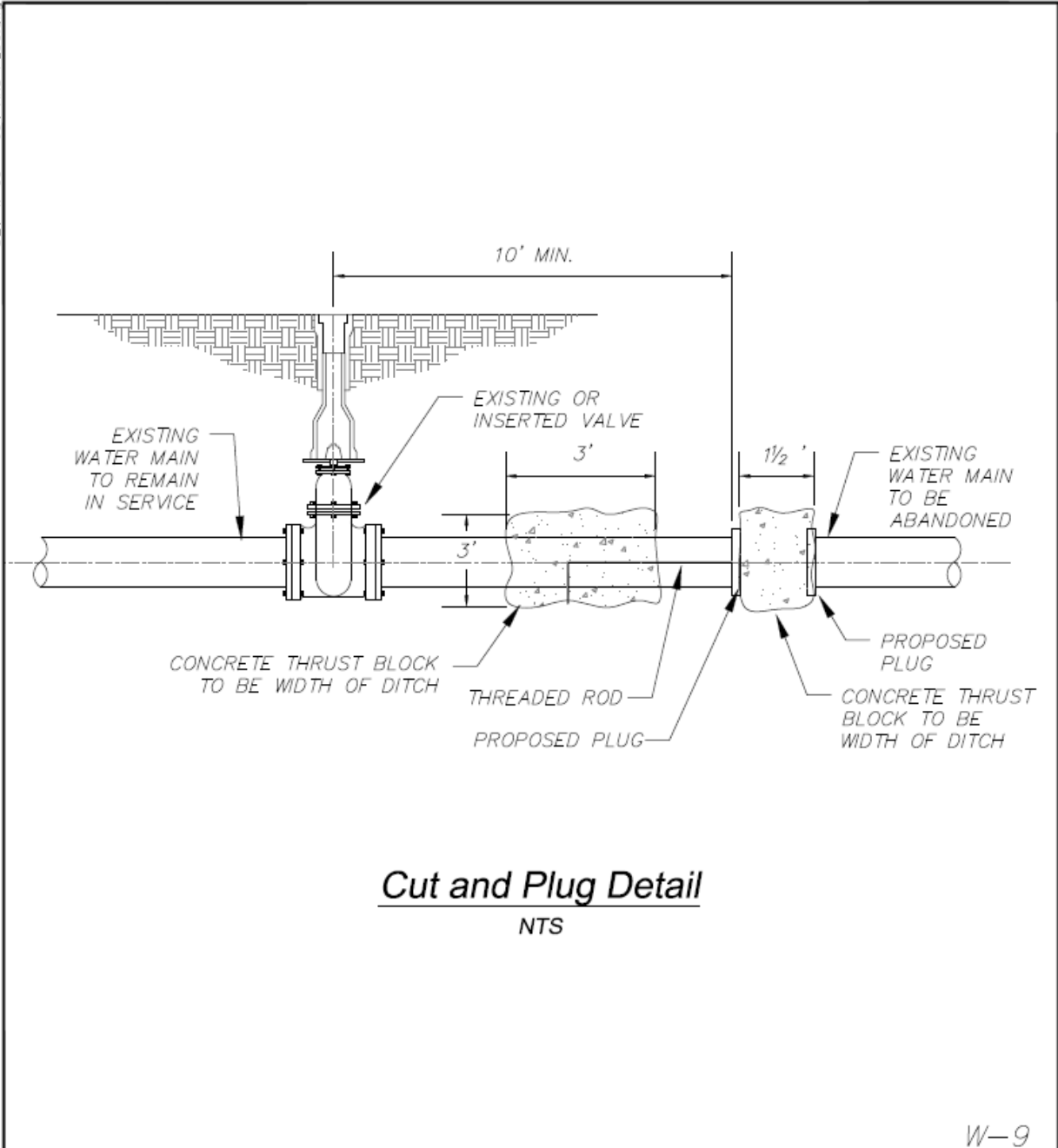
124 E Hancock Ave  
Athens, Georgia 30601

Voice: 706-613-3490



# W-9 Cut and Plug Detail

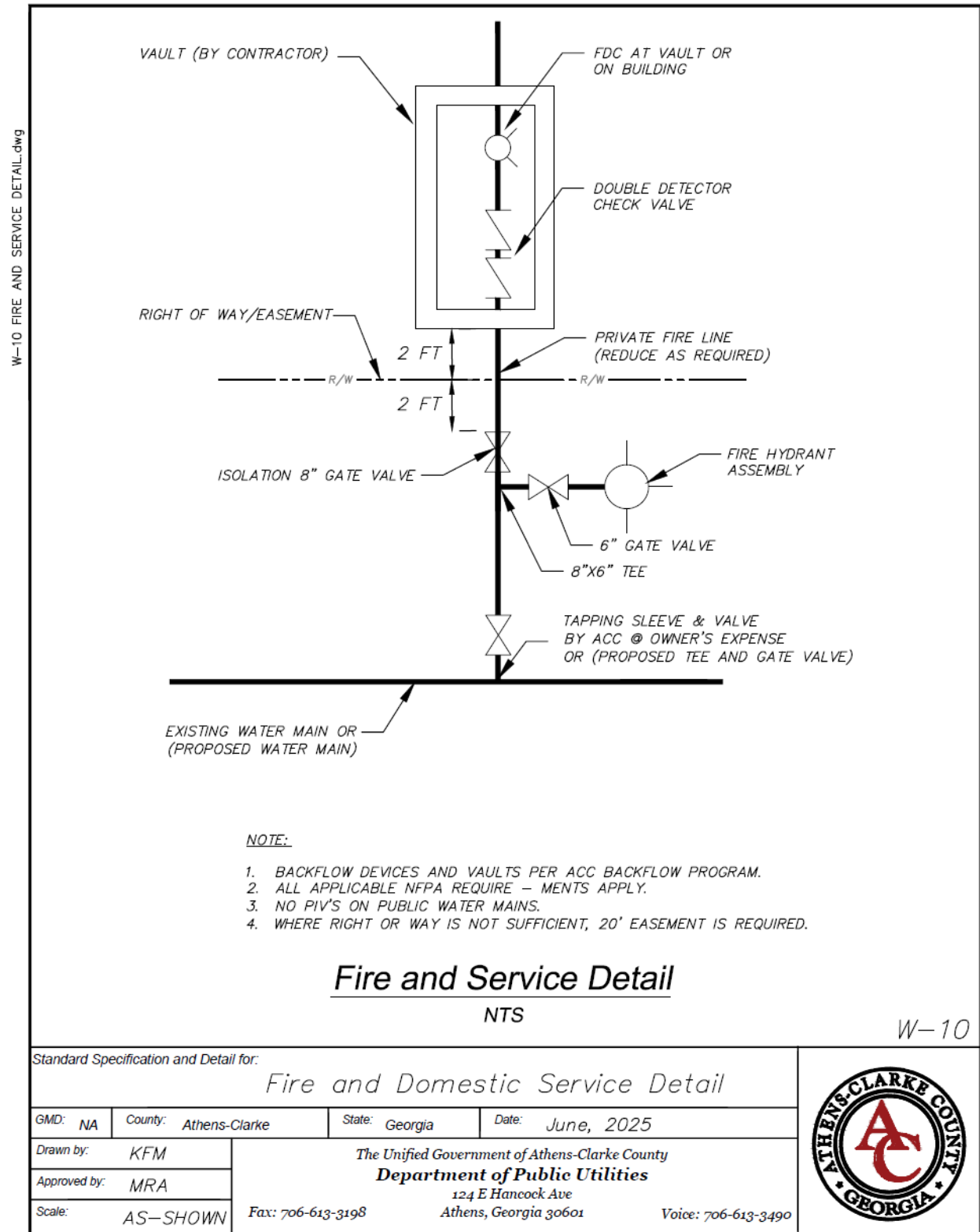
DET-W-09 - CUT AND PLUG.dwg



Standard Specification and Detail for:			
<i>Cut and Plug Detail</i>			
GMD: NA	County: Athens-Clarke	State: Georgia	Date: August, 2019
Drawn by: KFM	The Unified Government of Athens-Clarke County <b>Department of Public Utilities</b> 124 E Hancock Ave Athens, Georgia 30601 Fax: 706-613-3198      Voice: 706-613-3490		
Approved by: GJ			
Scale: AS-SHOWN			

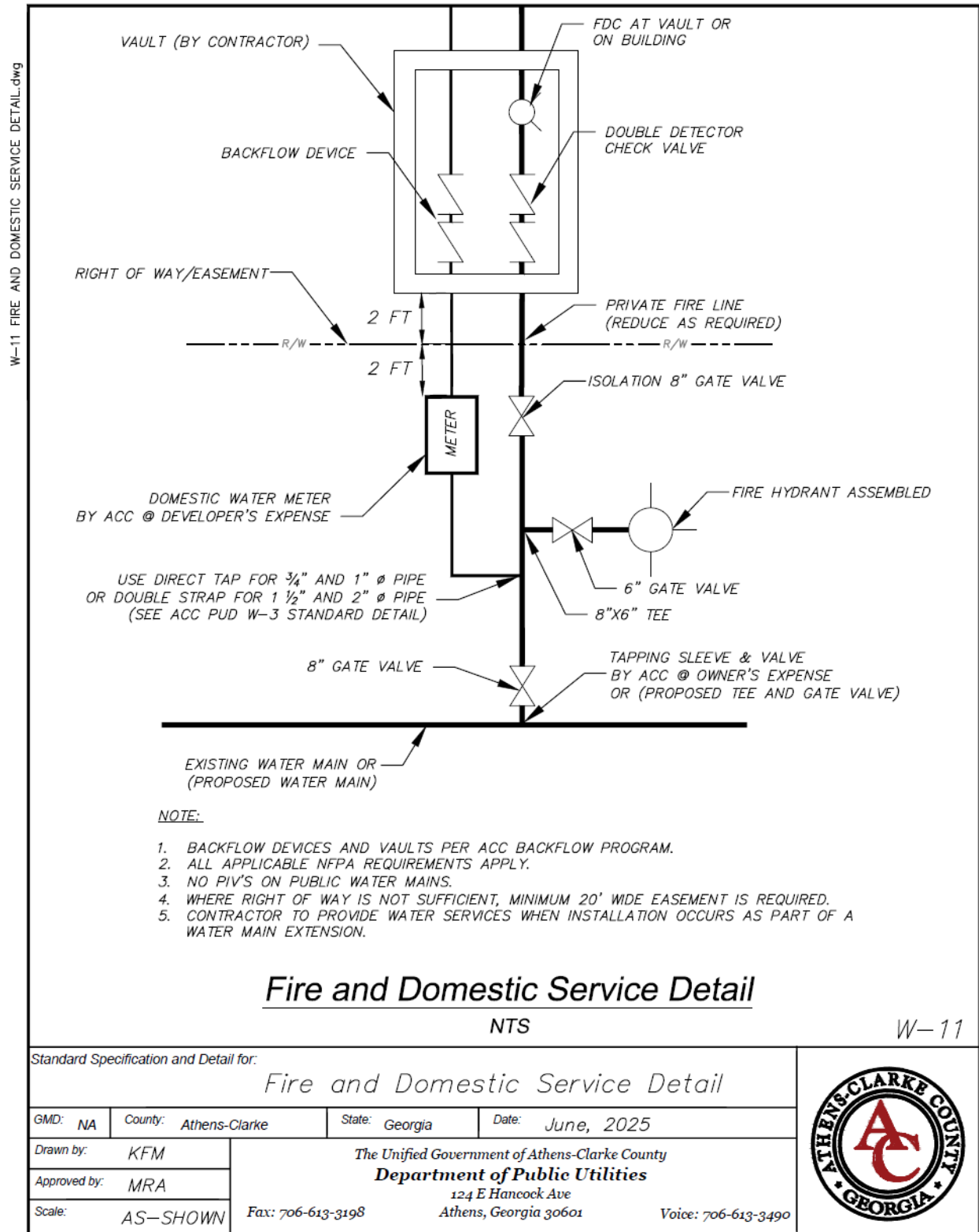


# W-10 Fire and Service Detail

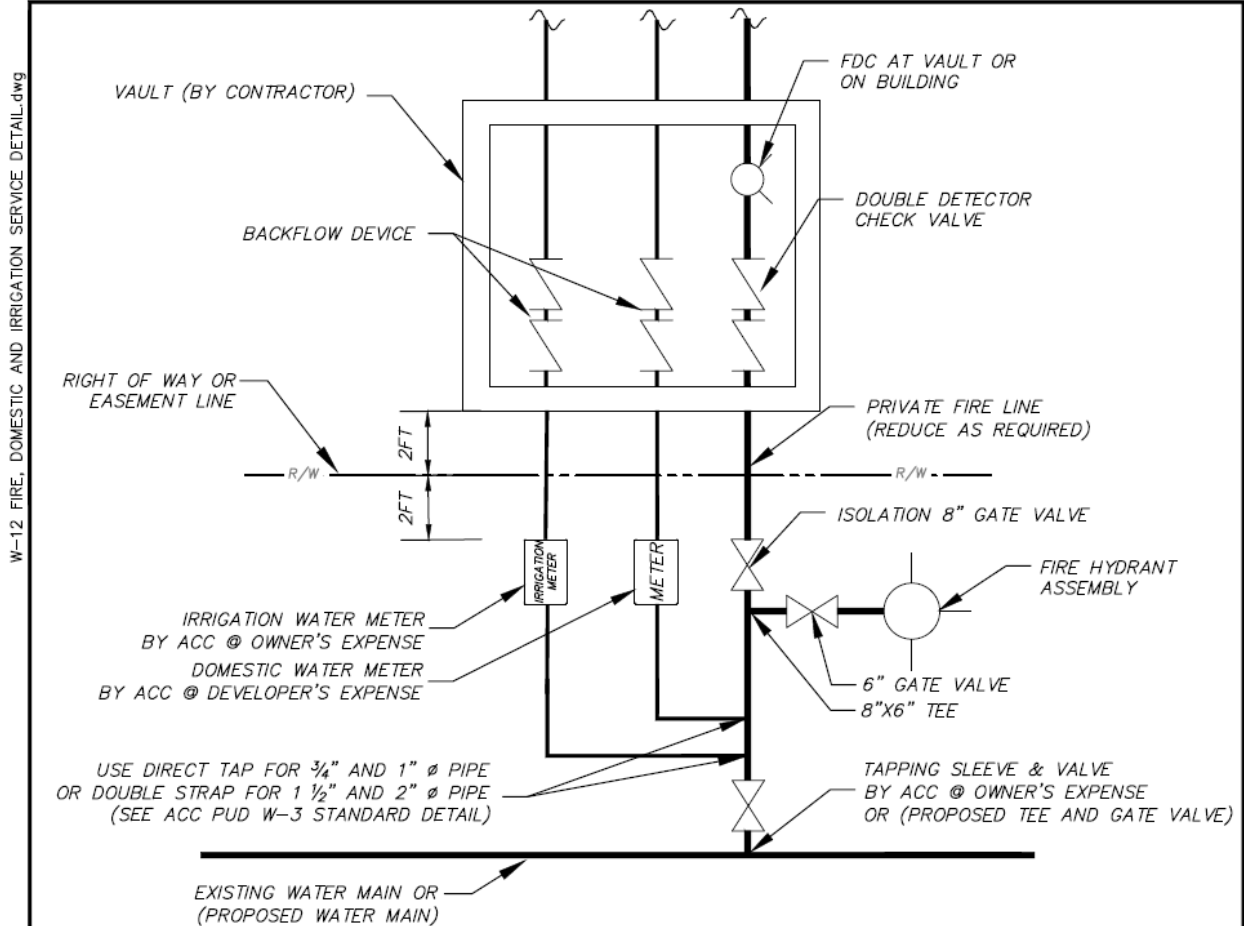




# W-11 Fire and Domestic Service Detail



# W-12 Fire, Domestic & Irrigation Service Detail



## NOTE:

1. BACKFLOW DEVICES AND VAULTS PER ACC BACKFLOW PROGRAM.
2. ALL APPLICABLE NFPA REQUIREMENTS APPLY.
3. NO PIV'S ON PUBLIC WATER MAINS.
4. WHERE RIGHT OF WAY IS NOT SUFFICIENT, MINIMUM 20' WIDE EASEMENT IS REQUIRED.
5. CONTRACTOR TO PROVIDE WATER SERVICES WHEN INSTALLATION OCCURS AS PART OF A WATER MAIN EXTENSION.

## Fire, Domestic & Irrigation Service Detail

NTS

W-12

Standard Specification and Detail for:

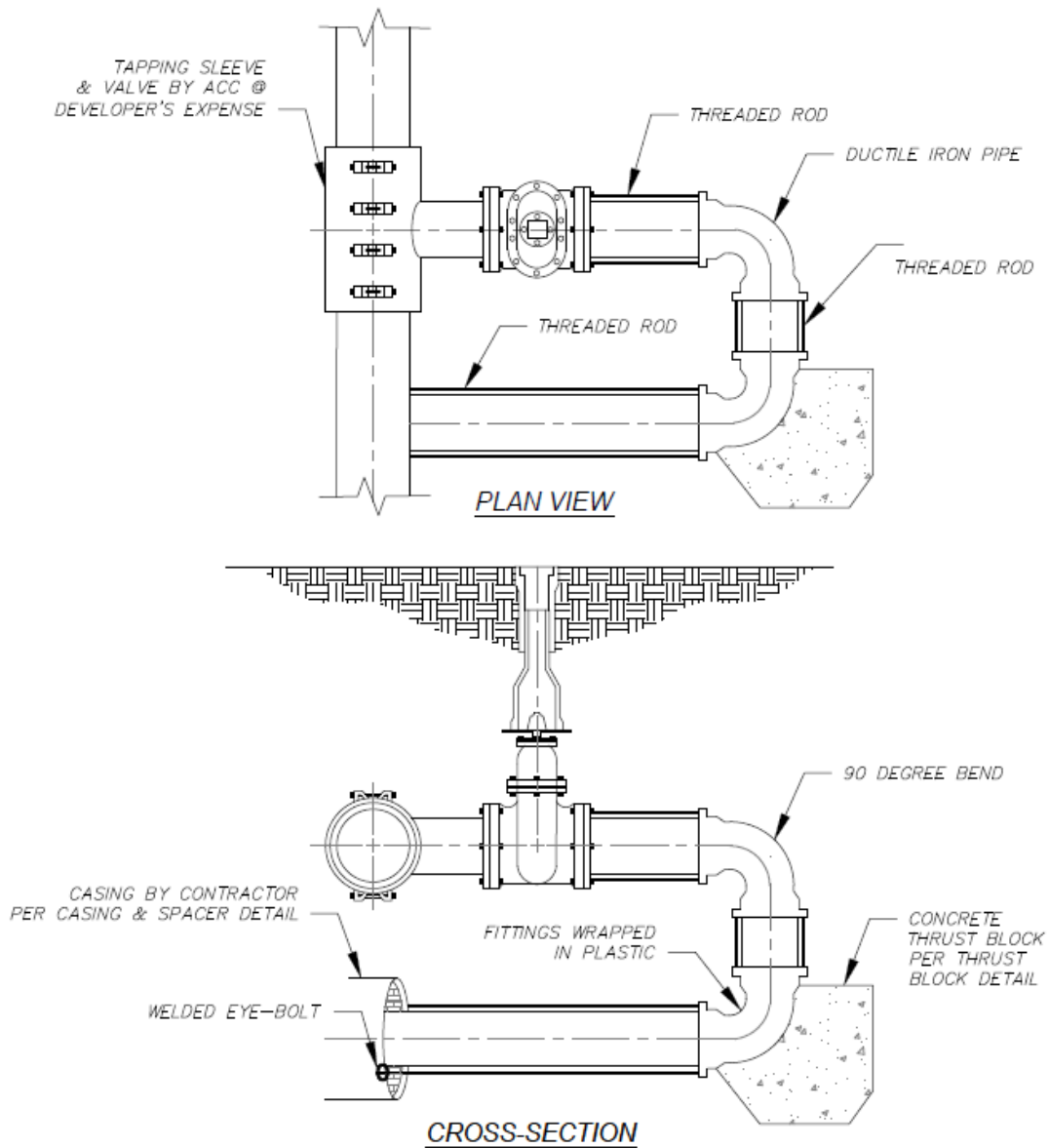
Fire, Domestic and Irrigation Service Detail

GMD: NA	County: Athens-Clarke	State: Georgia	Date: June, 2025
Drawn by: KFM	The Unified Government of Athens-Clarke County <b>Department of Public Utilities</b> 124 E Hancock Ave Athens, Georgia 30601 Fax: 706-613-3198      Voice: 706-613-3490		
Approved by: MRA			
Scale: AS-SHOWN			



# W-13 Back Tap Installation Detail

DET-W-13 - BACK TAP INSTALLATION DETAIL.dwg



## Back Tap Installation Detail

NTS

W-13

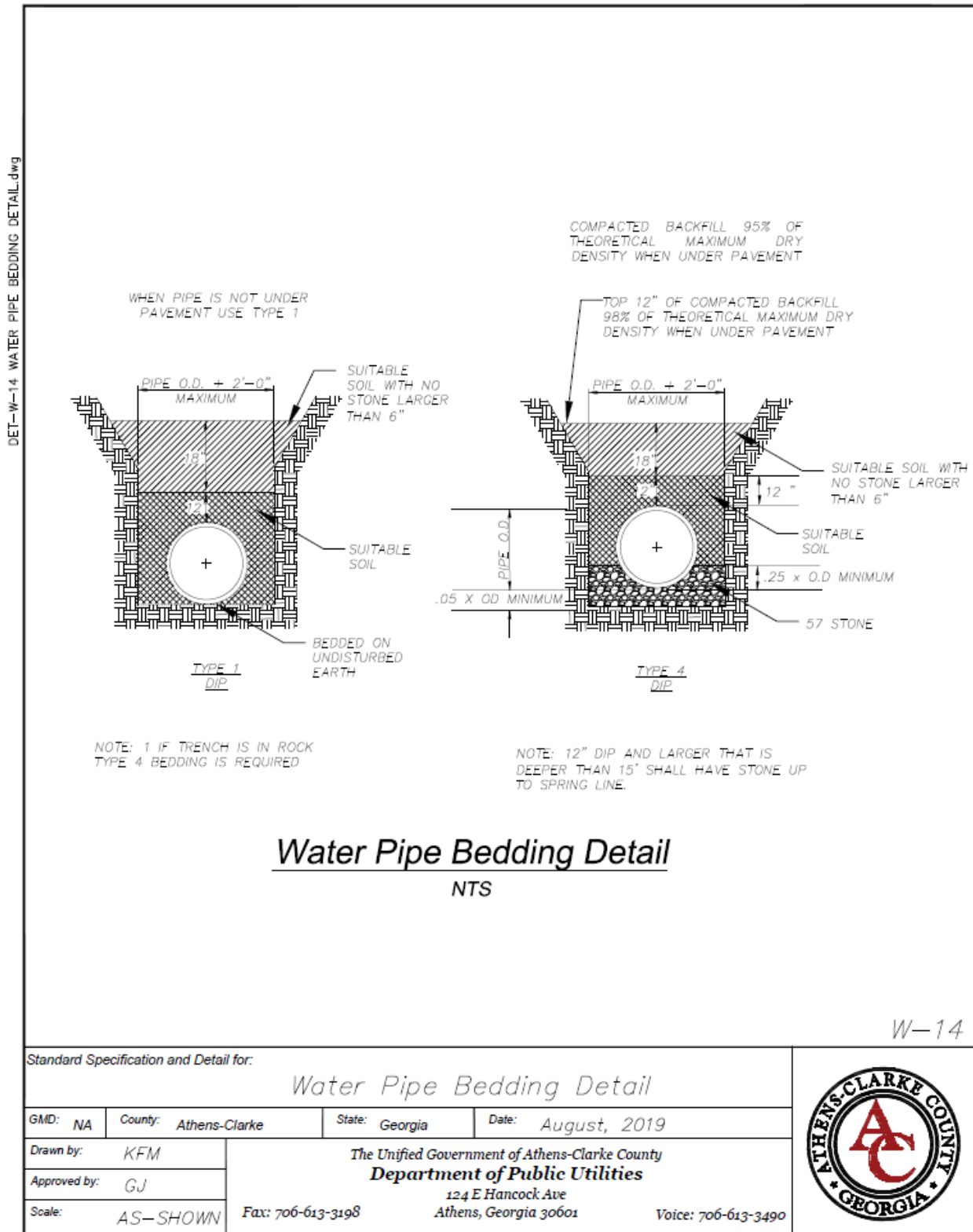
Standard Specification and Detail for:

Back Tap Installation Detail

GMD: NA	County: Athens-Clarke	State: Georgia	Date: August, 2019
Drawn by: KFM	The Unified Government of Athens-Clarke County <b>Department of Public Utilities</b> 124 E Hancock Ave Athens, Georgia 30601 Fax: 706-613-3198      Voice: 706-613-3490		
Approved by: GJ			
Scale: AS-SHOWN			

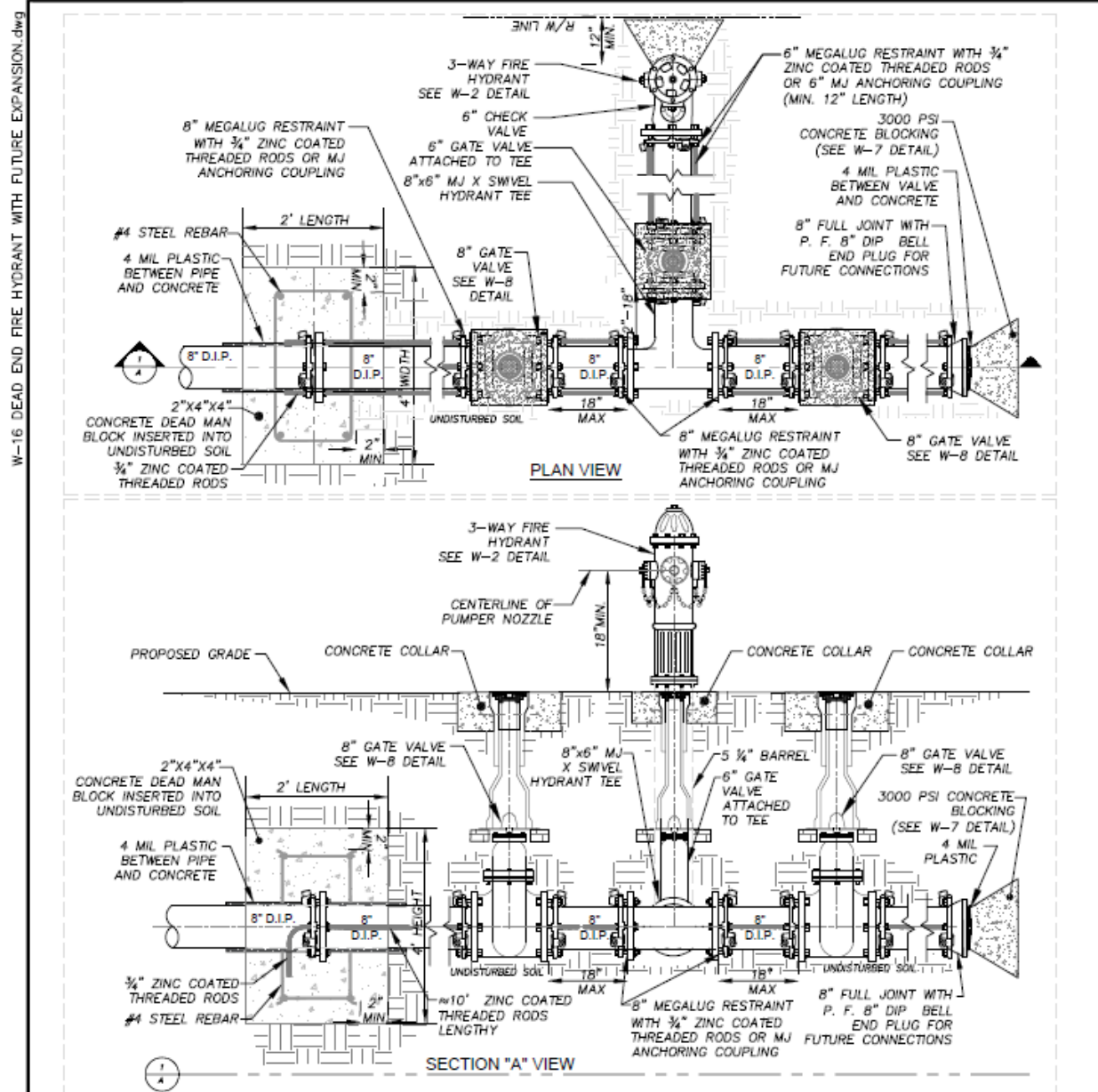


# W-14 Water Pipe Bedding Detail





# W-16 Dead End Fire Hydrant prepared for Future Extensions Detail.



Standard Specification and Detail for:

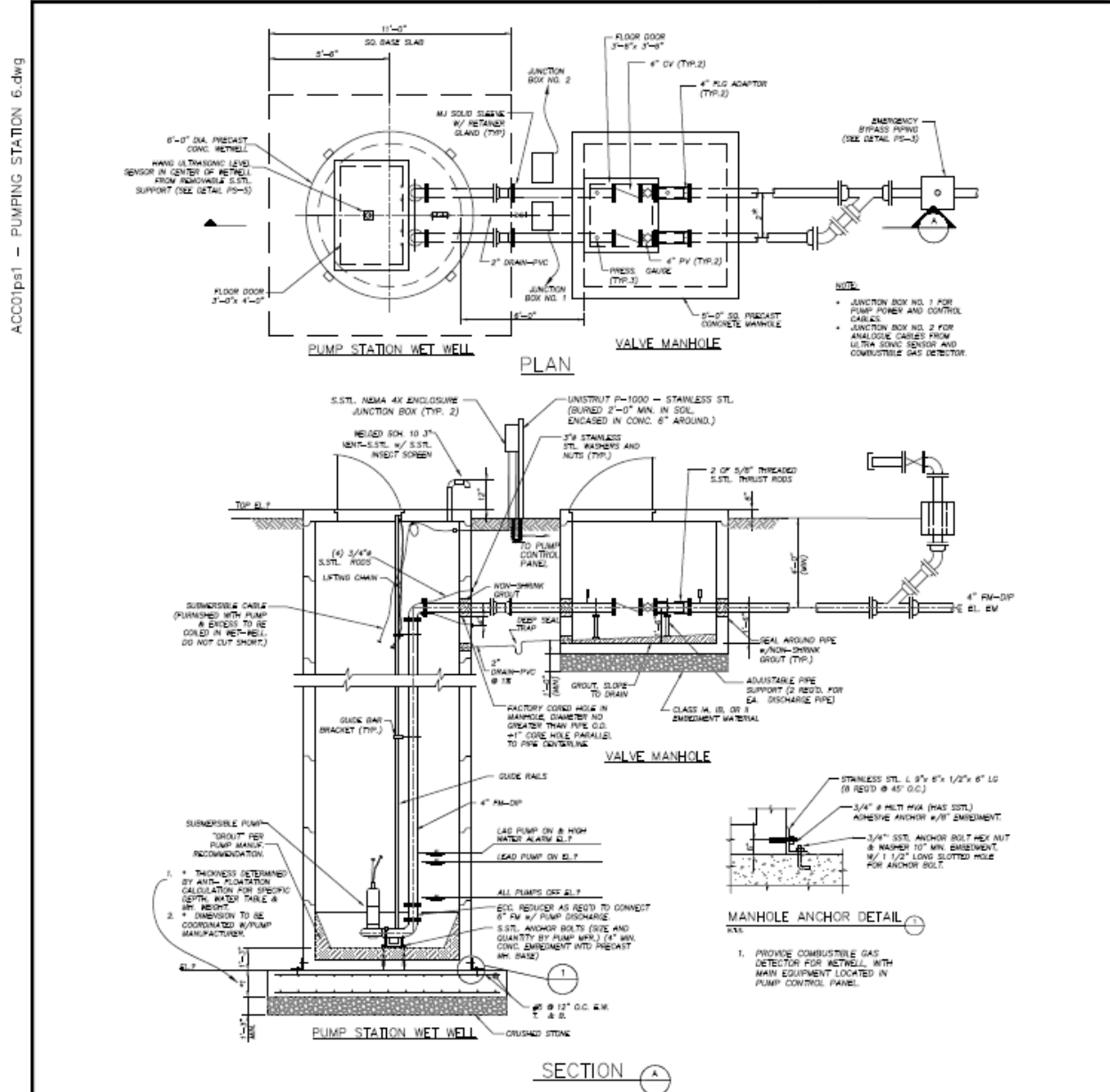
Dead End Fire Hydrant w/ Tee and Tee, Gate Valve for Future Extension

GMD: NA	County: Athens-Clarke	State: Georgia	Date: November, 2022
Drawn by: KFM	The Unified Government of Athens-Clarke County <b>Department of Public Utilities</b> 124 E Hancock Ave Athens, Georgia 30601 Fax: 706-613-3198      Voice: 706-613-3490		
Approved by: MRA			
Scale: AS-SHOWN			





## PS-1 Pumping Station (6' diameter wetwell)



## Pumping Station (6' diameter wetwell)

NTS

PS-1

Standard Specification and Detail for:

Pumping Station (6' diameter wetwell)

GMD: NA County: Athens-Clarke State: Georgia Date: August, 2019

Drawn by: KFM

Approved by: GH

Scale: AS-SHOWN

The Unified Government of Athens-Clarke County

Department of Public Utilities

124 E. Hancock Ave

Athens, Georgia 30601

Fax: 706-613-3198

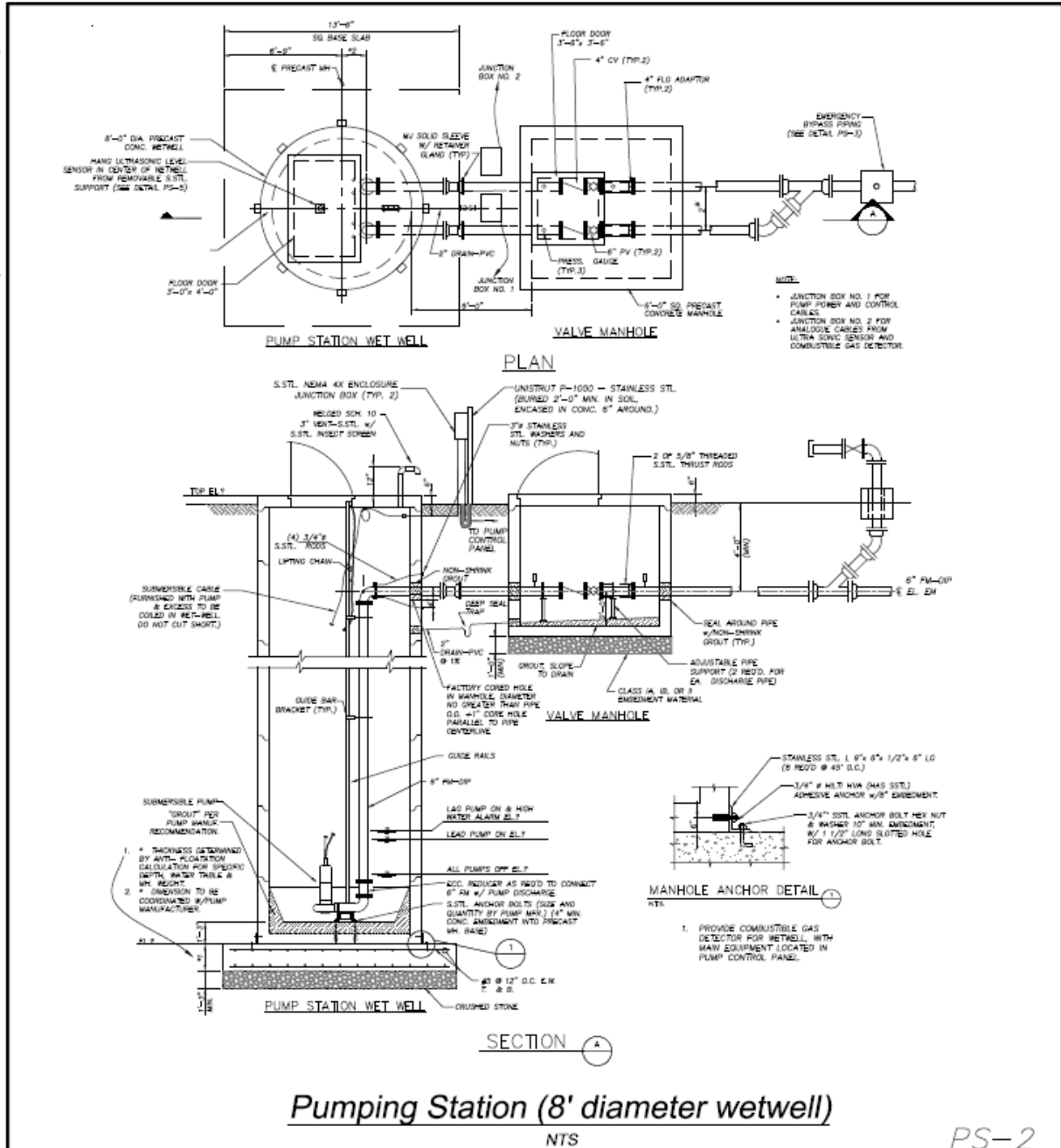
Voice: 706-613-3490





# PS-2 Pumping Station (8' diameter wetwell)

AC001ps2 - PUMPING STATION 8.dwg



## Pumping Station (8' diameter wetwell)

NTS

PS-2

Standard Specification and Detail for:

Pumping Station (8' diameter wetwell)

GMD: NA	County: Athens-Clarke	State: Georgia	Date: August, 2019
Drawn by: KFM	The Unified Government of Athens-Clarke County Department of Public Utilities 124 E Hancock Ave Athens, Georgia 30601 Fax: 706-613-3198 Voice: 706-613-3490		
Approved by: GJ			
Scale: AS-SHOWN			

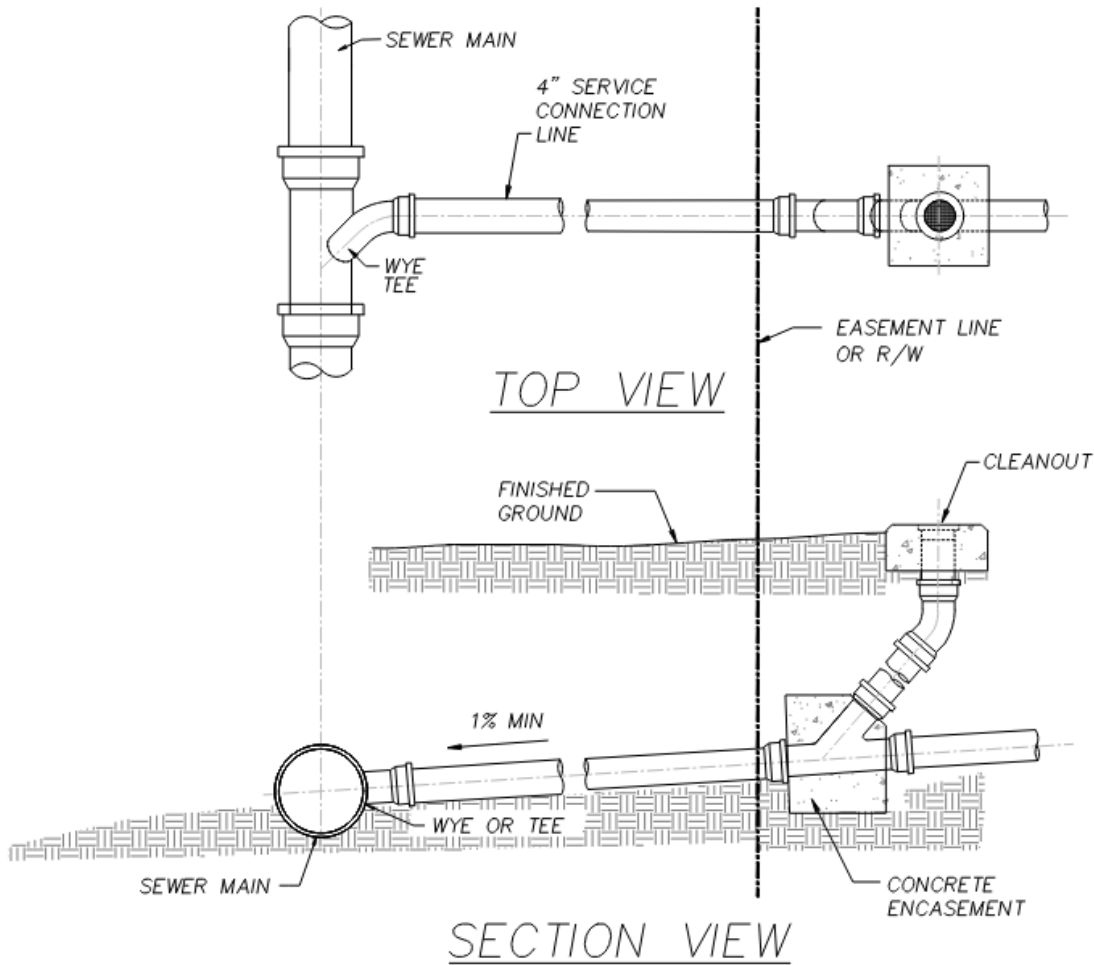


## SS-1 Service Connection on New Sewers

SS-1 SERVICE CONNECTION IN NEW SEWER.dwg

**NOTES:**

1. CONNECTION TO NEW SEWER SHALL BE WITH TEE WYE WITH SDR 26 PVC.
2. NO TEES ON SEWERS LARGER THAN 12 INCHES IN DIAMETER
3. SERVICE PIPE MATERIAL SHALL BE SCHEDULE SDR 26 WHEN CONNECTING TO PVC.
4. SERVICE PIPE MATERIAL SHALL BE DUCTILE IRON WHEN CONNECTING TO DUCTILE IRON.
5. CONNECTION TO NEW DIP SEWER SHALL BE WITH 8"X4" MJ TEE.



### Service Connection On New Sewers

NTS

SS-1

Standard Specification and Detail for:

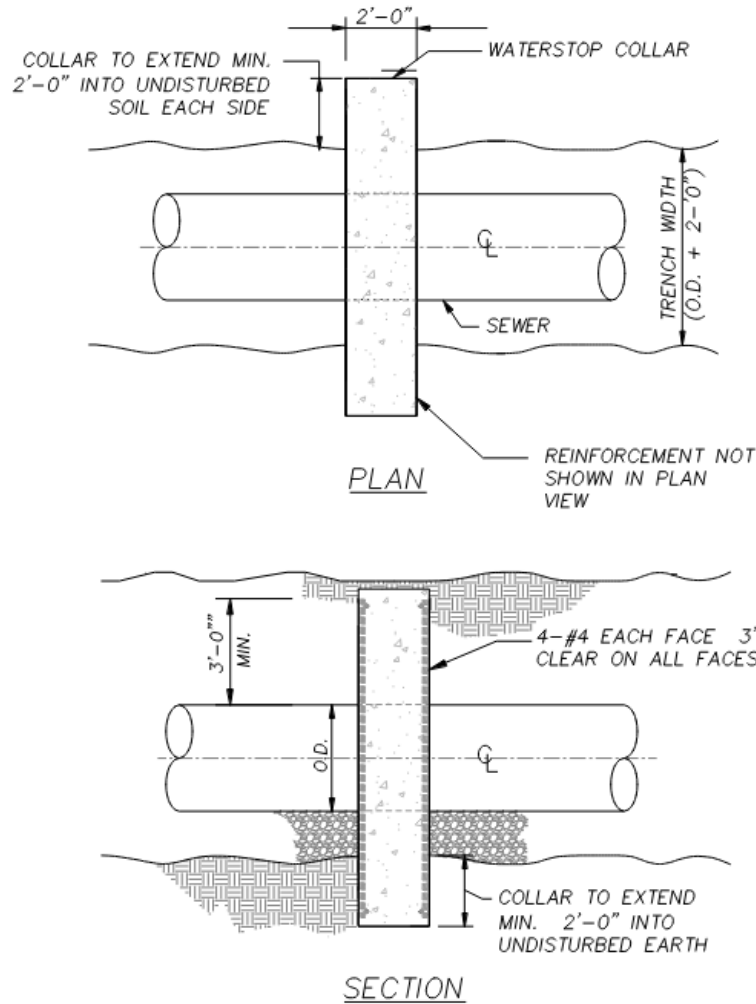
#### Service Connection On New Sewers

GMD: NA	County: Athens-Clarke	State: Georgia	Date: June, 2025
Drawn by: KFM	The Unified Government of Athens-Clarke County <b>Department of Public Utilities</b> 124 E Hancock Ave Athens, Georgia 30601 Fax: 706-613-3198      Voice: 706-613-3490		
Approved by: MRA			
Scale: AS-SHOWN			



## SS-2 Water Stop Collar

SS-2 WATER STOP COLLAR.dwg



### Water Stop Collar

SS-2

Standard Specification and Detail for:

Water Stop Collar

GMD: NA County: Athens-Clarke State: Georgia Date: August, 2019

Drawn by: KFM

Approved by: GJ

Scale: AS-SHOWN

The Unified Government of Athens-Clarke County

**Department of Public Utilities**

124 E Hancock Ave

Athens, Georgia 30601

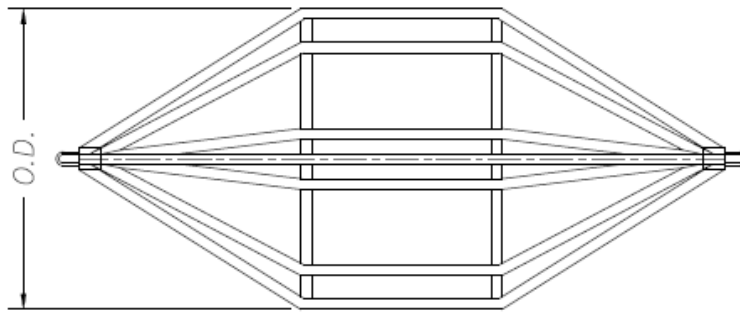
Fax: 706-613-3198

Voice: 706-613-3490

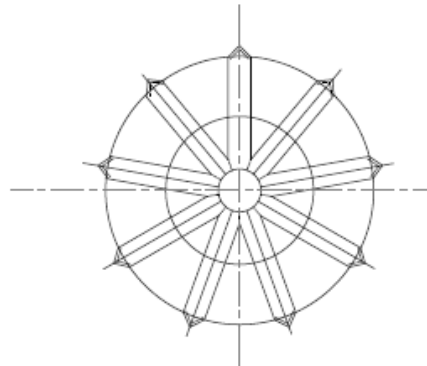


## SS-3 Deflection Test Mandrel

SS-3 - DEFLECTION TEST MANDREL.dwg



SIDE OR TOP VIEW



END VIEW

SEWER SIZE	MINIMUM MANDREL DIAMETER
8	7.41
10	9.31
12	11.21
15	14.06

EQUAL TO 95% OF BASE INSIDE DIAMETER

### Deflection Test Mandrel

SS-3

Standard Specification and Detail for:

*Deflection Test Mandrel*

GMD: NA	County: Athens-Clarke	State: Georgia	Date: August, 2019
Drawn by: KFM	The Unified Government of Athens-Clarke County <b>Department of Public Utilities</b> 124 E Hancock Ave Athens, Georgia 30601		
Approved by: GJ			
Scale: AS-SHOWN			

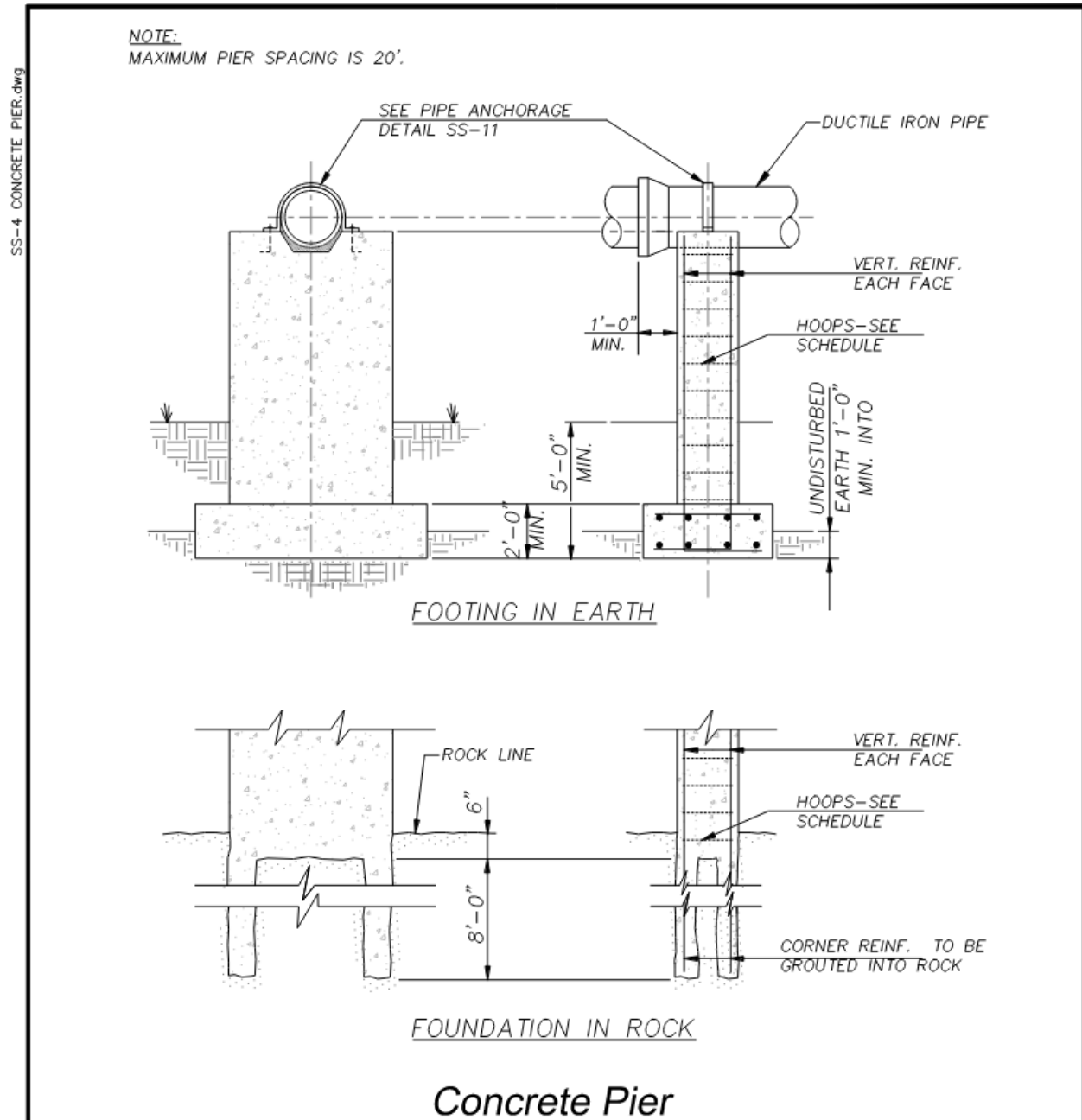
Fax: 706-613-3198

Athens, Georgia 30601

Voice: 706-613-3490



# SS-4 Concrete Pier



SS-4

Standard Specification and Detail for:

Concrete Pier

GMD: NA County: Athens-Clarke State: Georgia Date: August, 2019

Drawn by: KFM

Approved by: GJ

Scale: AS-SHOWN

The Unified Government of Athens-Clarke County  
Department of Public Utilities

124 E Hancock Ave

Athens, Georgia 30601

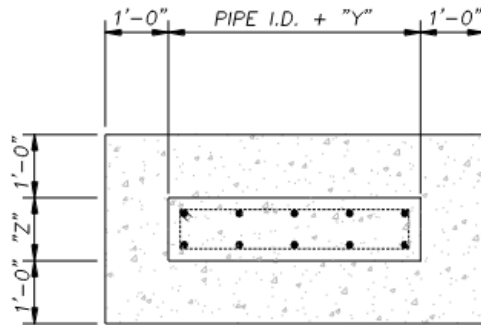
Fax: 706-613-3198

Voice: 706-613-3490



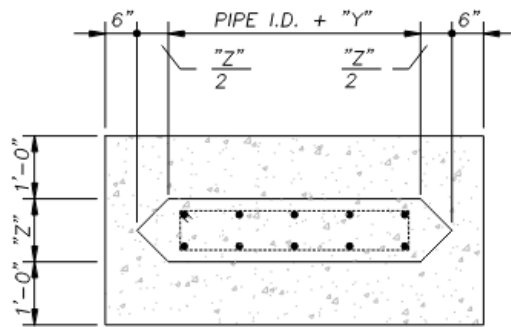
## SS-5 Concrete Pier Footing

SS-5 CONCRETE PIER FOOTING.dwg



PLAN - OVERLAND

PIPE I.D.	"Y"	"Z"	VERT. REINF. @12" O.C.	HOOPS @12" O.C.
8"-16"	24"	12"	#5	#3



PLAN - IN STREAM

**NOTES:**

1. FOOTING REINF. SAME AS VERT. REINF. EA. WAY TOP & BOTTOM.
2. WHEN BASE IS IN ROCK OMIT FOOTING & GROUT VERTICAL CORNER BARS 8' INTO ROCK.

### Concrete Pier Footing

NTS

SS-5

Standard Specification and Detail for:

### Concrete Pier Footing

GMD: NA County: Athens-Clarke State: Georgia Date: August, 2019

Drawn by: KFM

Approved by: GJ

Scale: AS-SHOWN

The Unified Government of Athens-Clarke County

**Department of Public Utilities**

124 E Hancock Ave

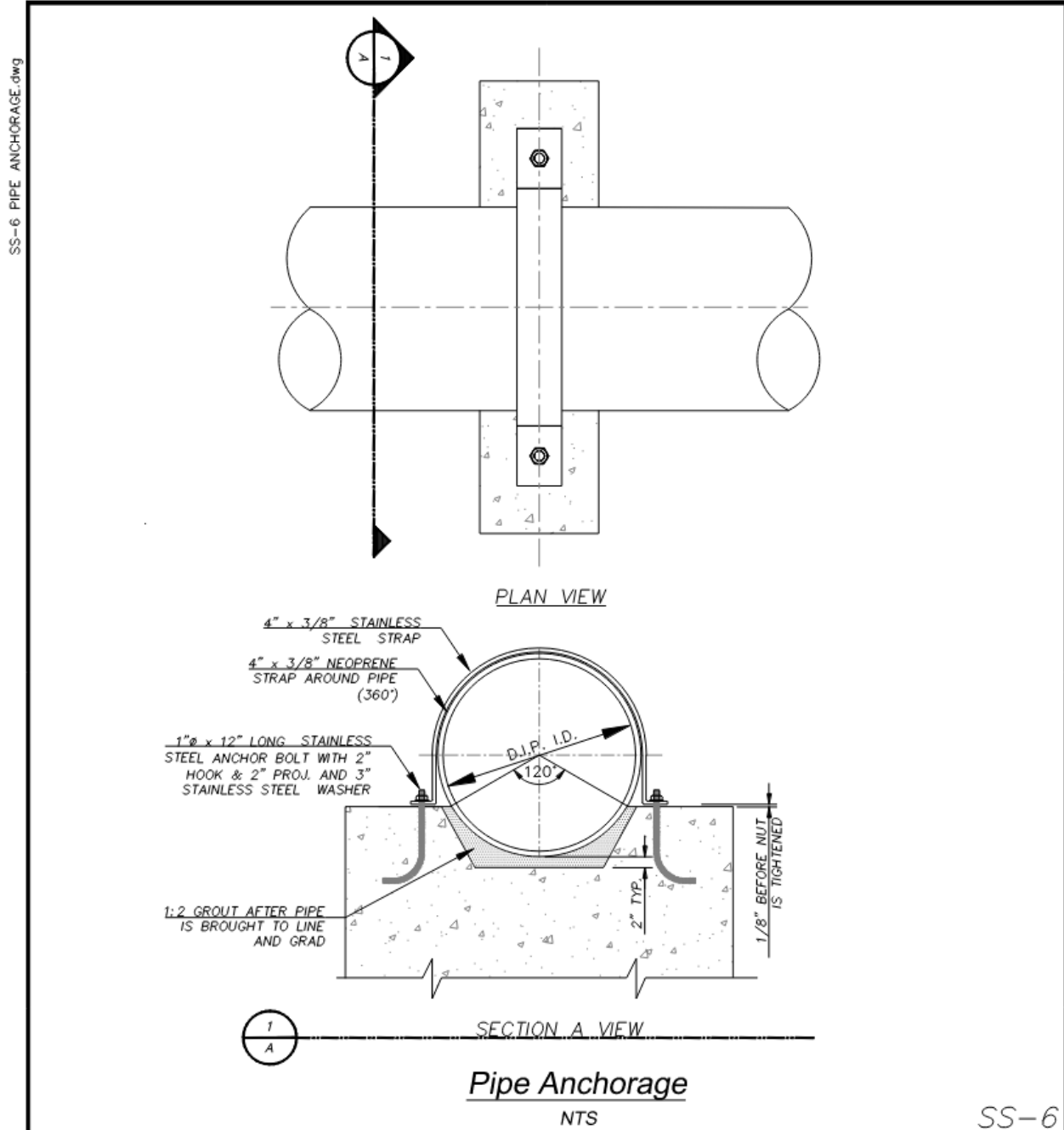
Athens, Georgia 30601

Fax: 706-613-3198

Voice: 706-613-3490



# SS-6 Pipe Anchorage



SS-6

Standard Specification and Detail for:

*Pipe Anchorage*

GMD: NA County: Athens-Clarke State: Georgia Date: August, 2025

Drawn by: KFM

Approved by: MRA

Scale: AS-SHOWN

The Unified Government of Athens-Clarke County

**Department of Public Utilities**

124 E Hancock Ave

Athens, Georgia 30601

Fax: 706-613-3198

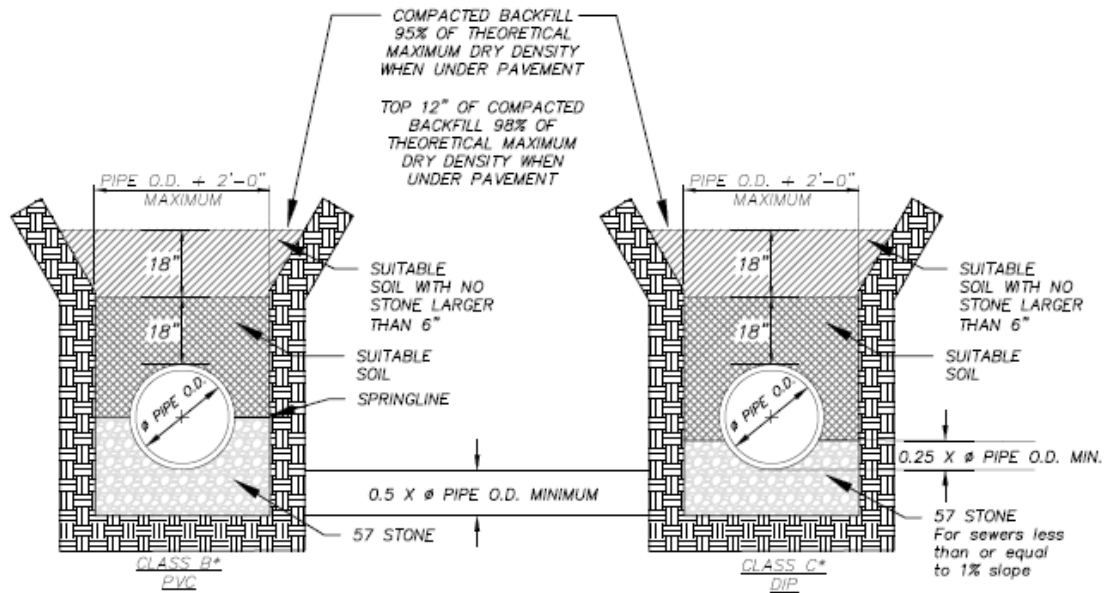
Voice: 706-613-3490





# SS-7 Sanitary Sewer Pipe Bedding Detail

SS-7 SANITARY SEWER PIPE BEDDING DETAIL.dwg



NOTE: FOR TRENCHES IN ROCK MINIMUM  
TRENCH WIDTH IS 3'-0" AND MINIMUM  
BEDDING IS 6".

\*TYPE 3 MODIFIED (ACC 1990)

NOTE: 12" DIP DEEPER THAN 15' SHALL  
HAVE STONE UP TO SPRING LINE.

\*TYPE 3 MODIFIED (ACC 1990)  
\*TYPE 4 MODIFIED DIPRA

NOTE: IF THE TRENCH IS EXCAVATED TO EXCESSIVE WIDTH, BEDDING  
AND HAUNCHING WITH NO. 57 CRUSHED STONE IS REQUIRED TO 12  
INCHES ABOVE THE TOP OF PIPE (PVC) AND TO THE CROWN (DIP)

\*PLUS ANY UNDERCUT

## Sanitary Sewer Bedding Detail

NTS

SS-7

Standard Specification and Detail for:

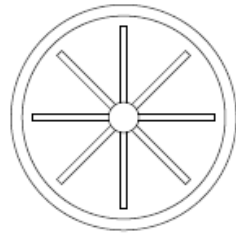
### Sanitary Sewer Pipe Bedding Detail

GMD: NA	County: Athens-Clarke	State: Georgia	Date: August, 2019
Drawn by: KFM	The Unified Government of Athens-Clarke County Department of Public Utilities 124 E Hancock Ave Athens, Georgia 30601 Fax: 706-613-3198 Voice: 706-613-3490		
Approved by: GJ			
Scale: AS-SHOWN			

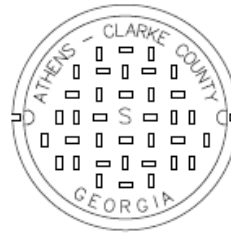


# MH-1 Frame and Cover Manhole Detail

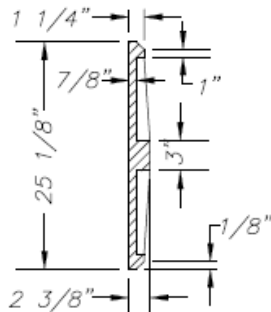
MH1 FRAME AND COVER.dwg



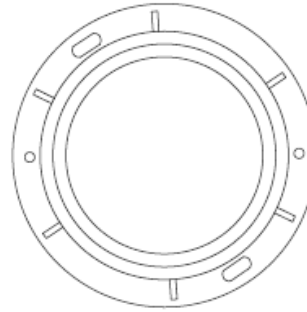
COVER BACK



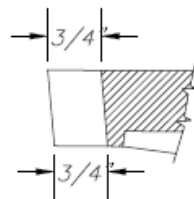
COVER FACE



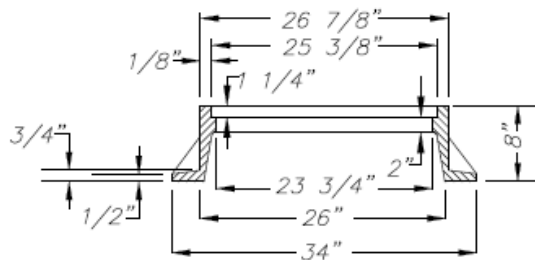
COVER SECTION



FRAME PLAN



(2) TYPE ONE PICKSLOTS  
PICKSLOT DETAIL



FRAME SECTION

## Frame and Cover Manhole Detail

NTS

MH-1

Standard Specification and Detail for:

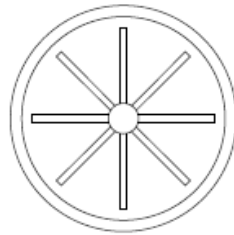
Frame and Cover Manhole Detail

GMD: NA	County: Athens-Clarke	State: Georgia	Date: August, 2019
Drawn by: KFM	The Unified Government of Athens-Clarke County Department of Public Utilities 124 E Hancock Ave Athens, Georgia 30601 Fax: 706-613-3198      Voice: 706-613-3490		
Approved by: GJ			
Scale: AS-SHOWN			



## MH-2 Frame and Cover Private Manhole Detail

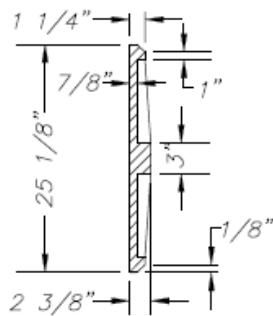
MH-2- PRIVATE FRAME AND COVER.dwg



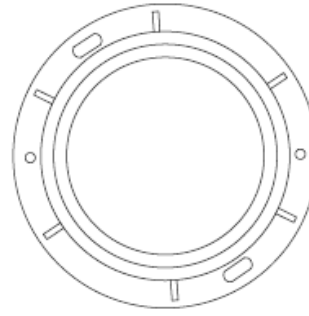
COVER BACK



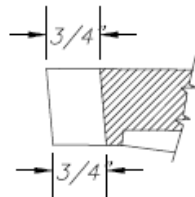
COVER FACE



COVER SECTION

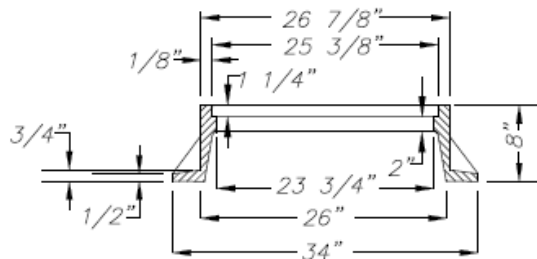


FRAME PLAN



(2) TYPE ONE PICKSLOTS

PICKSLOT DETAIL



FRAME SECTION

### Frame and Cover Private Manhole Detail

NTS

MH-2

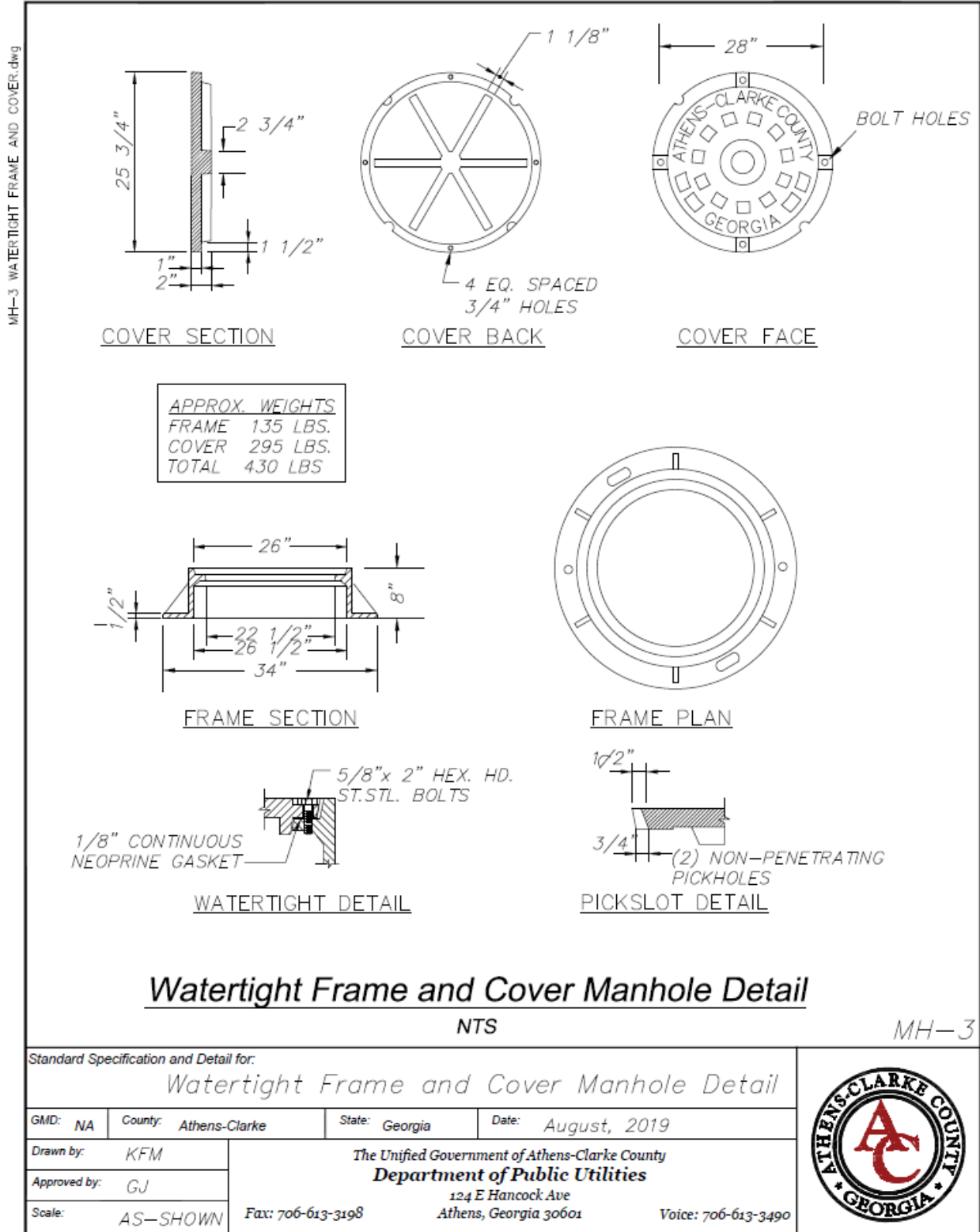
Standard Specification and Detail for:

*Frame and Cover Private Manhole Detail*

GMD: NA	County: Athens-Clarke	State: Georgia	Date: August, 2019
Drawn by: KFM	The Unified Government of Athens-Clarke County <b>Department of Public Utilities</b> 124 E Hancock Ave Athens, Georgia 30601 Fax: 706-613-3198      Voice: 706-613-3490		
Approved by: GJ			
Scale: AS-SHOWN			

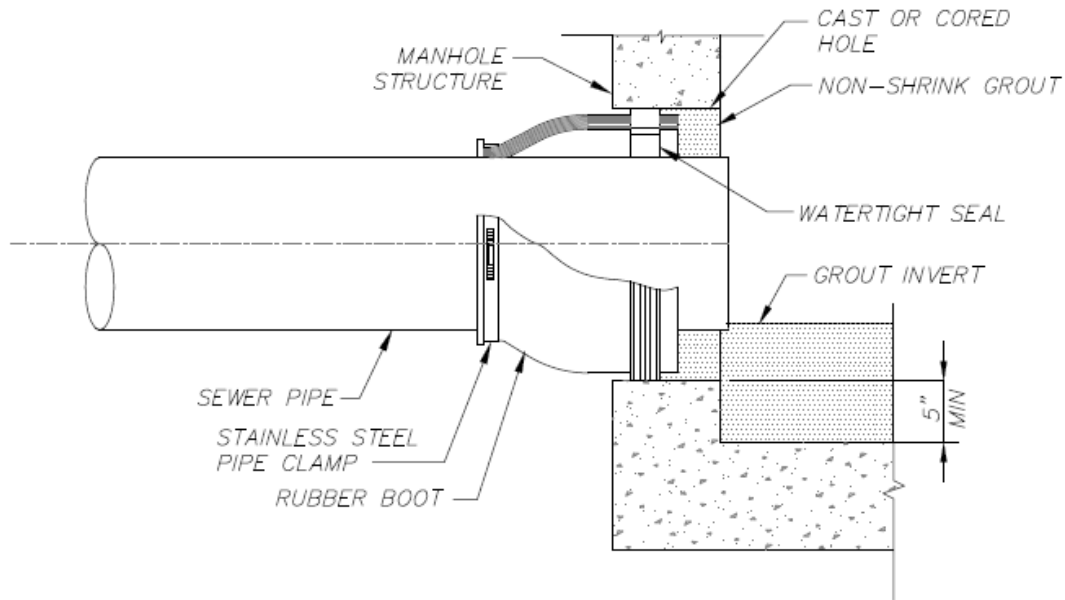


# MH-3 Watertight Frame and Cover Manhole Detail



## MH-4 Boot Connection

ACC-MH-4- BOOT CONNECTION.dwg



## Boot Connection

NTS

MH-4

Standard Specification and Detail for:

*Boot Connection*

GMD: NA County: Athens-Clarke State: Georgia Date: August, 2019

Drawn by: KFM

Approved by: GJ

Scale: AS-SHOWN

The Unified Government of Athens-Clarke County  
Department of Public Utilities

124 E Hancock Ave  
Athens, Georgia 30601

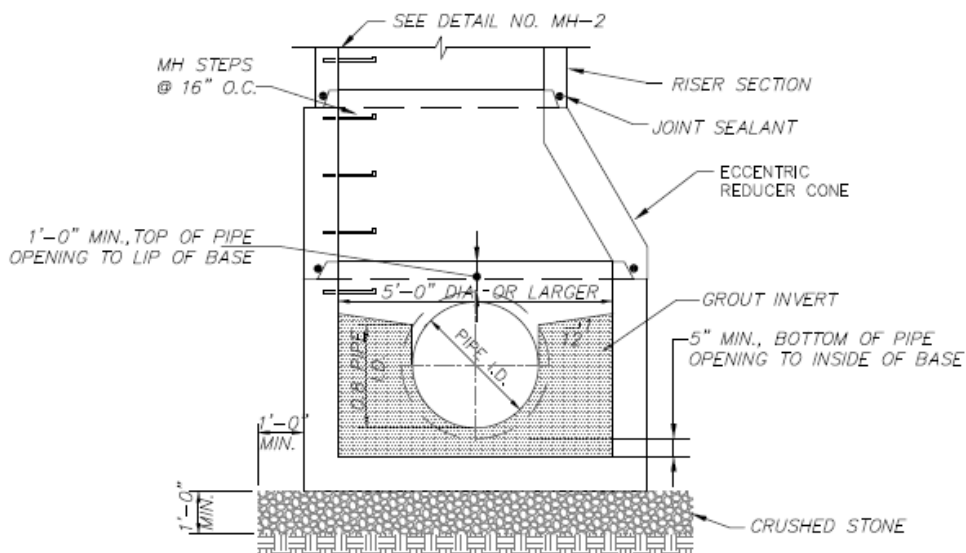
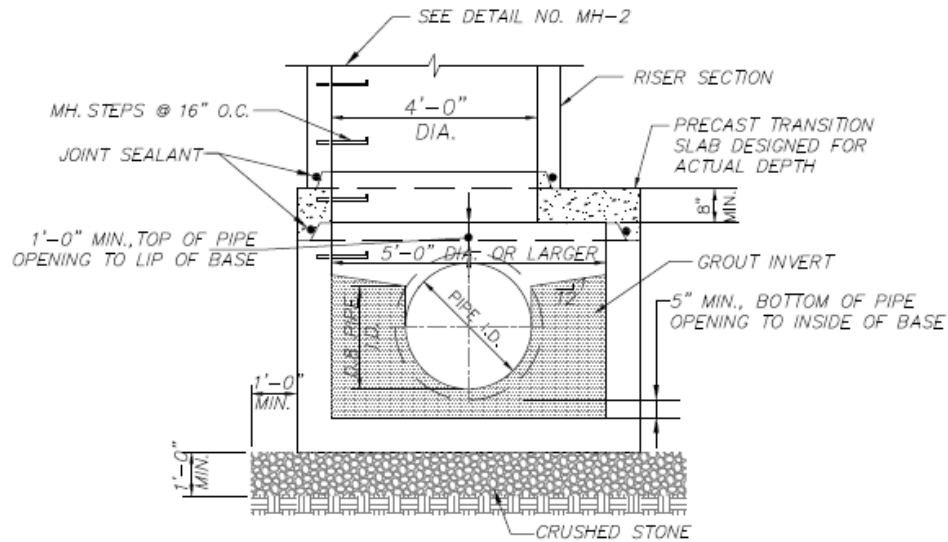
Fax: 706-613-3198

Voice: 706-613-3490



# MH-5 Large Diameter Manhole Base

MH5- LARGE DIAMETER MANHOLE BASE.dwg



## Large Diameter Manhole Base

NTS

MH-5

Standard Specification and Detail for:

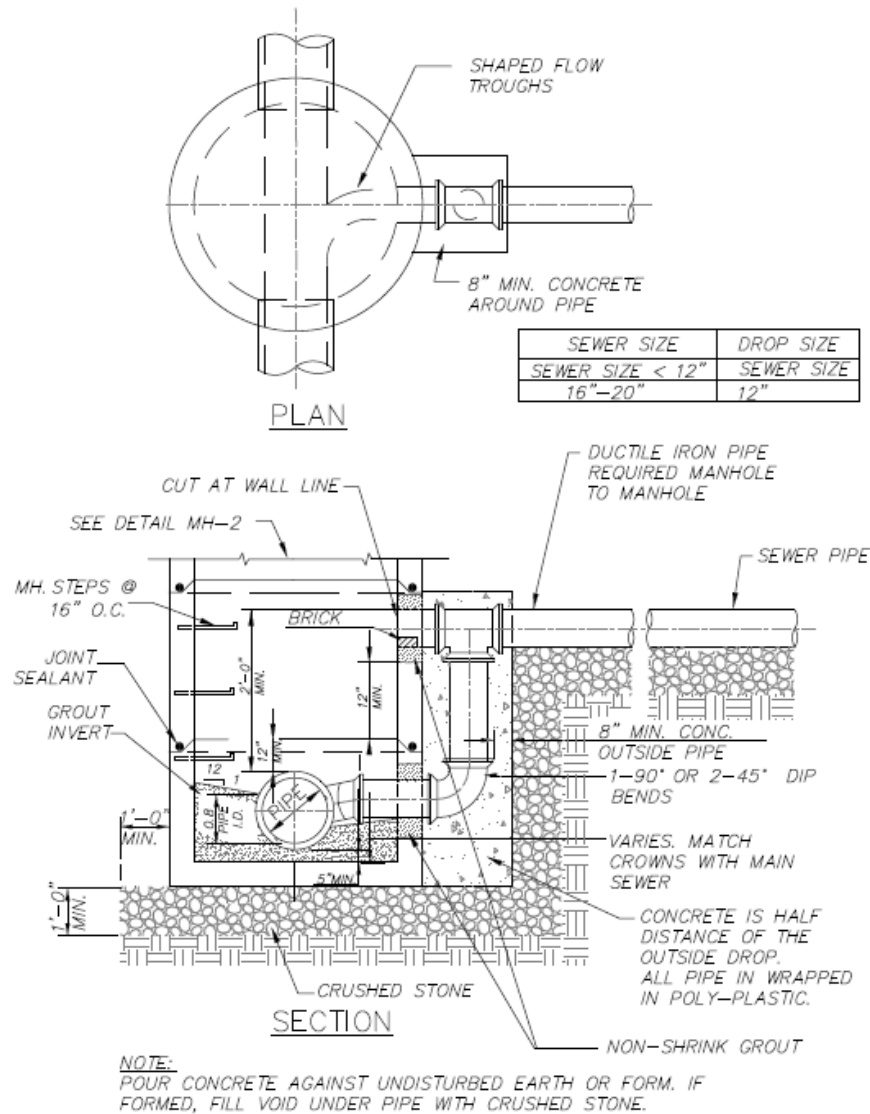
## Large Diameter Manhole Base

GMD: NA	County: Athens-Clarke	State: Georgia	Date: August, 2019
Drawn by: KFM	The Unified Government of Athens-Clarke County Department of Public Utilities 124 E Hancock Ave Athens, Georgia 30601 Fax: 706-613-3198      Voice: 706-613-3490		
Approved by: GJ			
Scale: AS-SHOWN			



# MH-6 Manhole Base with Hole Connection

MH6 - MANHOLE BASE WITH HOLE CONNECTION.dwg



## Manhole Base with Hole Connection

NTS

MH-6

Standard Specification and Detail for:

Manhole Base with Hole Connection

GMD: NA County: Athens-Clarke State: Georgia Date: August, 2019

Drawn by: KFM

Approved by: GJ

Scale: AS-SHOWN

The Unified Government of Athens-Clarke County  
Department of Public Utilities

124 E Hancock Ave  
Athens, Georgia 30601

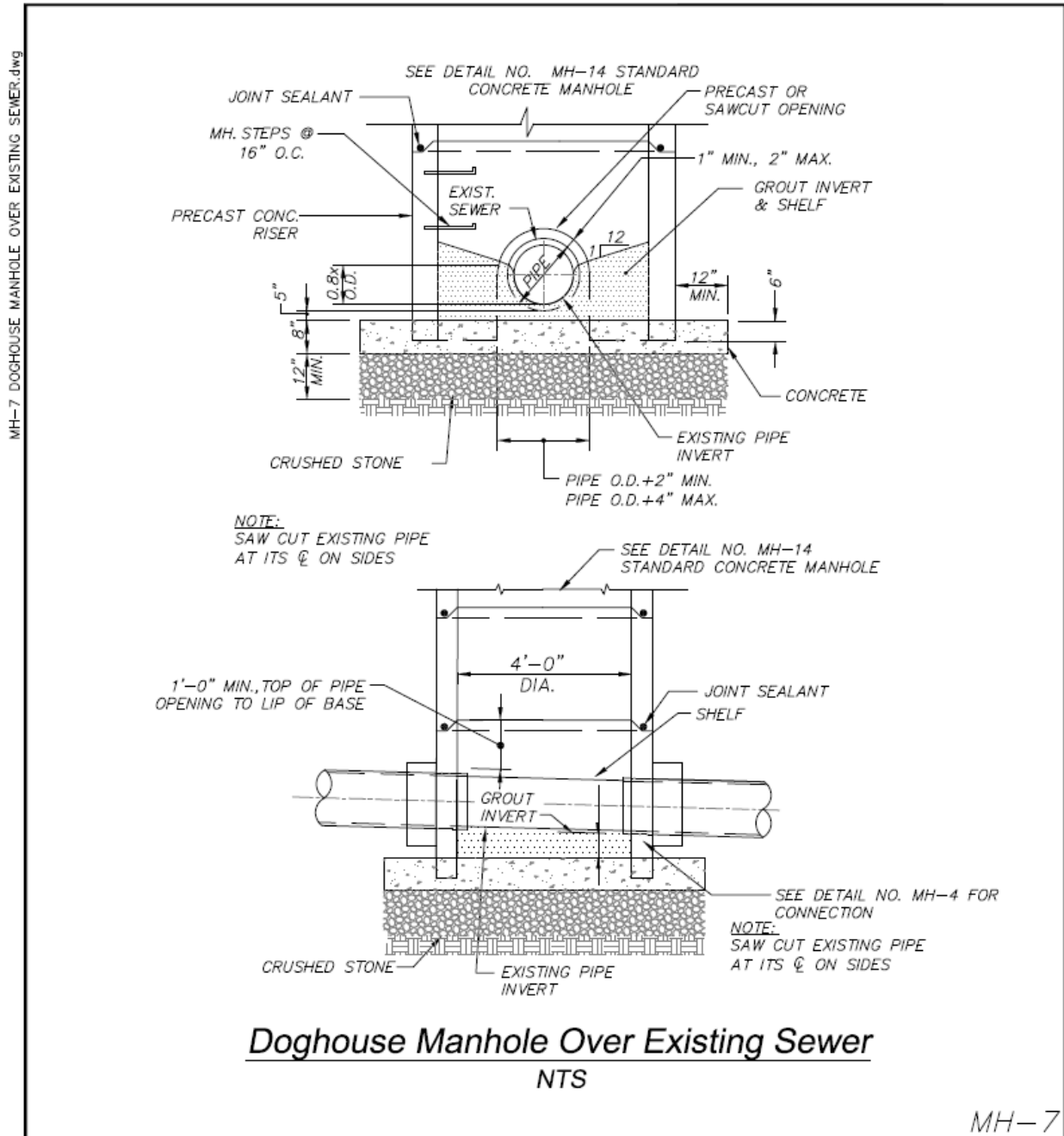
Fax: 706-613-3198

Voice: 706-613-3490





# MH-7 Doghouse - Manhole Over Existing Sewer



Standard Specification and Detail for:

## Doghouse Manhole Over Existing Sewer

GMD: NA	County: Athens-Clarke	State: Georgia	Date: August, 2019
Drawn by: KFM	The Unified Government of Athens-Clarke County <b>Department of Public Utilities</b> 124 E Hancock Ave Athens, Georgia 30601		
Approved by: GJ			
Scale: AS-SHOWN			

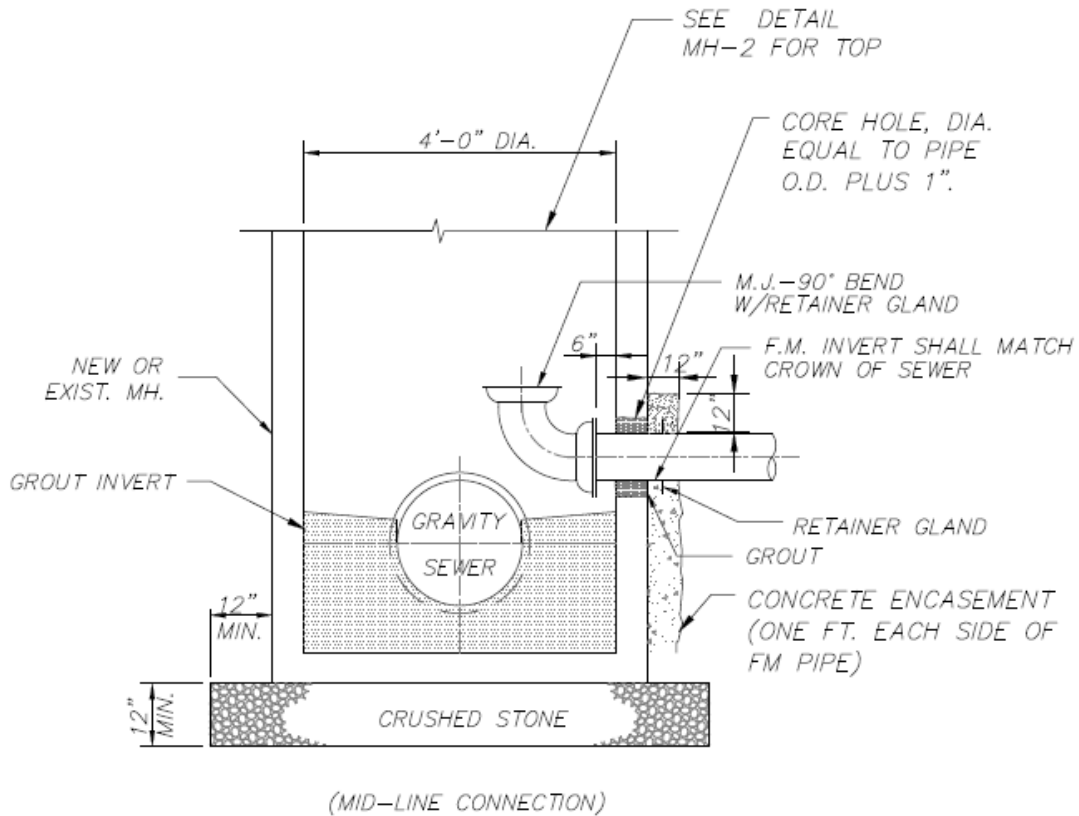
Fax: 706-613-3198

Voice: 706-613-3490



# MH-8 Force Main Discharge Manhole Type 1

ACC-MH8 FORCE MAIN DISCHARGE MANHOLE TYPE 1.dwg



## Force Main Discharge Manhole Type 1 NTS

MH-8

Standard Specification and Detail for:

Force Main Discharge Manhole Type 1

GMD: NA	County: Athens-Clarke	State: Georgia	Date: August 2019
Drawn by: KFM	The Unified Government of Athens-Clarke County Department of Public Utilities 124 E Hancock Ave Athens, Georgia 30601		
Approved by: GJ			
Scale: AS-SHOWN			

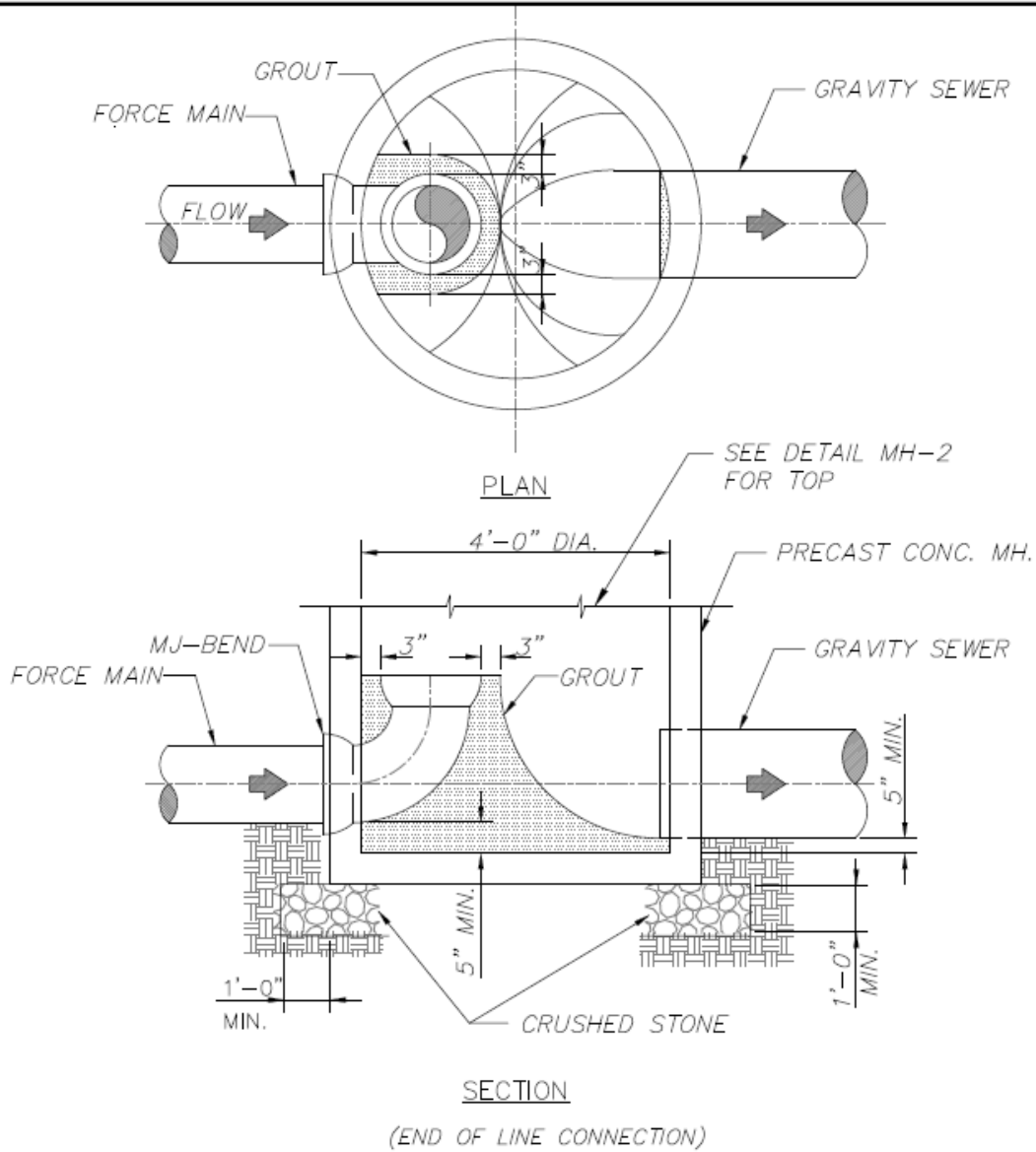
Fax: 706-613-3198

Voice: 706-613-3490



## MH-9 Force Main Discharge Manhole Type 2

ACC-MH9 FORCE MAIN DISCHARGE MANHOLE TYPE 2.dwg



## Force Main Discharge Manhole Type 2 NTS

MH-9

Standard Specification and Detail for:

Force Main Discharge Manhole Type 2

GMD: NA County: Athens-Clarke State: Georgia Date: August, 2019

Drawn by: KFM

Approved by: GJ

Scale: AS-SHOWN

The Unified Government of Athens-Clarke County  
Department of Public Utilities

124 E Hancock Ave  
Athens, Georgia 30601

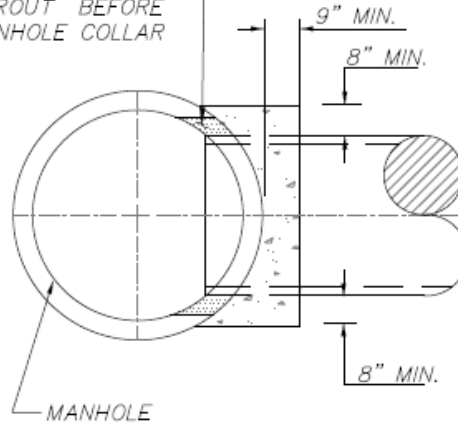
Fax: 706-613-3198 Voice: 706-613-3490



# MH-10 Manhole Collar

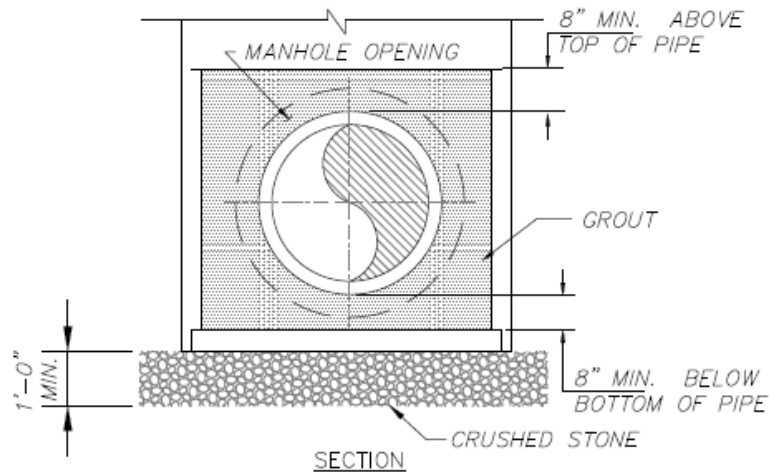
ACC-MH10 MANHOLE COLLAR.dwg

FILL VOID BETWEEN PIPE AND MANHOLE WALL WITH NON-SHRINK GROUT BEFORE FORMING MANHOLE COLLAR



PLAN

MANHOLE COLLARS SHALL BE USED FOR SEWER CONNECTIONS TO MANHOLES:  
1. IF EXIST. MANHOLE IS BRICK.  
2. IF MANHOLE IS CONSTRUCTED OVER EXIST. SEWER.



SECTION

**Manhole Collar**  
NTS

MH-10

Standard Specification and Detail for:

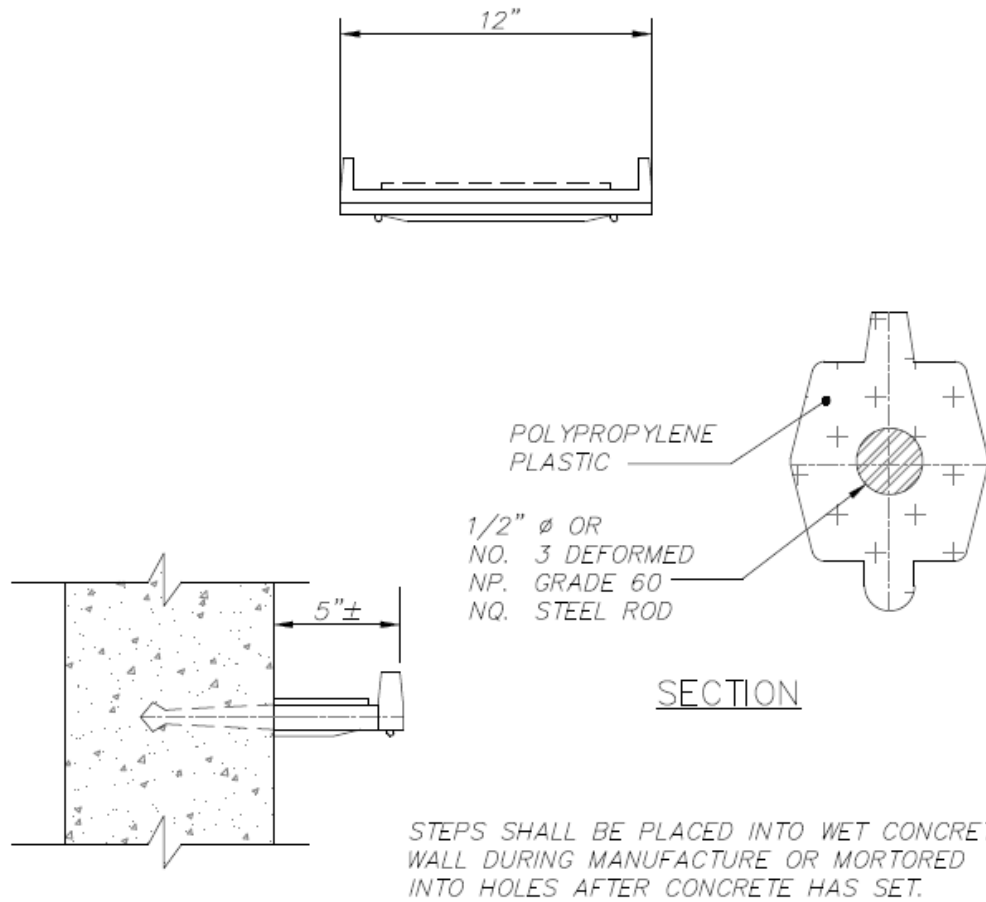
*Manhole Collar*

GMD: NA	County: Athens-Clarke	State: Georgia	Date: August, 2019
Drawn by: KFM	The Unified Government of Athens-Clarke County Department of Public Utilities 124 E Hancock Ave Athens, Georgia 30601 Fax: 706-613-3198      Voice: 706-613-3490		
Approved by: GJ			
Scale: AS-SHOWN			



# MH-11 Manhole Step

ACC-MH11 MANHOLE STEP.dwg



## Manhole Step NTS

MH-11

Standard Specification and Detail for:

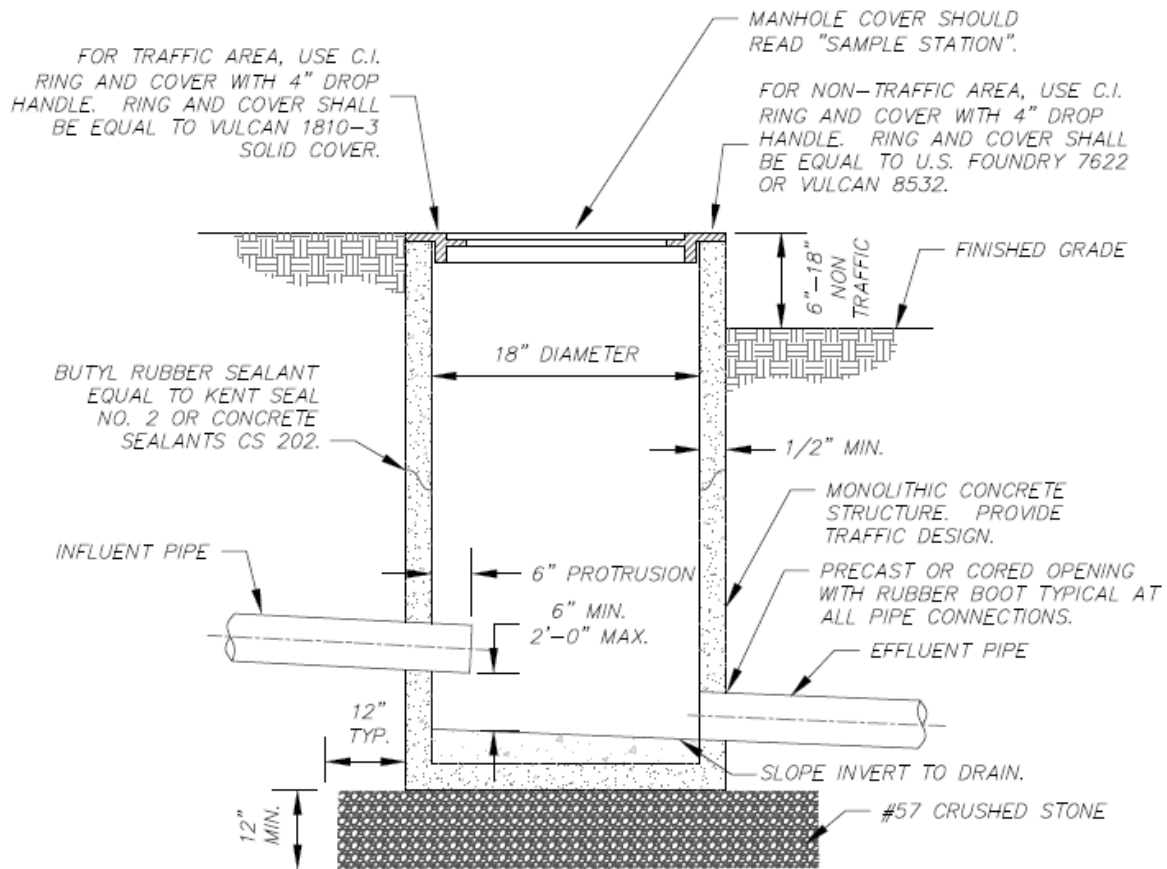
### Manhole Step

GMD: NA	County: Athens-Clarke	State: Georgia	Date: August, 2019
Drawn by: KFM	The Unified Government of Athens-Clarke County Department of Public Utilities 124 E Hancock Ave Athens, Georgia 30601		
Approved by: GJ			
Scale: AS-SHOWN			
Fax: 706-613-3198		Voice: 706-613-3490	



# MH-12 Sample Manhole

ACC-MH12 SAMPLE MANHOLE.dwg



**NOTE:**  
WHERE DEPTH OF STRUCTURE EXCEEDS 4'-0", MEET THE REQUIREMENTS OF SAMPLE STATION MANHOLE INDUSTRIAL INSTALLATION.

## Sample Manhole NTS

MH-12

Standard Specification and Detail for:

## Sample Manhole

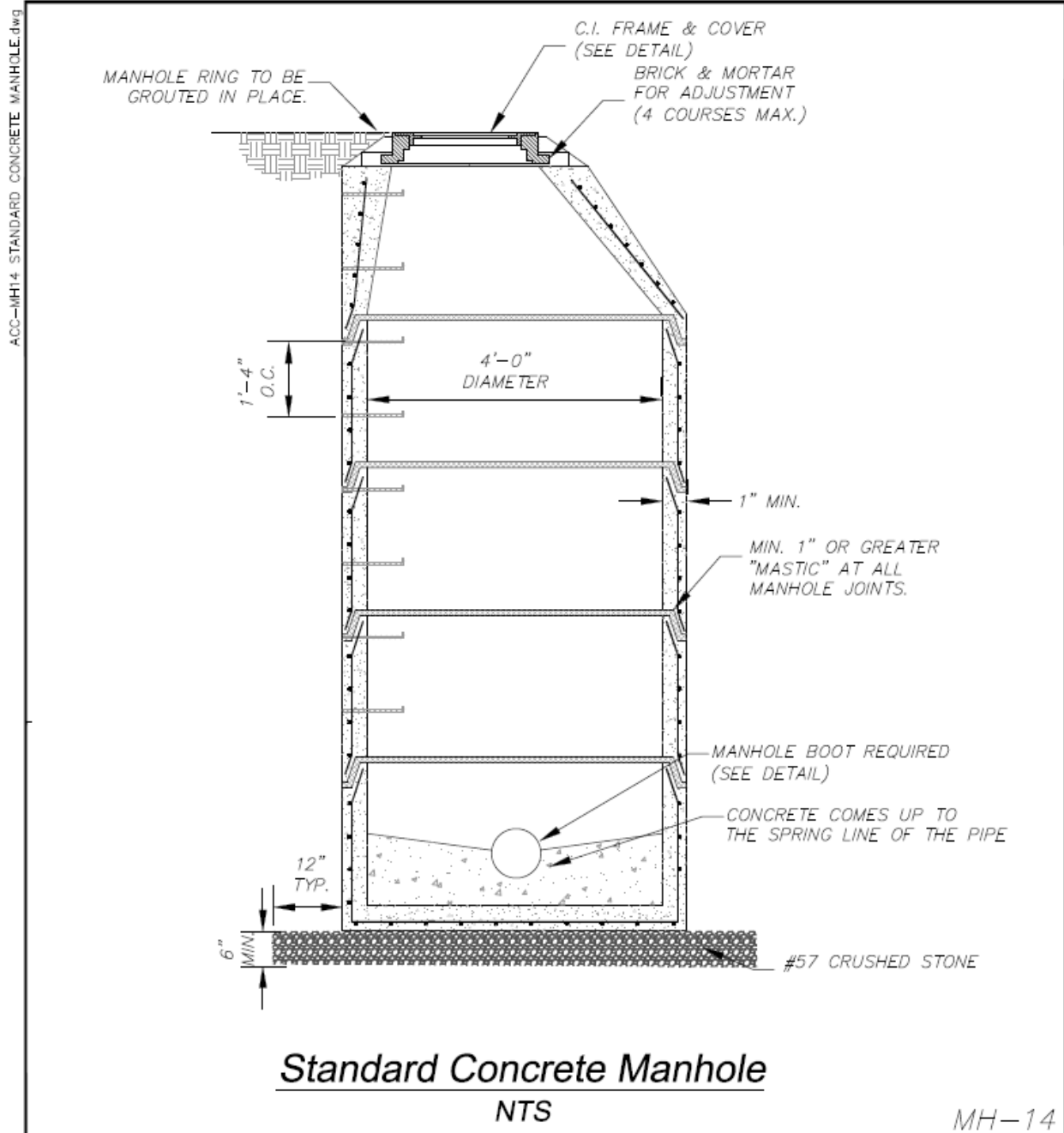
GMD: NA	County: Athens-Clarke	State: Georgia	Date: August, 2019
Drawn by: KFM	The Unified Government of Athens-Clarke County <b>Department of Public Utilities</b> 124 E Hancock Ave Athens, Georgia 30601 Fax: 706-613-3198      Voice: 706-613-3490		
Approved by: GJ			
Scale: AS-SHOWN			







## MH-14 Standard Concrete Manhole



Standard Specification and Detail for:

### Standard Concrete Manhole

GMD: NA	County: Athens-Clarke	State: Georgia	Date: August, 2019
Drawn by: KFM	The Unified Government of Athens-Clarke County <b>Department of Public Utilities</b> 124 E Hancock Ave Athens, Georgia 30601		
Approved by: GJ			
Scale: AS-SHOWN			

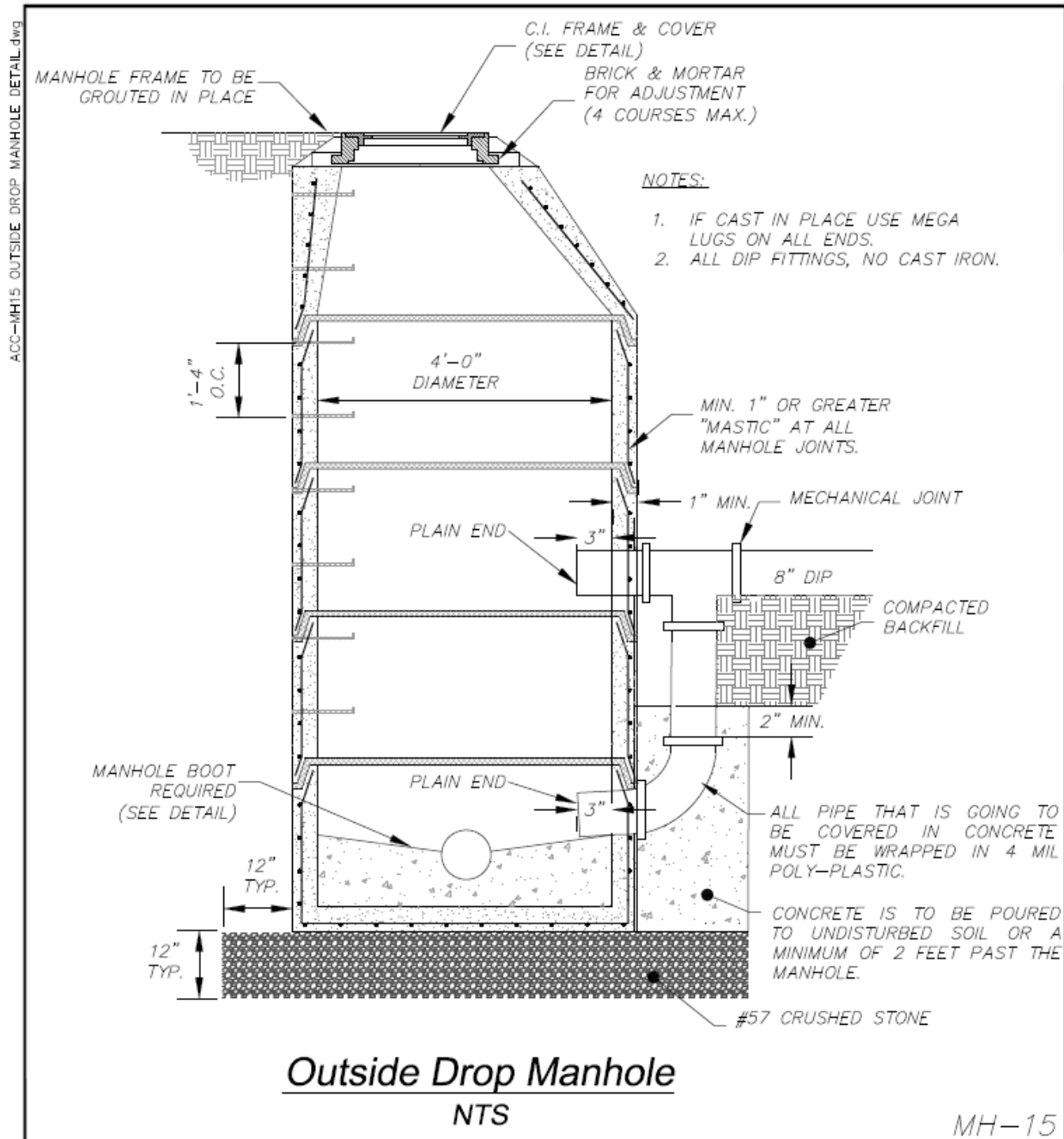
Fax: 706-613-3198

Athens, Georgia 30601

Voice: 706-613-3490



# MH-15 Outside Drop Manhole



Standard Specification and Detail for:

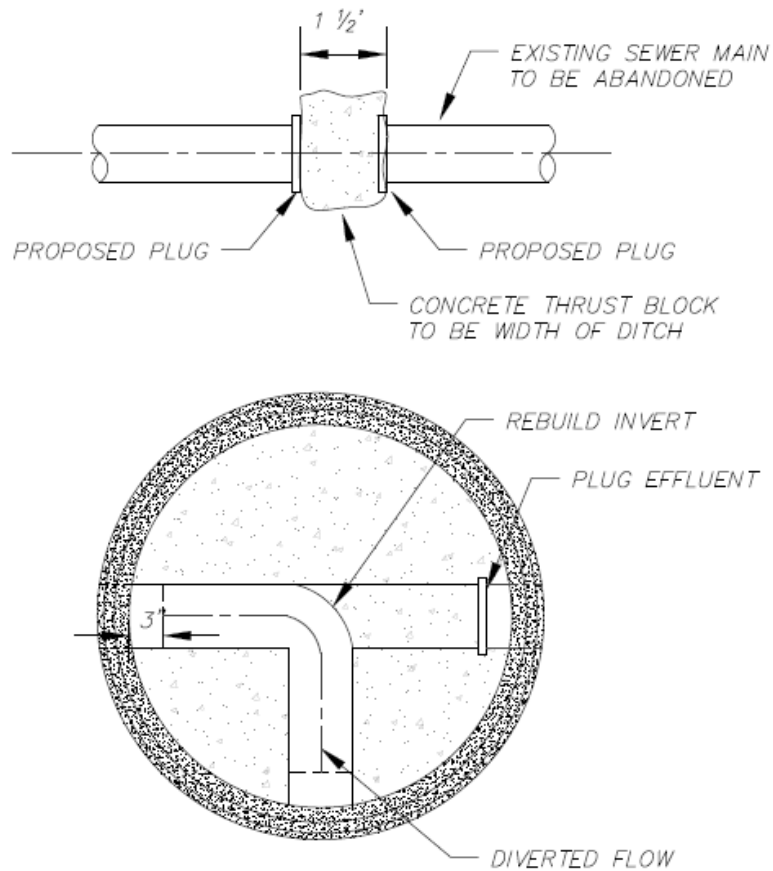
## Outside Drop Manhole

GMD: NA	County: Athens-Clarke	State: Georgia	Date: August, 2019
Drawn by: KFM	The Unified Government of Athens-Clarke County <b>Department of Public Utilities</b> 124 E Hancock Ave Athens, Georgia 30601 Fax: 706-613-3198      Voice: 706-613-3490		
Approved by: GJ			
Scale: AS-SHOWN			



# MH-16 Sewer Main Diversion

ACC-MH16 SEWER MAIN DIVERSION DETAIL.dwg



## Sewer Main Diversion NTS

MH-16

Standard Specification and Detail for:

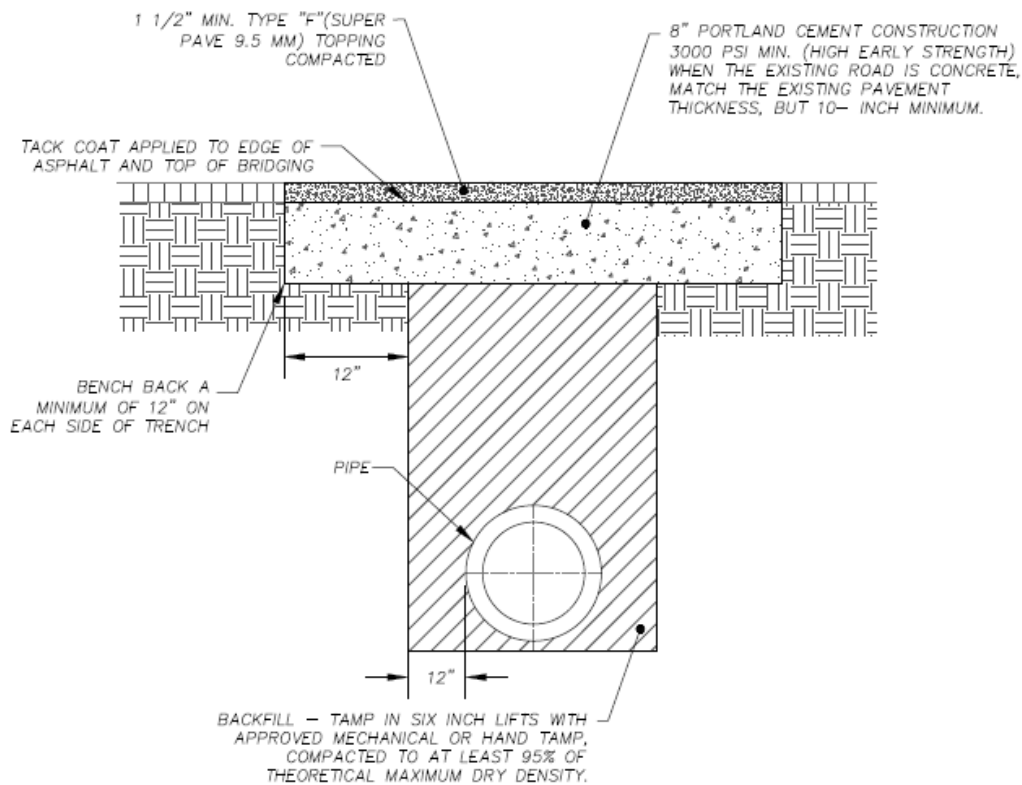
### *Sewer Main Diversion*

GMD: NA	County: Athens-Clarke	State: Georgia	Date: August, 2019
Drawn by: KFM	The Unified Government of Athens-Clarke County <b>Department of Public Utilities</b> 124 E Hancock Ave Athens, Georgia 30601 Fax: 706-613-3198      Voice: 706-613-3490		
Approved by: GJ			
Scale: AS-SHOWN			



## G-1 Paving Cut Detail

G-1 - PAVING CUT DETAIL.dwg



### NOTES:

1. ALL LATERAL STREET CUTS MUST BE COVERED WITH A STEEL PLATE OF SUFFICIENT THICKNESS TO SPAN THE CUT WITHOUT NOTICEABLE DEFLECTION. PLATES TO REMAIN IN PLACE UNTIL THE CONCRETE BASE HAS GAINED SUFFICIENT STRENGTH TO WITH STAND TRAFFIC LOADS (24 HR MIN.). WITHIN NOT LONGER THAN SEVEN CALENDAR DAYS OF BEGINNING OF CONCRETE POUR THE AREA WILL BE TOPPED OUT.
2. WHERE COMPACTION CAN NOT BE OBTAINED WITH EARTH MATERIALS, USE NO.57 OR FLOW ABLE FILL AS DETERMINED BY ACC INSPECTOR.
3. WORK TO BE INSPECTED BY THE ATHENS CLARKE COUNTY TRANSPORTATION AND PUBLIC WORKS INSPECTOR.

### Paving Cut Detail NTS

G-1

Standard Specification and Detail for:

Paving Cut Detail

GMD: NA County: Athens-Clarke State: Georgia Date: August, 2019

Drawn by: KFM

Approved by: GJ

Scale: AS-SHOWN

The Unified Government of Athens-Clarke County  
Department of Public Utilities124 E Hancock Ave  
Athens, Georgia 30601

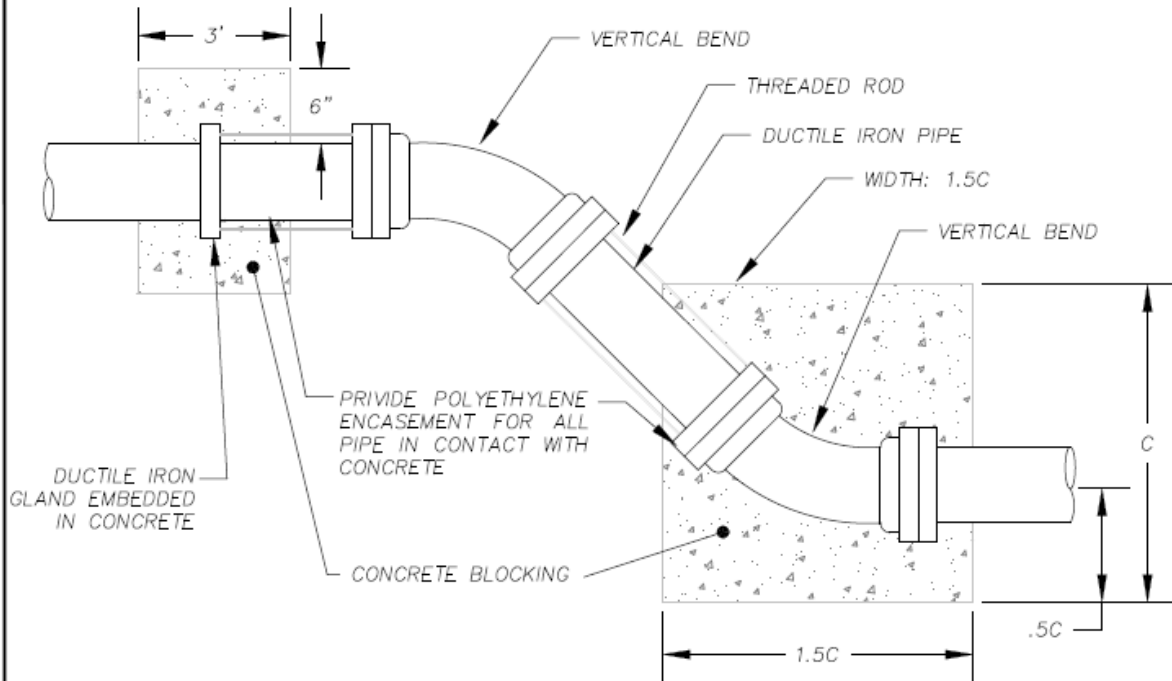
Fax: 706-613-3198

Voice: 706-613-3490



**G-2 Vertical Bend Detail**

DET-G-2 - VERTICAL BEND DETAIL.dwg

NOTE:

1. CONNECT THREADED RODS TO EMBEDDED FITTING OR RETAINER GLAND AS REQUIRED.

**Vertical Bend Detail**

NTS

G-2

Standard Specification and Detail for:

***Vertical Bend Detail***

GMD: NA	County: Athens-Clarke	State: Georgia	Date: August, 2019
Drawn by: KFM	<b>The Unified Government of Athens-Clarke County</b> <b>Department of Public Utilities</b> 124 E Hancock Ave Athens, Georgia 30601 Fax: 706-613-3198      Voice: 706-613-3490		
Approved by: GJ			
Scale: AS-SHOWN			



## G-3 Casing and Spacer Detail

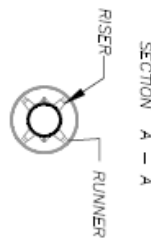
DET-G-3 — CASING AND SPACER DETAIL.dwg

### Casing and Spacer Detail

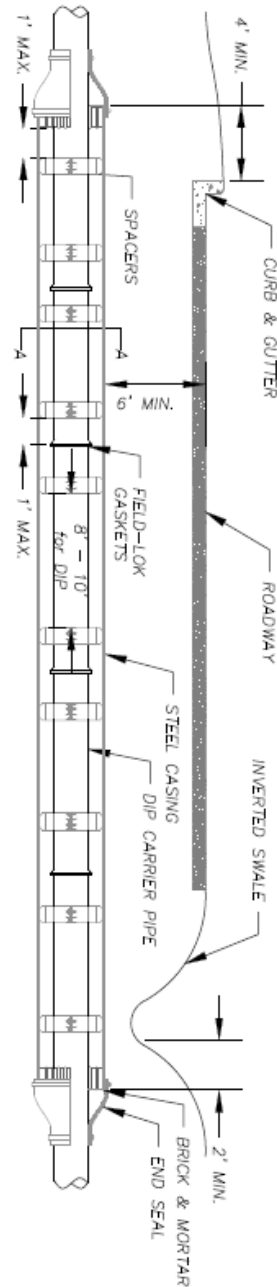
NTS

- NOTE:**
1. CASING TO EXTEND 4' BEYOND CURB & GUTTER OR EDGE OF PAVEMENT IN FILL SECTION.
  2. CASING TO EXTEND 2' BEYOND THE BACK EDGE OF THE BOTTOM OF THE DITCH OR 2' BEYOND THE BOTTOM OF A V-DITCH.
  3. FOR WATER AND/OR SANITARY SEWER ONLY.

UNDER RAILROADS		
PIPE DIAMETER	CASING DIAMETER	MIN. WALL THICKNESS
8"	18"	.313"
10"	20"	.344"
12"	22"	.375"
14"	24"	.407"
16"	30"	.469"



UNDER HIGHWAYS		
PIPE DIAMETER	CASING DIAMETER	MIN. WALL THICKNESS
8"	16"	.250"
10"	18"	.250"
12"	18"	.250"
16"	24"	.250"
20"	30"	.312"
30"	42"	.375"



G-3

Standard Specification and Detail for:

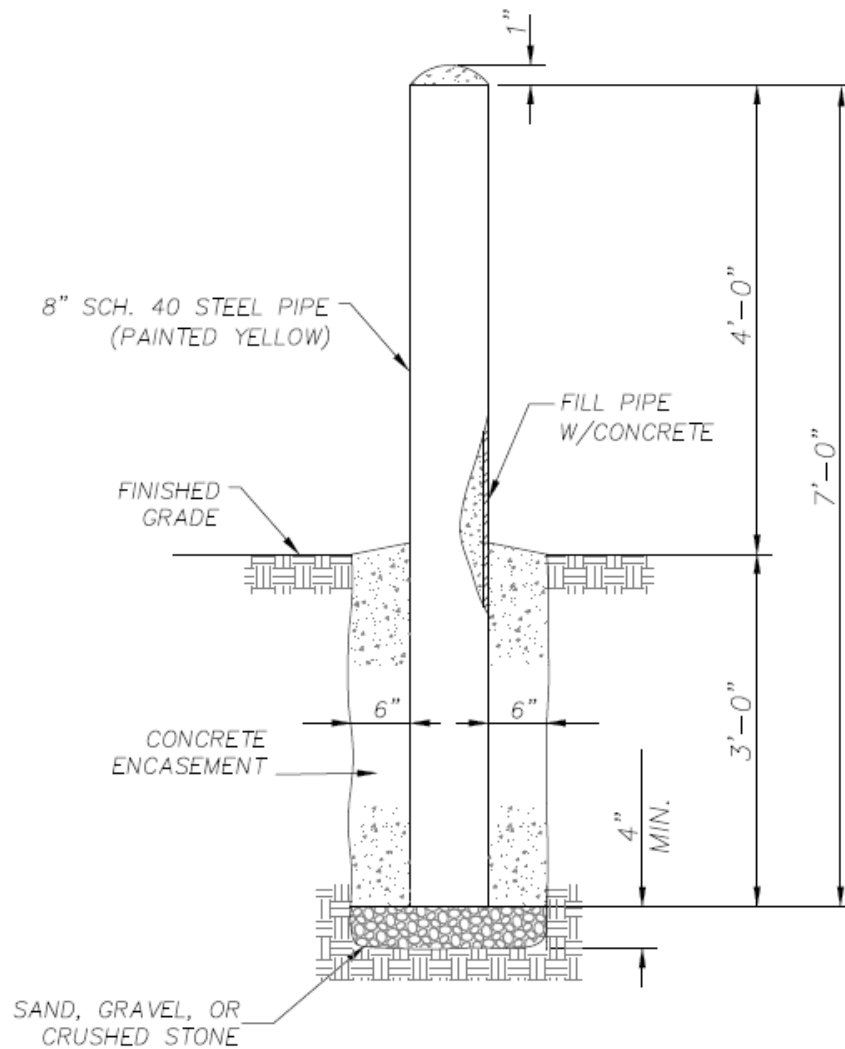
### Casing and Spacer Detail

GMD: NA	County: Athens-Clarke	State: Georgia	Date: August, 2019
Drawn by: KFM	The Unified Government of Athens-Clarke County <b>Department of Public Utilities</b> 124 E Hancock Ave Athens, Georgia 30601 Fax: 706-613-3198      Voice: 706-613-3490		
Approved by: GJ			
Scale: AS-SHOWN			



**G-4 Bollard**

DET-G-4- BOLLARD.dwg



**Bollard**  
NTS

G-4

Standard Specification and Detail for:

*Bollard*

GMD: NA	County: Athens-Clarke	State: Georgia	Date: August, 2019
Drawn by: KFM	<b>The Unified Government of Athens-Clarke County</b> <b>Department of Public Utilities</b> 124 E Hancock Ave Athens, Georgia 30601		
Approved by: GJ			
Scale: AS-SHOWN			

Fax: 706-613-3198

Voice: 706-613-3490

