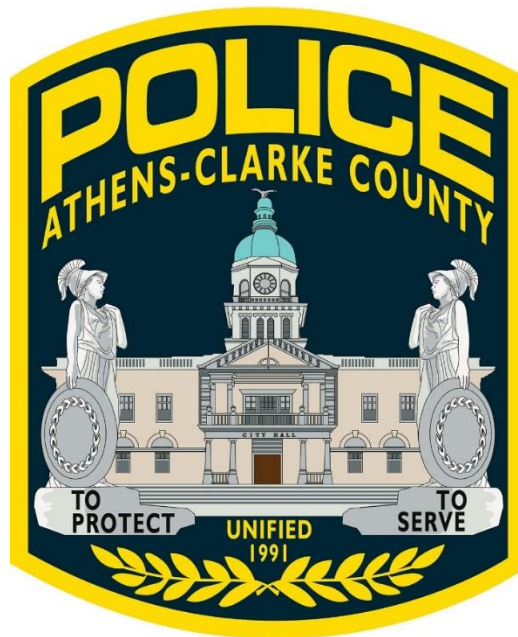


Athens-Clarke County Police Department

2021 Vehicle Crash & Traffic Enforcement Annual Report



Special Services Division
Traffic Enforcement Unit

Prepared by Lieutenant Jon McIlvaine

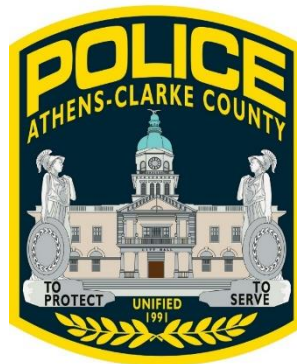
February 2022

Athens-Clarke County Police Department
Special Services Division
Traffic Enforcement Unit

3035 Lexington Road
Athens, Georgia 30605
706-613-3330

<https://accgov.com/200/Police/police>

Published February 3, 2022



For the purposes of this report, data are compiled by the Athens-Clarke County Police Department, Athens-Clarke County Traffic Engineering, and the Georgia Department of Transportation (GDOT). Data in this report is accurate as of the date of publishing. Data in this report may differ from that in other data sources, such as the Federal Fatality Analysis Reporting System (FARS), due to the timing of publications and rules for how data are compiled and maintained in Federal versus State/Local databases. If you have questions regarding this report, please contact the Athens-Clarke County Traffic Enforcement Unit commander (at 762)-400-7089.

Table of Contents

TABLE OF CONTENTS	iii
LIST OF FIGURES	iv
LIST OF TABLES	v
INTRODUCTION AND SCOPE	1
2021 ATHENS-CLARKE COUNTY CRASH HIGHLIGHTS	2
2017-2021 ATHENS-CLARKE COUNTY CRASH TRENDS	3
CRASHES AND INJURIES SUMMARY	6
FATAL CRASHES IN ATHENS-CLARKE COUNTY	7
CRASH CHARACTERISTICS	8
Top Contributing Factors	8
Hour and Day of Week	11
TRAFFIC ENFORCEMENT HIGHLIGHTS	13
APPENDIX	
Appendix A – List of Figures	16
Appendix B – List of Tables	19

List of Figures

Figure 1: Fatal Crash Rates Compared to Crashes	4
Figure 2: Fatal Crash Events by Year	7
Figure 3: 2021 Fatal Crashes by Month	7
Figure 4: Crashes by Time of Day	12
Figure 5: 2021 Citations by Type	14
Figure 6: Comparison of Enforcement, Crashes, and Fatal Crashes	15

List of Tables

Table 1: Athens-Clarke County Crashes per 1,000 Population	3
Table 2: Georgia Crashes per 1,000 Population	4
Table 3: Severity of Injury per Year	4, 6
Table 4: Hit and Run Crashes	5
Table 5: Athens-Clarke County Crashes by Driver Age Group	5
Table 6: Crashes in Athens-Clarke County by Manner of Collision	5
Table 7: Crashes by Year and Severity	6
Table 8: Most Prevalent Top Contributing Factors in Crashes	9
Table 9: Most Prevalent Top Contributing Factors in Crash-Related Fatalities	10
Table 10: Crashes by Hour and Day of Week, 2021	11
Table 11: Athens-Clarke County Police Traffic Enforcement	14
Table 12: 2021 Citations Issued by Type	14

This page intentionally left blank

Introduction

The objective of this report is to provide traffic crash statistics for Athens-Clarke County in 2021. The information presented in this report will help provide a resource for safety trends, the development of countermeasures, and the evaluation of highway safety programs, law enforcement efforts, and policy. Given the practical importance of vehicle crash data, this annual report presents an overview of the sources, trends, and problems associated with road traffic crashes.

Scope

The Athens-Clarke County Police Department, University of Georgia Police Department, and the Georgia State Patrol records traffic crash information electronically to the Georgia Electronic Accident Reporting System (GEARS). The scope of data used in this report is limited to that which is provided by GEARS. Crash data provided to GEARS is limited to all crashes that occur on public roadways and private property crashes involving bodily injury. Private property crashes which do not include bodily injury are not considered for the purposes of this annual report.

2021 Athens-Clarke County Crash Highlights

In 2021, the Athens-Clarke County Police Department, University of Georgia Police Department, and the Georgia State Patrol responded to 5,433 traffic crashes on public roadways (regardless of injury) or on private property when involving bodily injury.¹ Following is a breakdown of notable highlights:

- 5,433 crashes occurred involving 10,464 vehicles.
- 1,759 people were **injured** with 25 people **killed**.²
- Less than one (1) percent of crashes resulted in a **fatality**.
- 22.7 percent of all crashes resulted in an **injury**.
- 14.8 percent of crashes involved a **hit-and-run driver**.
- 28 percent of **pedestrians/bicyclists** killed in crashes were under the influence of **alcohol or drugs**.
- Less than two (2) percent of all crashes and 37 percent of fatal crashes involved **alcohol or drugs**.
- 12 percent of occupants in fatal crashes were **not wearing a seatbelt**.
- Six (6) percent of occupants in all crashes were **not wearing a seatbelt**.

Top contributing factors in crashes:

- Following too closely (28.58%)
- Failure to yield (16.58%)
- Other (9.72%)³

Top contributing factors in fatalities:

- Lane departure (32.43%)⁴
- Other (27.03%)
- Under the Influence (U.I.) (21.62%)

On average in Athens-Clarke County in 2021 ...

- A motor vehicle crash occurred every 96 minutes.
- A person was injured in a crash every 6 hours.
- A person was seriously injured in a crash every 4 days.
- A fatal crash occurred every 15 days.

¹ Does not include private property crashes where no bodily injury occurred.

² Includes an unborn child

³ Other is inclusive of any other factor not specifically listed on the GUMVAR

⁴ Combined total of Failed to Yield, Driver Lost Control, and Wrong Side of Road (all contributed 10.81%)

2017-2021 Athens-Clarke County Crash Trends

- When analyzed using population, Athens-Clarke County’s crash rate is at its lowest level in at least five years, at 41.65 per 1,000 population.⁵ (Table 1)
- When analyzed using population, 2021 Athens-Clarke County fatal crash rates have exceeded the Georgia fatal crash rate by 23.7 percent. (Table 1, Table 2)
- While the number of crashes has somewhat declined over the last five (5) years, the likelihood of fatal crashes occurring has increased 200% from 2017 to 2021. (Figure 1)
- Fatal, Serious, and Visible Injuries sustained in crashes exceed five (5) year averages. (Table 3)
- 14.76 percent of crashes in Athens-Clarke County are hit-and-runs, which is lower than the five-year average of 14.83 percent, but higher than the Georgia average of 13.89 percent. (Table 4)
- Drivers in the 16-24 age group are at the highest levels in the past five years, being involved in 58.58 percent of all crashes. (Table 5)
- The predominant manner of collision for all crashes in Athens-Clarke County is the rear-end crash, making up 36.85 percent of all crashes, slightly lower than the five-year average of 37.36 percent. (Table 6)

Table 1: Athens-Clarke County Crashes per 1,000 population

Year	Athens-Clarke County Crashes per 1,000 Population				
	Number of Crashes	Population*	Per 1,000	Fatal Crashes	Fatal Per 1,000
2017	5,847	126,815	46.11	8	0.06
2018	5,402	127,268	42.45	13	0.10
2019	5,672	128,331	44.20	15	0.12
2020	3,826	129,394	29.57	15	0.12
2021	5,433	130,457	41.65	24	0.18

*U.S. Census Bureau Population Estimates

⁵ CY 2020 is not given full weight due to COVID-19 restrictions. Vehicle traffic was significantly reduced during this time.

Figure 1: Fatal Crash Rates Compared to Crashes

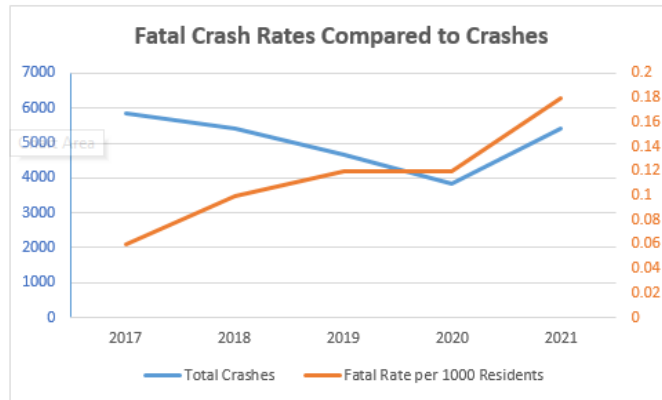


Table 2: Georgia Cashes per 1,000 Population

Year	Georgia Crashes per 1,000 Population				
	Number of Crashes	Population*	Per 1,000	Fatal Crashes	Fatal Per 1,000
2017	465,286	10,411,000	44.69	1486	0.143
2018	478,868	10,510,000	45.56	1508	0.143
2019	476,008	10,620,000	44.82	1860	0.175
2020	389,282	10,710,000	36.35	1726	0.161
2021	450,587	10,800,000	41.72	1907	0.177

*U.S. Census Bureau Population Estimates

Table 3: Severity of Injury per Year

Year	Severity of Injury per Year								
	Fatalities		Suspected Serious Injury		Minor or Visible Injury		Complaints of Injury		Total Injured Persons in Crashes
	Count	Percent	Count	Percent	Count	Percent	Count	Percent	Count
2017	9	0.45%	52	2.62%	412	20.72%	1,515	76.21%	1,988
2018	13	0.85%	52	3.39%	339	22.10%	1,130	73.66%	1,534
2019	15	0.82%	74	4.02%	428	23.26%	1,323	71.90%	1,840
2020	15	0.97%	232	15.03%	266	17.23%	1,031	66.77%	1,544
2021	24	1.36%	102	5.80%	889	50.54%	744	42.30%	1,759

Table 4: Hit-and-Run Crashes

Year	Athens-Clarke County Hit and Run Crashes		Georgia Hit and Run Crashes	
	Number of Crashes	Percentage of Total	Number of Crashes	Percentage of Total
2017	934	15.97%	59406	12.77%
2018	833	15.42%	63432	13.25%
2019	738	13.01%	63314	13.30%
2020	574	15.00%	57621	14.80%
2021	802	14.76%	69013	15.32%
	5yr Average	14.83%	5yr Average	13.89%

Table 5: Athens-Clarke County Crashes by Driver Age Group

Year	Athens-Clarke County Crashes by driver age group						
	16-24	25-34	35-44	45-54	55-64	65+	Unknown
2017	3096	2153	1438	1211	982	821	1648
2018	3145	2034	1347	1187	935	851	1229
2019	3384	2119	1462	1244	992	839	918
2020	2226	1390	962	775	679	527	678
2021	3425	2025	1257	1077	845	827	1007

Table 6: Crashes in Athens-Clarke County by Manner of Collision

Year	Athens-Clarke County Crashes by Manner of Collision				
	Rear End	Sideswipe	Angle	Head On	Non Motor Vehicle
2017	41.91%	13.05%	27.51%	3.37%	14.16%
2018	36.94%	13.82%	31.64%	2.04%	15.56%
2019	38.04%	14.66%	30.13%	1.60%	15.57%
2020	33.04%	13.71%	30.52%	2.17%	20.56%
2021	36.85%	13.76%	30.78%	2.21%	16.40%

Crashes and Injuries Summary

- The percentage of crashes involving fatalities or injuries are each at their third-highest level in the past five years, at 0.44 percent and 32.38 percent, respectively. (Table 7)
- The percentage of people in crashes with a suspected serious injury is at the second-highest level in the past five years at 5.8 percent. (Table 3)

Table 7: Crashes by Year and Severity

Year	Fatal Crashes		Injury Crashes		Property Damage Only Crashes		Total Crashes	
	Count	Percent	Count	Percent	Count	Percent	Count	Percent
2017	8	0.14%	1,995	34.12%	3,852	65.88%	5,847	100.00%
2018	13	0.24%	1,534	28.40%	3,868	71.60%	5,402	100.00%
2019	15	0.26%	1,840	32.44%	3,832	67.56%	5,672	100.00%
2020	15	0.39%	1,544	40.36%	2,282	59.64%	3,826	100.00%
2021	24	0.44%	1,759	32.38%	3,674	67.62%	5,433	100.00%

Table 3: Severity of Injury per Year

Year	Severity of Injury per Year								
	Fatalities		Suspected Serious Injury		Minor or Visible Injury		Complaints of Injury		Total Injured Persons in Crashes
	Count	Percent	Count	Percent	Count	Percent	Count	Percent	Count
2017	9	0.45%	54	2.71%	416	20.85%	1,516	75.99%	1,995
2018	13	0.85%	52	3.39%	339	22.10%	1,130	73.66%	1,534
2019	15	0.82%	74	4.02%	428	23.26%	1,323	71.90%	1,840
2020	15	0.97%	232	15.03%	266	17.23%	1,031	66.77%	1,544
2021	24	1.36%	102	5.80%	889	50.54%	744	42.30%	1,759

Fatal Crashes in Athens-Clarke County

During 2021 in Athens-Clarke County, 24 fatal vehicle crashes resulted in 25 deaths. Athens-Clarke County Police Department's Traffic Unit investigated 22 fatal crashes, while the Georgia State Patrol investigated two (2).

- In 2021, fatal vehicle crash events were at a ten-year high. (Figure 2)
- Seven pedestrians and one bicyclist died in crashes in 2021.
- Four of the pedestrian crashes involved a **hit-and-run vehicle**.
- Decedents in five fatal crashes were **not wearing a seatbelt**.
- January, February, September, and October had the **highest number of fatal crashes**. (Figure 3)

Figure 2: Fatal Crash Events by Year

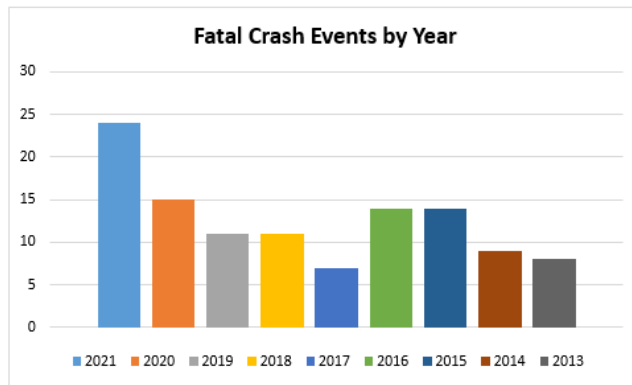
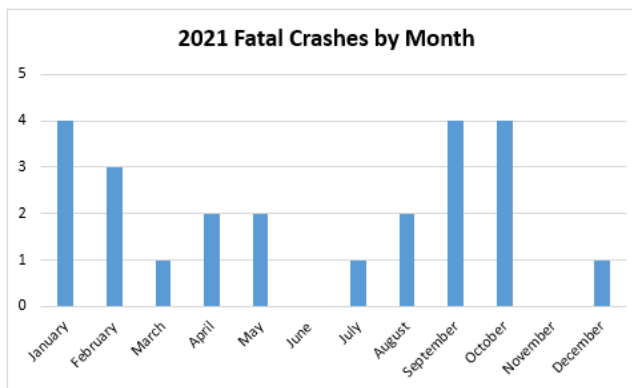


Figure 3: 2021 Fatal Crashes by Month



Crash Characteristics

Top Contributing Factors for the At-fault Vehicle

This section contains data from the Operator Contributing Factors section of the Georgia Uniform Motor Vehicle Accident Report form for each vehicle involved in a crash. The form provides the officer at the crash scene with the opportunity to record up to 36 contributing factors for each involved vehicle. The contributing factors are counted and listed hierarchically based upon frequency.

Most Prevalent Top Contributing Factors in Crashes (Table 8):

- Following too close (28.58%)
- Failed to yield (16.58%)
- Other (9.72%)

Most Prevalent Top Contributing Factors in Crash-related Fatalities (Table 9):

- Lane departure (32.43%)⁶
- Other (27.03%)⁷
- Under the Influence (U.I.) (21.62%)

⁶ Combined total of Failed to Yield, Driver Lost Control, and Wrong Side of Road (all contributed 10.81%)

⁷ Other is inclusive of any other factor not specifically listed on the GUMVAR

Table 8: Most Prevalent Top Contributing Factors in Crashes

Contributing Factor	Frequency	Percentage
Following Too Close	1667	28.58%
Failed to Yield	967	16.58%
Other	567	9.72%
Changed Lanes Improperly	500	8.57%
Misjudged Clearance	441	7.56%
Improper Backing	234	4.01%
Driver Lost Control	213	3.65%
Too Fast for Conditions	213	3.65%
Improper Turn	162	2.78%
Parked Improperly	162	2.78%
Inattentive or Other Distraction (Distracted)	133	2.28%
Under the Influence (U.I.)	119	2.04%
Improper Passing	73	1.25%
Wrong Side of Road	63	1.08%
Driver Condition	56	0.96%
Vision Obscured	46	0.79%
Other Interior Distraction (Distracted)	42	0.72%
Reckless Driving	31	0.53%
Disregard Police - Evasion	25	0.43%
Other Activity-Mobile Device (Distracted)	23	0.39%
Exceeding Speed Limit	21	0.36%
Not Visible (Object, Person, or Vehicle)	18	0.31%
Other Exterior Distraction (Distracted)	18	0.31%
Aggressive Driving	17	0.29%
Occupant Distraction (Distracted)	17	0.29%
Texting (Distracted)	5	0.09%
Disregard Other Traffic Control	0	0.00%
Disregard Police - Traffic Control	0	0.00%
Disregard Stop Sign/Signal	0	0.00%
Improper Passing of School Bus	0	0.00%
No Signal/Improper Signal	0	0.00%
Racing	0	0.00%
Reaction to Object or Animal	0	0.00%
Talking on Hand-Held Device (Distracted)	0	0.00%
Talking on Hands-Free Device (Distracted)	0	0.00%

Table 9: Most Prevalent Top Contributing Factors in Crash-Related Fatalities

Contributing Factor	Frequency	Percentage
Other	10	27.03%
Under the Influence (U.I.)	8	21.62%
Failed to Yield	4	10.81%
Driver Lost Control	4	10.81%
Wrong Side of Road	4	10.81%
Not Visible (Object, Person, or Vehicle)	3	8.11%
Too Fast for Conditions	2	5.41%
Improper Backing	1	2.70%
Driver Condition	1	2.70%

Hour and Day of Week ⁸

- The fewest crashes through any given week occur on Sunday (10.45%), while the highest frequency of crashes occurs on Friday (16.38%). (Table 10)
- No matter the day of the week, the highest number of crashes occurred from noon to 6 p.m., 53.76 percent in 2021.

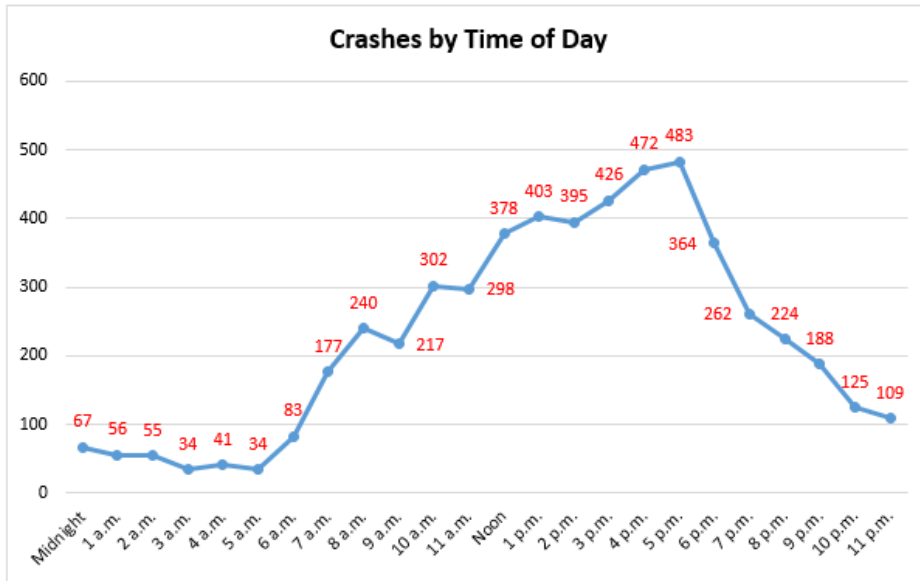
Table 10: Crashes by Hour and Day of Week, 2021⁹

Hour	Crashes							Total by Hour
	Sun	Mon	Tues	Wed	Thurs	Fri	Sat	
Midnight	16	7	8	7	4	9	16	67
1 a.m.	20	4	5	6	2	5	14	56
2 a.m.	14	5	1	6	5	7	17	55
3 a.m.	11	3	2	2	2	4	10	34
4 a.m.	9	6	2	7	5	1	11	41
5 a.m.	3	4	7	6	5	3	6	34
6 a.m.	8	14	15	14	7	17	8	83
7 a.m.	9	36	38	35	24	24	11	177
8 a.m.	8	39	51	42	46	35	19	240
9 a.m.	18	41	42	34	35	25	22	217
10 a.m.	22	57	52	47	45	41	38	302
11 a.m.	30	54	52	32	53	40	37	298
Noon	39	50	65	45	64	78	37	378
1 p.m.	36	54	60	79	49	71	54	403
2 p.m.	42	48	67	75	58	71	34	395
3 p.m.	52	54	74	57	61	79	49	426
4 p.m.	43	67	63	75	85	89	50	472
5 p.m.	31	85	97	77	79	76	38	483
6 p.m.	41	56	48	56	63	62	38	364
7 p.m.	28	34	34	41	51	35	39	262
8 p.m.	30	33	25	43	26	35	32	224
9 p.m.	30	17	18	29	20	34	40	188
10 p.m.	19	14	9	17	17	24	25	125
11 p.m.	9	11	10	9	13	25	32	109
Total Crashes	568	793	845	841	819	890	677	5,433

⁸ For reference, crashes during the hour of 1 a.m. are crashes from 1 a.m. to 1:59 a.m.

⁹ Numbers are shaded such that darker shading identifies higher numbers.

Figure 4: Crashes by Time of Day



Traffic Enforcement Highlights

The Traffic Unit of the Athens-Clarke County Police Department has the primary responsibility for the enforcement of traffic law. However, it is the responsibility of all officers to conduct traffic enforcement duties. The ultimate goal of traffic enforcement is to obtain voluntary compliance with traffic laws to prevent vehicle crashes and reduce the likelihood of injury and property damage.

- In 2021, the Athens-Clarke County Police Department conducted 9,144 traffic stops. Discounting reduced enforcement during CY 2020 (COVID-19), this is the lowest amount of stops conducted since ACCPD began tracking citation data. (Table 11)
- A combined 9,982 citations and warnings were given to motorists who were observed violating traffic laws in 2021.¹⁰ Discounting reduced enforcement during CY 2020 (COVID-19), this is the lowest number of citations and/or warnings issued since 2013 when ACCPD began tracking such data. (Table 11)
- In total, 1,967 citations and warnings for speeding were issued in 2021, comprising 19.73 percent of all citations and warnings. (Table 12) (Figure 5)
- 10.49 percent of citations and warnings issued in 2021 were for distracted driving or violation of the Georgia Hands Free law.¹¹ (Table 12) (Figure 5)
- The largest category of citation data available is ‘Other’, which comprises of all other citation types not specifically listed.¹² (Table 12)
- From 2013 through 2021, the total number of crashes remain relatively constant. However, the number of fatal vehicle crashes has increased as citations decreased. (Figure 6)

¹⁰ A single traffic stop may result in more than one (1) citation or warning being issued to the driver.

¹¹ State Law prohibits holding a cellular phone or other electronic devices with any part of the driver’s body while operating a motor vehicle.

¹² ‘Other’ citations types include equipment violations, lane violations, stop sign violations, etc.

Table 11: Athens-Clarke County Police Traffic Enforcement

Athens-Clarke County Police Traffic Enforcement									
Year	2021	2020	2019	2018	2017	2016	2015	2014	2013
Traffic Stops	9,144	8,851	18,639	18,492	16,804	14,719	16,963	24,008	28,662
Citations by Unit									
Traffic Unit	3205	2145	5089	7493	8670	10217	14014	17697	18082
Days East	779	463	909	1148	470	982	3013	496	1939
Evening East	2072	1099	2130	1247	496	441	1238	894	1377
Morning East	694	633	1053	814	969	1314	2082	2008	2347
Days West	782	516	1795	1637	433	58	1122	1090	2226
Evening West	1559	358	3173	2398	2454	2471	1967	591	1709
Morning West	891	919	1789	2314	307	1264	698	1113	1614
Other Units	0	0	0	0	0	12	423	640	897
Total	9982	6133	15938	17051	13799	16759	24557	24529	30191

Table 12: 2021 Citations Issued by Type

2021 Citations Issued by Type	
Speeding	1967
Seatbelt	249
Child Restraints	88
No Insurance	206
Distracted/Texting	1046
Other	6416
Total	9972

Figure 5: 2021 Citations by Type

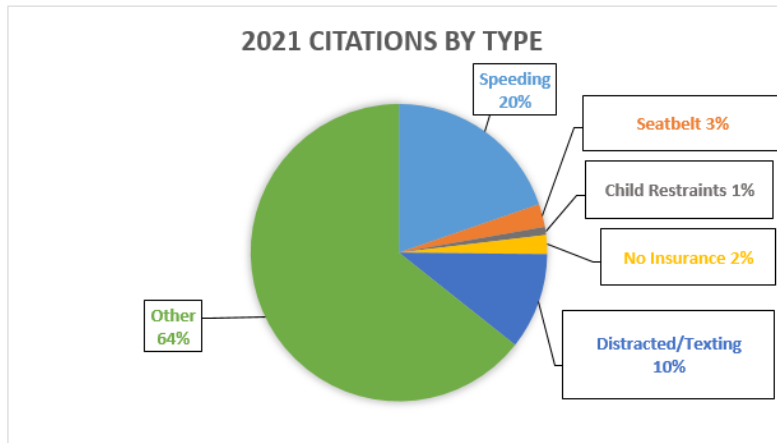
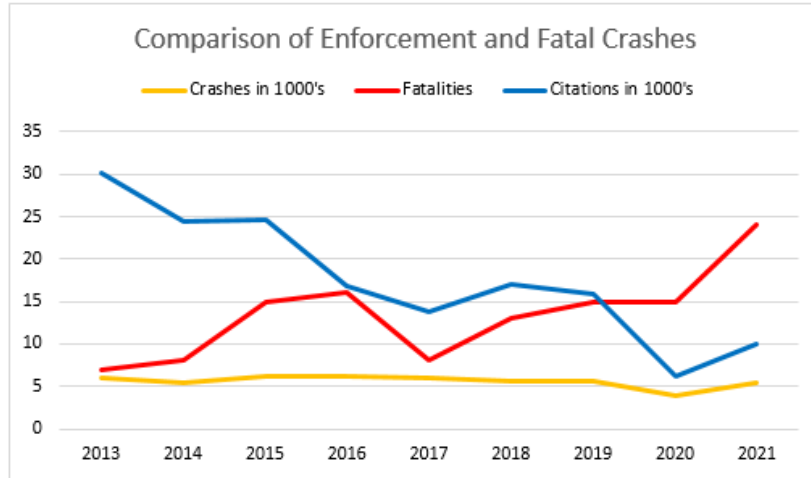


Figure 6: Comparison of Enforcement, Crashes, and Fatal Crashes



Appendix – A

List of Figures

Figure 1: Fatal Crash Rates Compared to Crashes

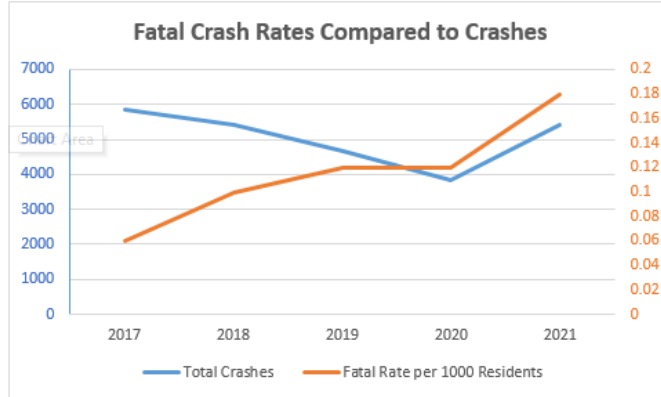


Figure 2: Fatal Crash Events by Year

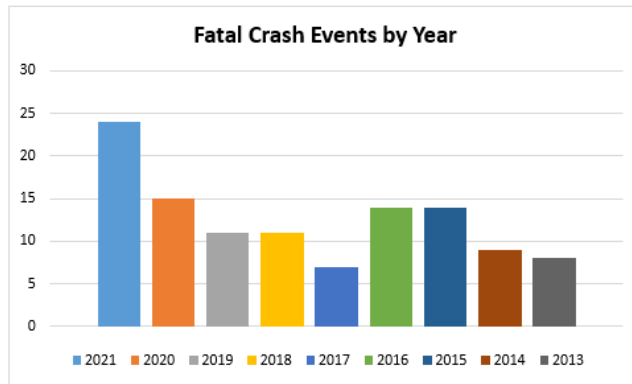


Figure 3: 2021 Fatal Crashes by Month

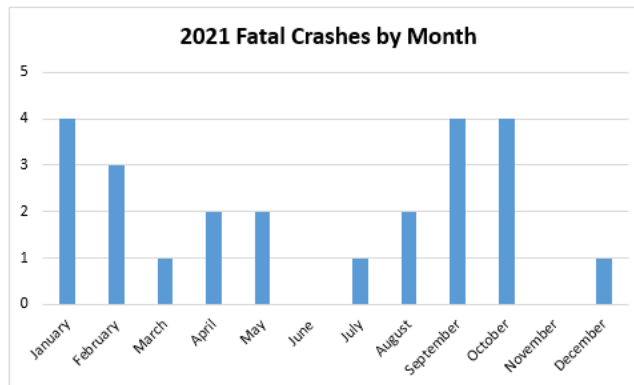


Figure 4: Crashes by Time of Day

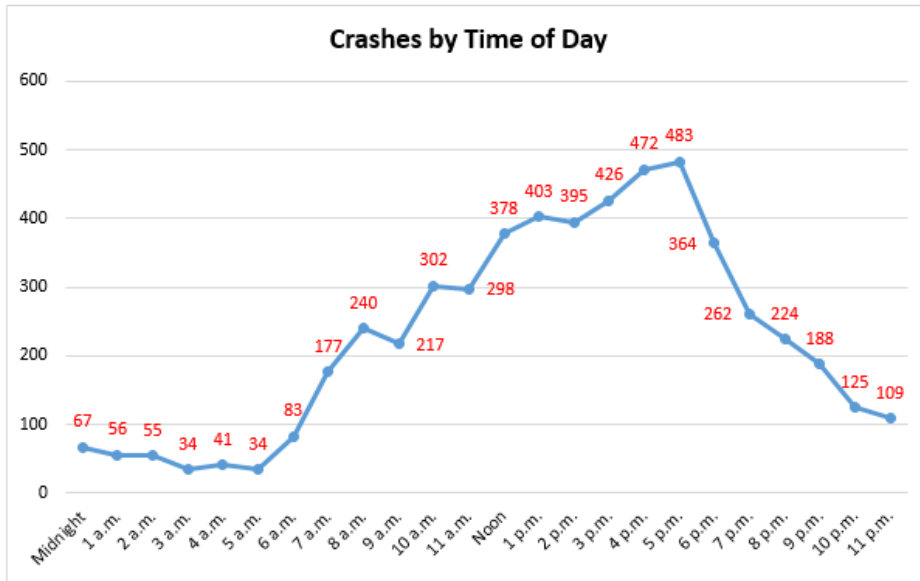


Figure 5: 2021 Citations by Type

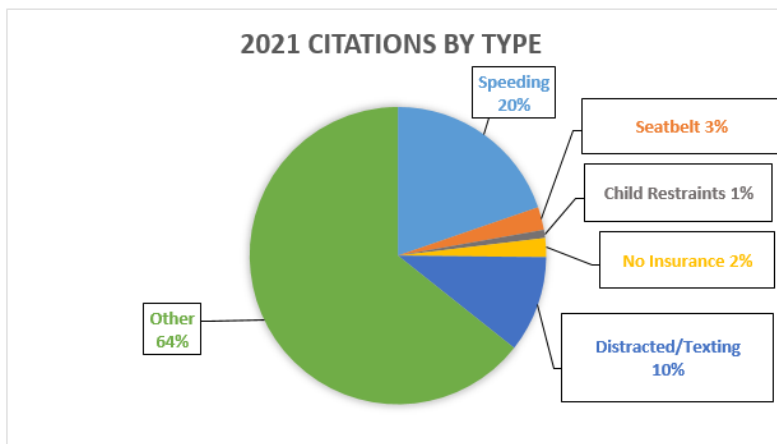
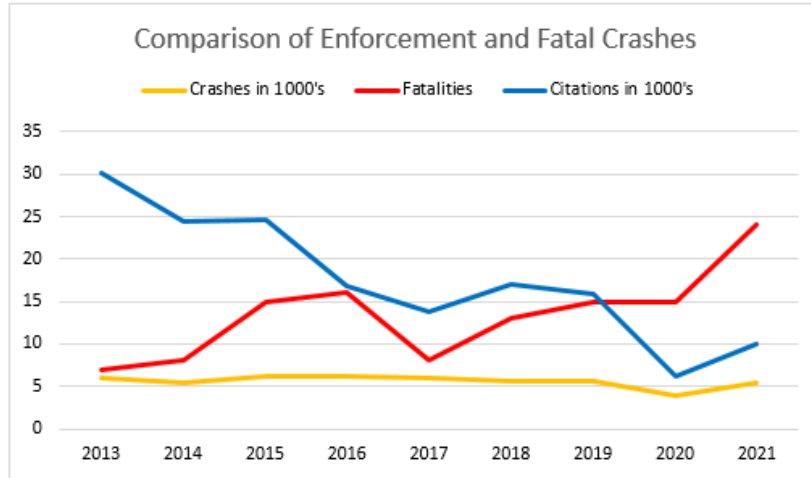


Figure 6: Comparison of Enforcement, Crashes, and Fatal Crashes



Appendix – B

List of Tables

Table 1: Athens-Clarke County Crashes per 1,000 Population

Year	Athens-Clarke County Crashes per 1,000 Population				
	Number of Crashes	Population*	Per 1,000	Fatal Crashes	Fatal Per 1,000
2017	5,847	126,815	46.11	8	0.06
2018	5,402	127,268	42.45	13	0.10
2019	5,672	128,331	44.20	15	0.12
2020	3,826	129,394	29.57	15	0.12
2021	5,433	130,457	41.65	24	0.18

*U.S. Census Bureau Population Estimates

Table 2: Georgia Crashes per 1,000 Population

Year	Georgia Crashes per 1,000 Population				
	Number of Crashes	Population*	Per 1,000	Fatal Crashes	Fatal Per 1,000
2017	465,286	10,411,000	44.69	1486	0.143
2018	478,868	10,510,000	45.56	1508	0.143
2019	476,008	10,620,000	44.82	1860	0.175
2020	389,282	10,710,000	36.35	1726	0.161
2021	450,587	10,800,000	41.72	1907	0.177

*U.S. Census Bureau Population Estimates

Table 3: Severity of Injury per Year

Year	Severity of Injury per Year								
	Fatalities		Suspected Serious Injury		Minor or Visible Injury		Complaints of Injury		Total Injured Persons in Crashes
	Count	Percent	Count	Percent	Count	Percent	Count	Percent	Count
2017	9	0.45%	52	2.62%	412	20.72%	1,515	76.21%	1,988
2018	13	0.85%	52	3.39%	339	22.10%	1,130	73.66%	1,534
2019	15	0.82%	74	4.02%	428	23.26%	1,323	71.90%	1,840
2020	15	0.97%	232	15.03%	266	17.23%	1,031	66.77%	1,544
2021	24	1.36%	102	5.80%	889	50.54%	744	42.30%	1,759

Table 4: Hit and Run Crashes

Year	Athens-Clarke County Hit and Run Crashes		Georgia Hit and Run Crashes	
	Number of Crashes	Percentage of Total	Number of Crashes	Percentage of Total
2017	934	15.97%	59406	12.77%
2018	833	15.42%	63432	13.25%
2019	738	13.01%	63314	13.30%
2020	574	15.00%	57621	14.80%
2021	802	14.76%	69013	15.32%
	5yr Average	14.83%	5yr Average	13.89%

Table 5: Athens-Clarke County Crashes by Driver Age Group

Year	Athens-Clarke County Crashes by driver age group						
	16-24	25-34	35-44	45-54	55-64	65+	Unknown
2017	3096	2153	1438	1211	982	821	1648
2018	3145	2034	1347	1187	935	851	1229
2019	3384	2119	1462	1244	992	839	918
2020	2226	1390	962	775	679	527	678
2021	3425	2025	1257	1077	845	827	1007

Table 6: Crashes in Athens-Clarke County by Manner of Collision

Year	Athens-Clarke County Crashes by Manner of Collision				
	Rear End	Sideswipe	Angle	Head On	Non Motor Vehicle
2017	41.91%	13.05%	27.51%	3.37%	14.16%
2018	36.94%	13.82%	31.64%	2.04%	15.56%
2019	38.04%	14.66%	30.13%	1.60%	15.57%
2020	33.04%	13.71%	30.52%	2.17%	20.56%
2021	36.85%	13.76%	30.78%	2.21%	16.40%

Table 7: Crashes by Year and Severity

Year	Fatal Crashes		Injury Crashes		Property Damage Only Crashes		Total Crashes	
	Count	Percent	Count	Percent	Count	Percent	Count	Percent
2017	8	0.14%	1,995	34.12%	3,852	65.88%	5,847	100.00%
2018	13	0.24%	1,534	28.40%	3,868	71.60%	5,402	100.00%
2019	15	0.26%	1,840	32.44%	3,832	67.56%	5,672	100.00%
2020	15	0.39%	1,544	40.36%	2,282	59.64%	3,826	100.00%
2021	24	0.44%	1,759	32.38%	3,674	67.62%	5,433	100.00%

Table 8: Most Prevalent Top Contributing Factors in Crashes

Contributing Factor	Frequency	Percentage
Following Too Close	1667	28.58%
Failed to Yield	967	16.58%
Other	567	9.72%
Changed Lanes Improperly	500	8.57%
Misjudged Clearance	441	7.56%
Improper Backing	234	4.01%
Driver Lost Control	213	3.65%
Too Fast for Conditions	213	3.65%
Improper Turn	162	2.78%
Parked Improperly	162	2.78%
Inattentive or Other Distraction (Distracted)	133	2.28%
Under the Influence (U.I.)	119	2.04%
Improper Passing	73	1.25%
Wrong Side of Road	63	1.08%
Driver Condition	56	0.96%
Vision Obscured	46	0.79%
Other Interior Distraction (Distracted)	42	0.72%
Reckless Driving	31	0.53%
Disregard Police - Evasion	25	0.43%
Other Activity-Mobile Device (Distracted)	23	0.39%
Exceeding Speed Limit	21	0.36%
Not Visible (Object, Person, or Vehicle)	18	0.31%
Other Exterior Distraction (Distracted)	18	0.31%
Aggressive Driving	17	0.29%
Occupant Distraction (Distracted)	17	0.29%
Texting (Distracted)	5	0.09%
Disregard Other Traffic Control	0	0.00%
Disregard Police - Traffic Control	0	0.00%
Disregard Stop Sign/Signal	0	0.00%
Improper Passing of School Bus	0	0.00%
No Signal/Improper Signal	0	0.00%
Racing	0	0.00%
Reaction to Object or Animal	0	0.00%
Talking on Hand-Held Device (Distracted)	0	0.00%
Talking on Hands-Free Device (Distracted)	0	0.00%

Table 9: Most Prevalent Top Contributing Factors in Crash-Related Fatalities

Contributing Factor	Frequency	Percentage
Other	10	27.03%
Under the Influence (U.I.)	8	21.62%
Failed to Yield	4	10.81%
Driver Lost Control	4	10.81%
Wrong Side of Road	4	10.81%
Not Visible (Object, Person, or Vehicle)	3	8.11%
Too Fast for Conditions	2	5.41%
Improper Backing	1	2.70%
Driver Condition	1	2.70%

Table 10: Crashes by Hour and Day of Week, 2021

Hour	Crashes							Total by Hour
	Sun	Mon	Tues	Wed	Thurs	Fri	Sat	
Midnight	16	7	8	7	4	9	16	67
1 a.m.	20	4	5	6	2	5	14	56
2 a.m.	14	5	1	6	5	7	17	55
3 a.m.	11	3	2	2	2	4	10	34
4 a.m.	9	6	2	7	5	1	11	41
5 a.m.	3	4	7	6	5	3	6	34
6 a.m.	8	14	15	14	7	17	8	83
7 a.m.	9	36	38	35	24	24	11	177
8 a.m.	8	39	51	42	46	35	19	240
9 a.m.	18	41	42	34	35	25	22	217
10 a.m.	22	57	52	47	45	41	38	302
11 a.m.	30	54	52	32	53	40	37	298
Noon	39	50	65	45	64	78	37	378
1 p.m.	36	54	60	79	49	71	54	403
2 p.m.	42	48	67	75	58	71	34	395
3 p.m.	52	54	74	57	61	79	49	426
4 p.m.	43	67	63	75	85	89	50	472
5 p.m.	31	85	97	77	79	76	38	483
6 p.m.	41	56	48	56	63	62	38	364
7 p.m.	28	34	34	41	51	35	39	262
8 p.m.	30	33	25	43	26	35	32	224
9 p.m.	30	17	18	29	20	34	40	188
10 p.m.	19	14	9	17	17	24	25	125
11 p.m.	9	11	10	9	13	25	32	109
Total Crashes	568	793	845	841	819	890	677	5,433

Table 11: Athens-Clarke County Police Traffic Enforcement

Athens-Clarke County Police Traffic Enforcement									
Year	2021	2020	2019	2018	2017	2016	2015	2014	2013
Traffic Stops	9,144	8,851	18,639	18,492	16,804	14,719	16,963	24,008	28,662
Citations by Unit									
Traffic Unit	3205	2145	5089	7493	8670	10217	14014	17697	18082
Days East	779	463	909	1148	470	982	3013	496	1939
Evening East	2072	1099	2130	1247	496	441	1238	894	1377
Morning East	694	633	1053	814	969	1314	2082	2008	2347
Days West	782	516	1795	1637	433	58	1122	1090	2226
Evening West	1559	358	3173	2398	2454	2471	1967	591	1709
Morning West	891	919	1789	2314	307	1264	698	1113	1614
Other Units	0	0	0	0	0	12	423	640	897
Total	9982	6133	15938	17051	13799	16759	24557	24529	30191

Table 12: 2021 Citations Issued by Type

2021 Citations Issued by Type	
Speeding	1967
Seatbelt	249
Child Restraints	88
No Insurance	206
Distracted/Texting	1046
Other	6416
Total	9972