

# **TSPLOST 2023 Project Proposal**

## **TIMOTHY ROAD**

### **MULTI-MODAL TRANSPORTATION CORRIDOR**

**Atlanta Highway to Macon Highway/SR 441/SR 10 Loop**

**Presented by Timothy Forward – representing residents from neighborhoods connected by Timothy Road**

# **Timothy Road Characteristics**

**Connects Atlanta Highway to Epps Bridge Parkway, Macon  
Highway, Loop 10, and SR 441**

**4.1 Miles in length**

**Speed Limit recently reduced to 35 by public demand**

**Timothy Road serves:**

**4,000 residents**

**20 diverse neighborhoods plus *49 street-facing homes***

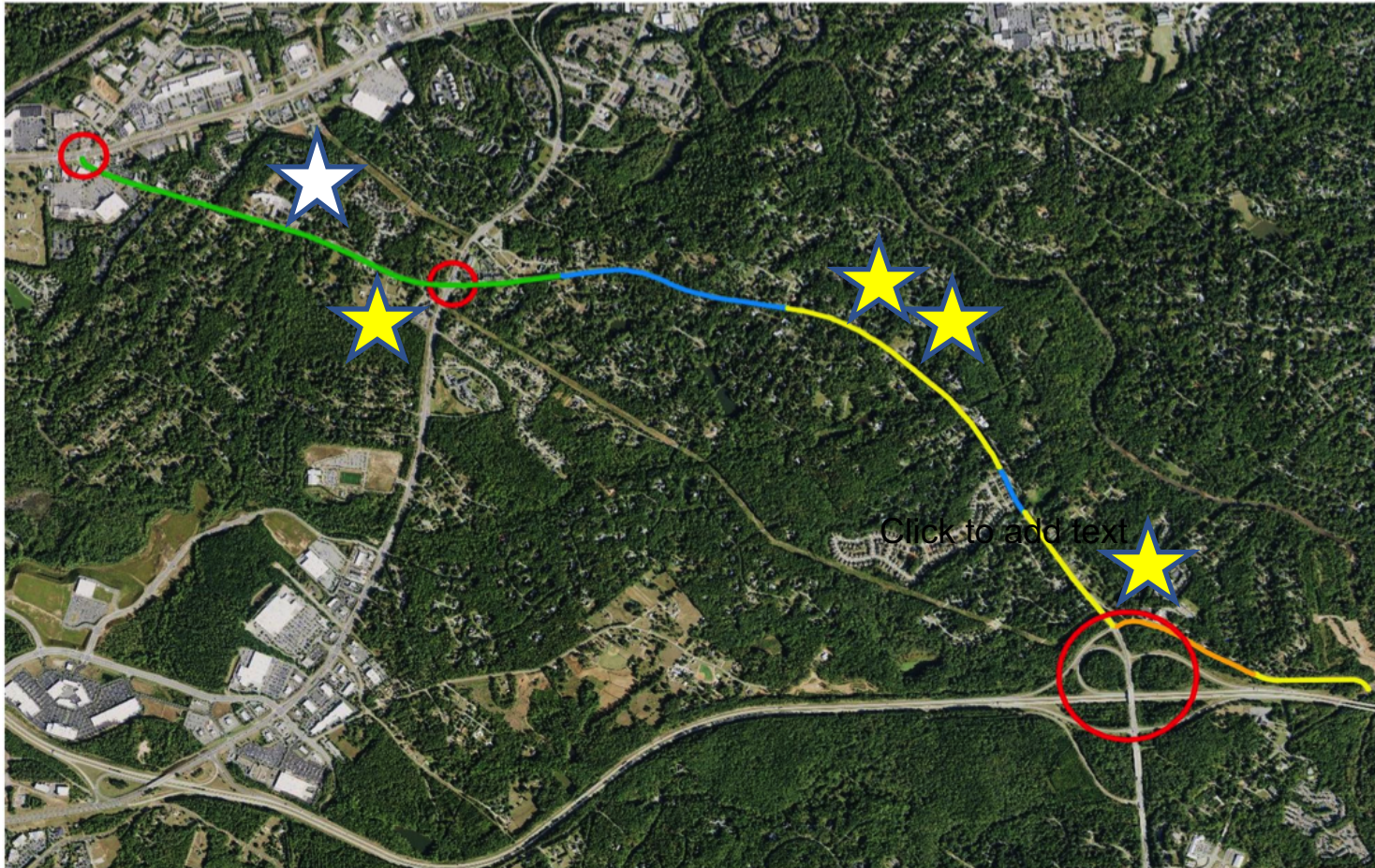
**Timothy Road Elementary School**

**4 churches including 2 Black churches of historic standing**

**2 daycare centers**

**Restaurants and shopping plazas**

# Existing sidewalk connections



Mercator Projection  
WGS84  
USNG Zone 17SKT  
CALTPO



School



Church

**Transit stops and goat  
path (no sidewalk)**

**Sidewalk both sides of  
Timothy Road  
from Atlanta Highway to  
Epps Bridge Parkway**

**No sidewalk**

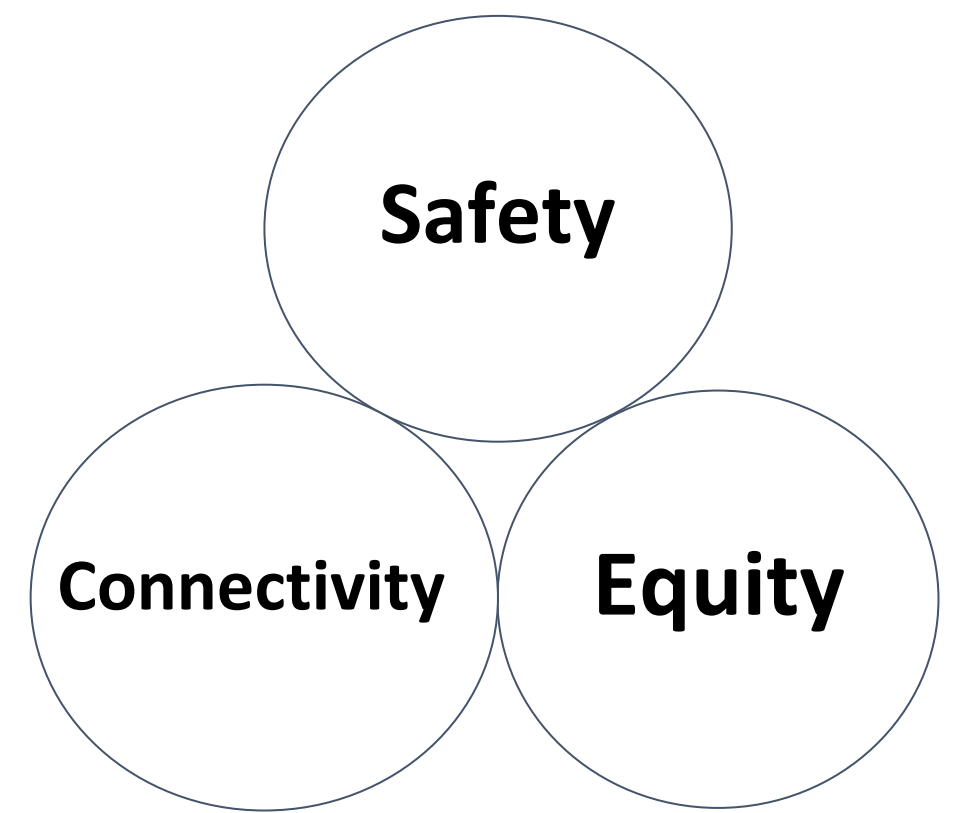
**Sidewalk one or the other  
side of Timothy Road**

**Major Intersection**



## Timothy Road Problems:

- Long stretches are **unsafe for cars, pedestrians and bikes**
- **1,434** crashes from 2013-2021 = one crash every other day
- 426 injuries and 2 fatalities during this time
- More than half of Timothy residents have no access to Transit
- Many neighborhoods are 100% car dependent
- Lack of pedestrian and bicycle mobility negatively impacts social well-being for many neighborhoods



**Funding Estimate:**

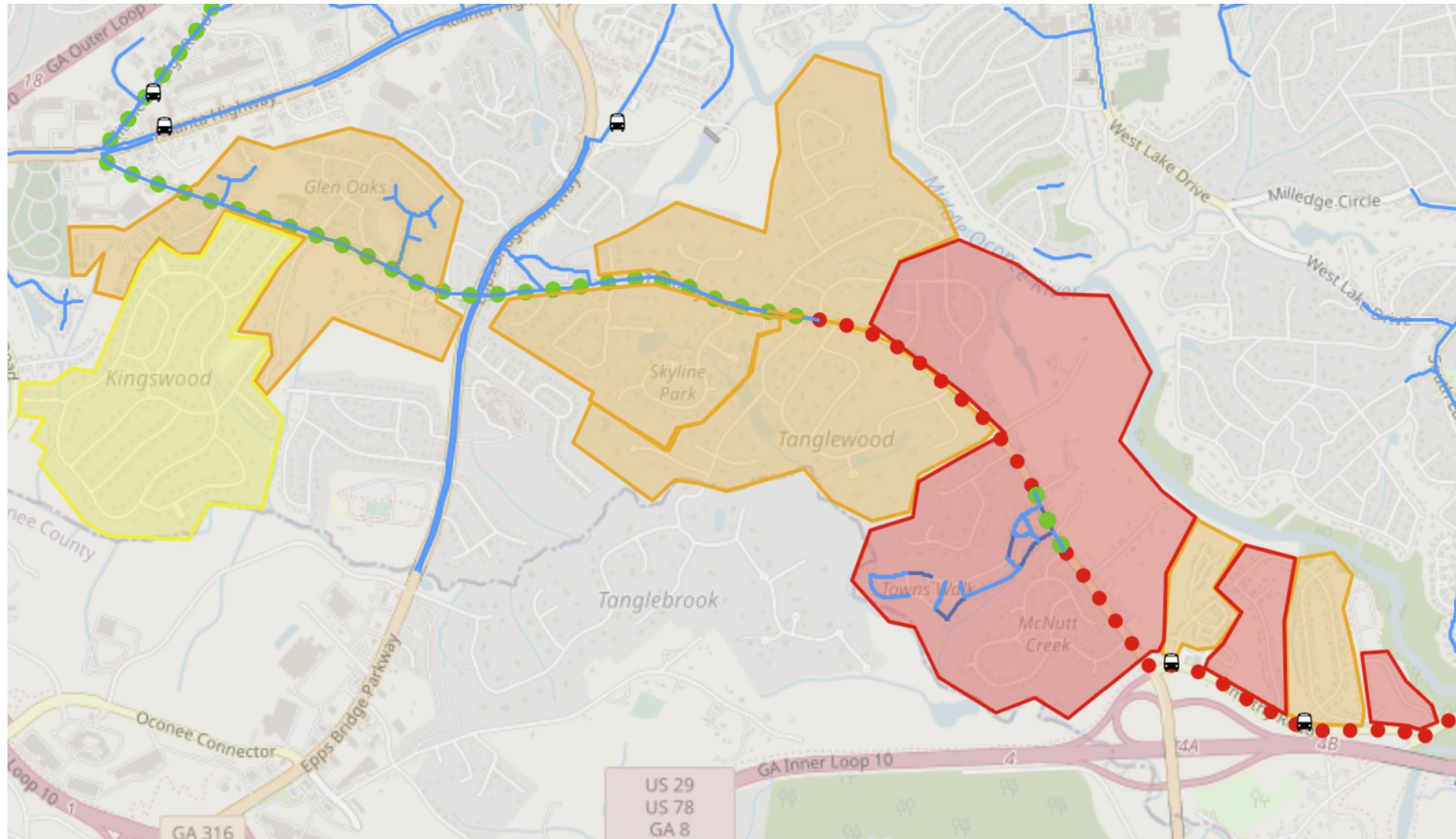
**\$23 million**

## Timothy Forward Proposed Solutions:

- 4.1 miles of **sidewalks** on one side of Timothy Road
- 4.1 miles of **multi-use path** on the other side
- **Safety** improvements at the 3 **major intersections**
- **Gateway Roundabout** at the southern entry to Athens-Clarke County



## Timothy Road Neighborhoods are isolated and confined by lack of sidewalks and bike lanes



Number of sidewalks or safe bike routes that connect highlighted region to alternative transportation.

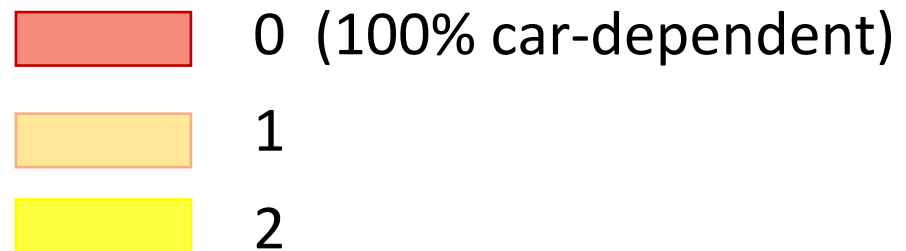
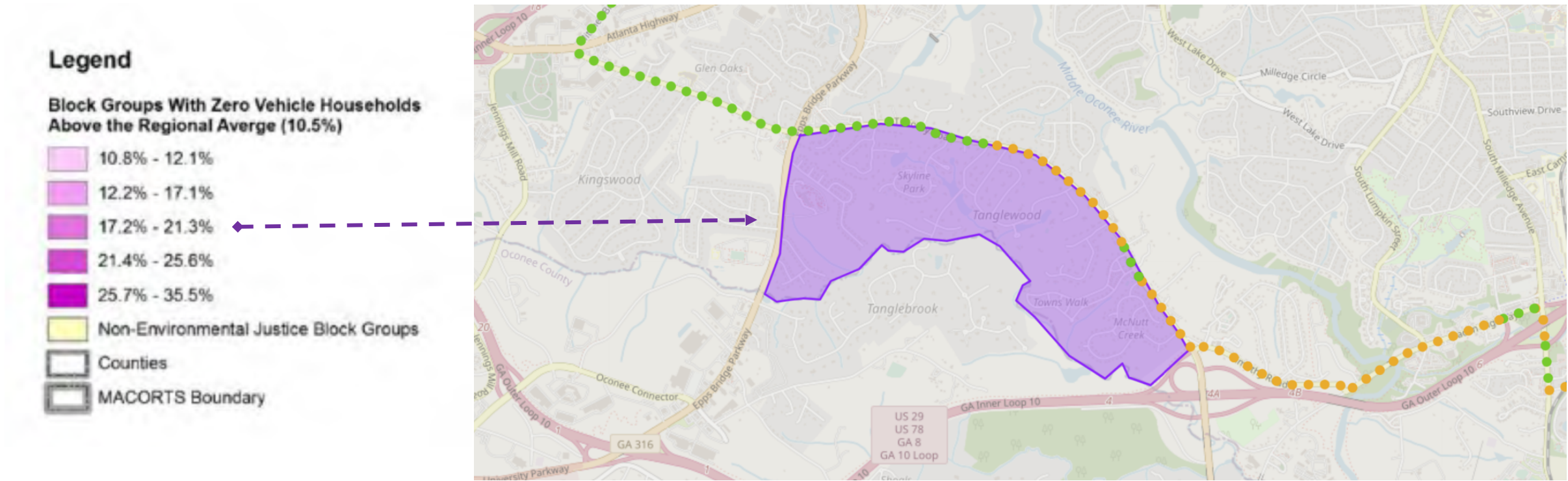


FIGURE 13. ZERO VEHICLE HOUSEHOLDS ABOVE REGIONAL AVERAGE



# Out of 25 projects on Atlanta Highway Survey, Bike/Ped were most popular

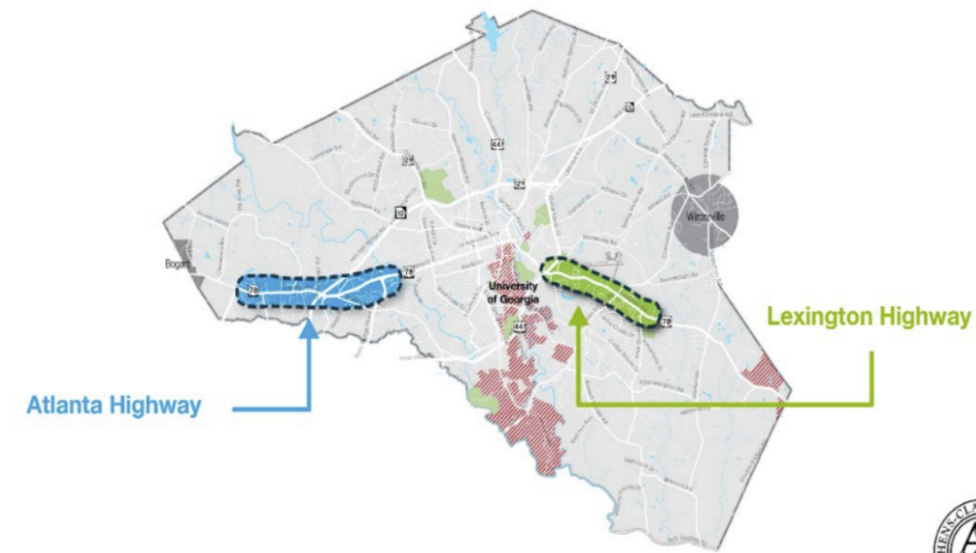
An estimated 307 individuals either responded to the survey or provided a comment for more than 950 responses on the Atlanta Highway Corridor projects. Only 14% of all Atlanta Highway respondents provided a zip code. Of the individuals who provided a zip code, almost 80% reside in the 30606 zip code.

Although the sample pool is small, it is worth noting that the highest star-rated projects across all project categories were sidewalk or trail improvements, with the top four highest-rated projects being proposed along Timothy Road. Due to redundancy in projects A21, A22, A25, and A26, it is recommended that the weighted rank sum is used for further prioritization—the weighted rank sum indicated a preference for sidewalks over trails.

For Atlanta Highway Bike/Pedestrian projects, approximately 80% of comments were supportive/positive and 20% were not supportive/negative. Comments received included:

Top Four TSPLOST 2018 Atlanta Highway User Group Projects

Project ID	Project Description	Average Star Rating
A21	Timothy Road from Epps Bridge Parkway to State Route 10 Loop On-ramp (sidewalk)	4.45
A26	Timothy Road from State Route 10 Loop/On-ramp to Old Macon Highway (trail)	4.41
A22	Timothy Road from State Route 10 Loop/On-ramp to Old Macon Highway (sidewalk)	4.26
A25	Timothy Road from Epps Bridge Parkway to State Route 10 Loop On-ramp (trail)	4.25





# Timothy Road as a Multi-Modal Transportation Corridor





# Timothy Road at Loop 10/SR 441: roundabout treatment

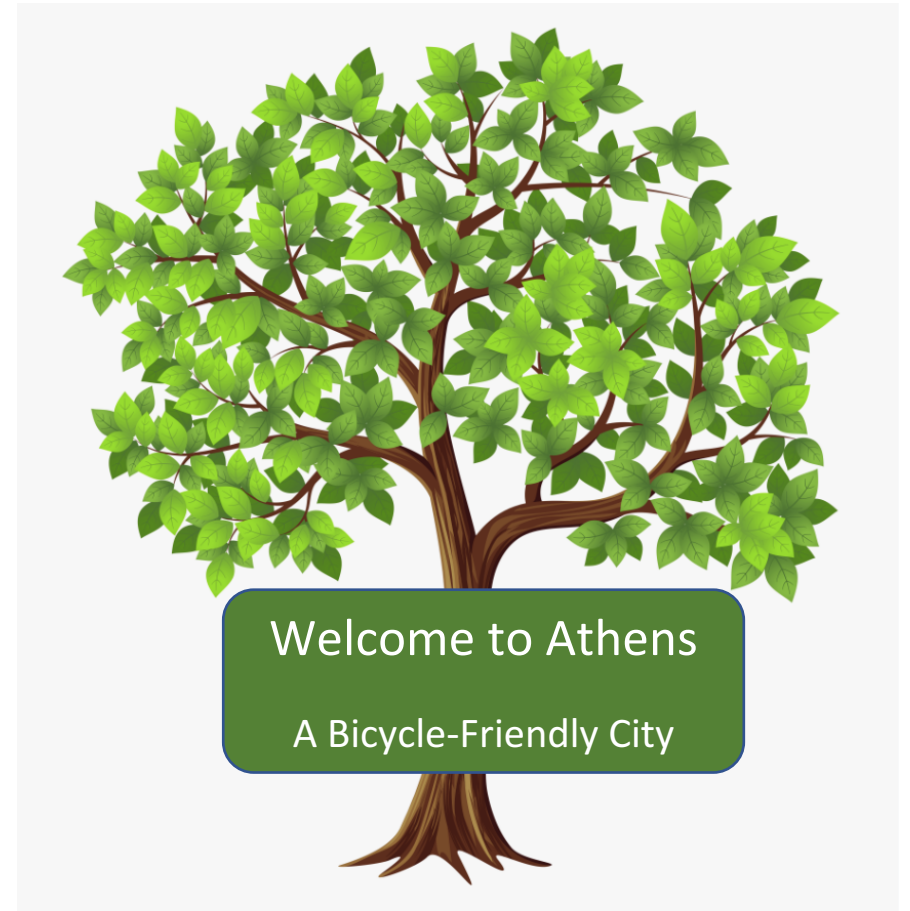
The southern entrance to Athens is the scene of many crashes

*AND*

An opportunity to create a welcome gateway to Athens-Clarke County



Imagine:



# The Timothy Road Multi-Modal Transportation Corridor checks all the TSPLOST 2023 boxes:

## Equity

This project will close the equity gap by providing safe pedestrian and bicycle access, for neighborhoods that are completely car dependent, with connections to commercial, recreational, educational and other resources, for the **many diverse neighborhoods** along the Timothy Road corridor.

## Social Well-Being

Additionally, The TR multi-modal transportation facilities will improve **social well-being** by connecting neighborhoods, **reduce vehicular pollution** and improve residents access to employment and shopping hubs.

## Bottom Line x 3

**The triple bottom line:** this project benefits all users of Timothy Road, improves the function and safety of the corridor for diverse neighborhoods, supports economic development and **upward mobility of residents**, and promotes social well-being by **connecting isolated neighborhoods** and street-facing homes..

# Timothy Road Multi-Modal Transportation Corridor Meets 11 TSPLOST 2023 Program Selection Criteria:

- ☒ Promotes the Goal of Improving Equitability of Capital Improvements throughout the Community
- ☒ Protects the community's Existing Transportation Infrastructure Investments
- ☐ Reduces Pavement Maintenance deficit
- ☒ Promotes the Upgrade and Continued Use of Alternative Transportation Facilities
- ☒ Promotes Increased Access to existing public facilities
- ☒ Promotes Increased Usage of the Transit System, including improving Pedestrian access to Transit Facilities
- ☐ Increases Capital for Transit services or expands the Transit System
- ☒ Maintains or Improves Air Quality
- ☒ Reduces Vehicle Miles Traveled and Traffic Congestion
- ☒ Reduces time spent Traveling in Vehicles
- ☒ Continues TSPLOST 2018 Corridor Improvements or transportation related safety improvements
- ☒ Promotes Health and Safety by increasing access to Bike and Pedestrian infrastructure
- ☒ Continues Sidewalk & Multi-Use Trail Construction
- ☐ Implements components of an updated Greenway Network Plan





Thank you for your time.