

Project No. 3

SMOKEY ROAD PEDESTRIAN IMPROVEMENTS

TSPLOST 2023

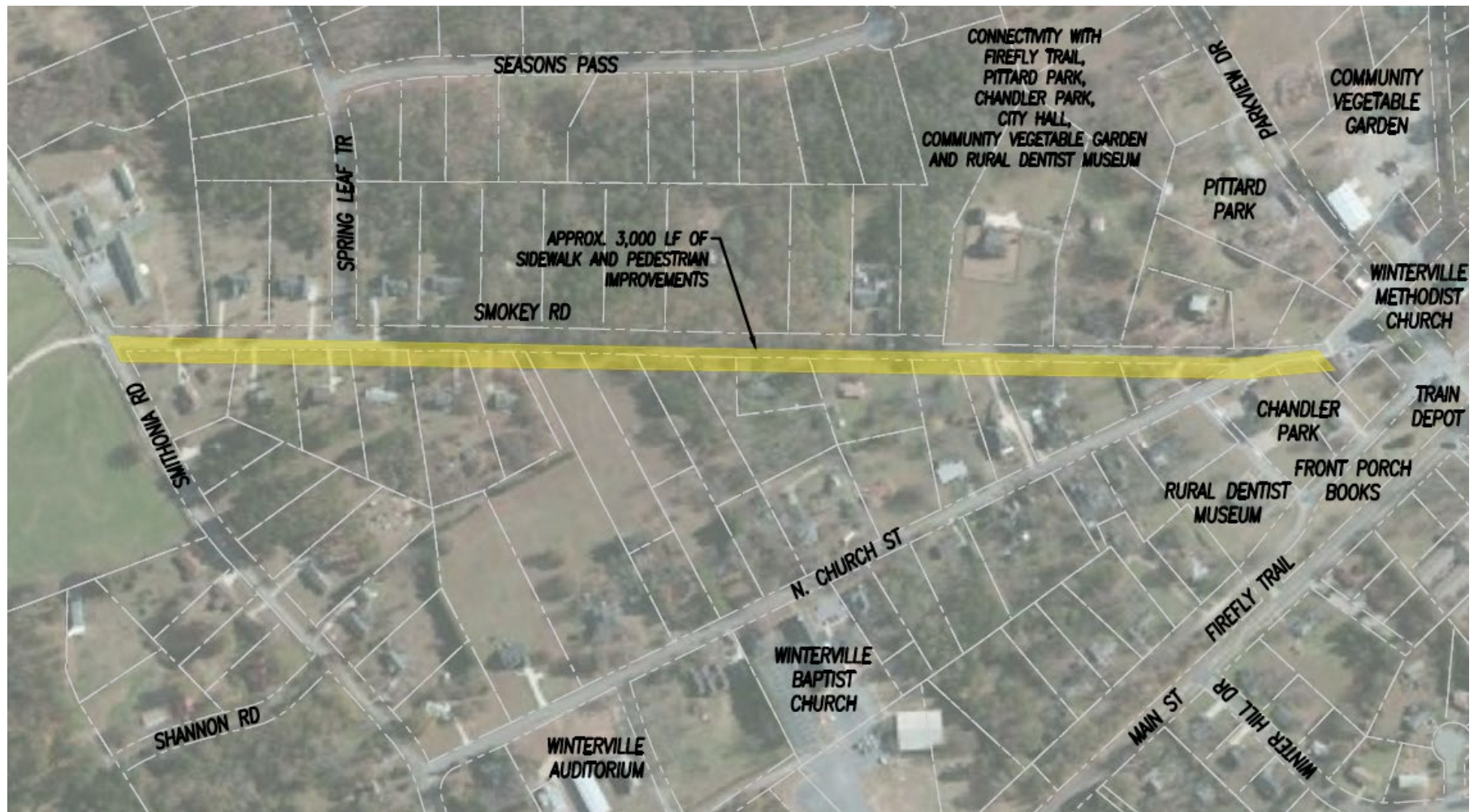
WINTERVILLE
georgia

Project Goals

- Provide pedestrian access along Smokey Rd to improve access to users of the Firefly Trail, Pittard Park, Chandler Park, City Hall, the Police Station, Community Vegetable Garden the center of the Winterville Community, and increase pedestrian opportunities throughout the City of Winterville.
- Provide alternative modes of transportation for citizens with limited mobility, those without motor vehicles or drivers license.

✓ **Improves equitability of capital improvement throughout the community**

Project Location



Project Scope

- Install approximately 3,000 LF of 5' sidewalk along the east side of Smokey Road, from N. Church Street to Smithonia Road, including required drainage improvements, curb and gutter, driveway improvements where required, and accessibility ramps.
- Provide crosswalks and other pedestrian safety measures where necessary to create connectivity to public facilities

Access to Public Facilities

- ❖ Firefly Trail
- ❖ Pittard Park
- ❖ Chandler Park
- ❖ Winterville City Hall
- ❖ Community Vegetable Garden
- ❖ Train Depot
- ❖ Rural Dentist Museum
- ❖ Winterville Methodist Church



Interconnectivity to Alternative Transportation Facilities

Sidewalk along Smokey Road will provide interconnectivity to the Firefly Trail, providing promoting alternative modes of transportation and a vital bike and pedestrian link from the City of Winterville, throughout the eastern side of the county and into downtown Athens.

- ✓ **Improves Air Quality**
- ✓ **Reduces VMT and Traffic Congestion**
- ✓ **Reduces time spent traveling in vehicles**
- ✓ **Promotes Health and Safety**
- ✓ **Continues Sidewalk and Multi-Use Trail Construction**



In what specific ways will this project “Close the Equity Gap” in Athens-Clarke County, by improving the Equitability of Capital Improvements throughout the entire community?

- The City of Winterville has received limited investment of TSPLOST dollars in past TSPLOST projects.
- The City of Winterville is growing in population, and has become a place for members of our community looking for a more affordable and less urban housing opportunities.

How will this project address one or more of the Mayor and Commission approved Strategic Commitments and Project Selection Criteria?

- **Promotes the Goal of Improving Equitability if Capital Improvements throughout the Community** The Smokey Rd Pedestrian Improvement Project improves equitable use of capital improvements by providing alternative modes of transportation, both bike and pedestrian, by providing sidewalks for citizens that without alternative modes would not otherwise be able to utilize the transportation system. For example, those citizens who are unable to operate a motor vehicle because of other impairments, those citizens who choose or are unable to operate a motor vehicle, younger citizens who are not licensed to operate a motor vehicle, or other opportunities for alternative modes of transportation. These pedestrian improvements offer connectivity to the city center, Pittard Park, Chandler Park, City Hall, the community vegetable garden and the Firefly Trail.
- **Promotes the upgrade and continued use of Alternative Modes of Transportation.** The Smokey Rd Pedestrian Improvement Project upgrades and continues the use of Alternative Transportation Facilities by constructing sidewalks for pedestrian use that connect to the Firefly Trail that provide more opportunities for users to connect to the Athens-Clarke County Bike and Pedestrian, Trails and Greenways network.
- **Promotes increased access to existing public facilities.** The Smokey Rd Pedestrian Improvement Project connects to the city center, Pittard Park, Chandler Park, City Hall, the Rural Dentist Museum, Front Porch Books and music venue, the community vegetable garden and the Firefly Trail.
- **Maintains or improves air quality.** The Smokey Rd Pedestrian Improvement Project will provide opportunities for users to access grocery and basic shopping and community centers without the use of a vehicle. Additional interconnectivity to the Firefly Trail will provide unencumbered access for bike and pedestrian users to reach downtown Athens without the use of a motor vehicle.

How will this project address one or more of the Mayor and Commission approved Strategic Commitments and Project Selection Criteria? (Continued)

- **Reduces vehicle miles traveled and traffic congestion.** The Smokey Rd Pedestrian Improvement Project will provide opportunities for users to access grocery and basic shopping and community centers without the use of a vehicle. Additional interconnectivity to the Firefly Trail will provide unencumbered access for bike and pedestrian users to reach downtown Athens without the use of a motor vehicle.
- **Reduces time spent traveling in vehicles.** The Smokey Rd Pedestrian Improvement Project will provide opportunities for users to access grocery and basic shopping and community centers without the use of a vehicle. Additional interconnectivity to the Firefly Trail will provide unencumbered access for bike and pedestrian users to reach downtown Athens without the use of a motor vehicle.
- **Promotes increased access to existing public facilities.** The Smithonia Rd Pedestrian Improvement Project connects users to grocery and basic shopping opportunities, community centers such as the Winterville Auditorium, Winterville Community, the Center Georgia Youth Science & Technology Center (GYSTC) and the North East Georgia RESA Center.
- **Promotes Health and Safety.** The Smokey Rd Pedestrian Improvement Project will provide greater opportunities for active exercise and walking throughout the City of Winterville and the Athens-Clarke County community through direct access to the Firefly Trail. The sidewalk will connect to the playground at Pittard Park, the communities vegetable garden, Chandler Park, and Front Porch Books and music venue.
- **Continues Sidewalk & Multi-Use Trail construction.** The Smokey Rd Pedestrian Improvement Project broadens the web and interconnectivity of public sidewalks and multi-use trails through its connection with the Firefly Trail and existing sidewalk network within the City of Winterville.

What aspects of this project will focus on improving the “Triple Bottom Line” (Impact on Economic Prosperity, Social Well-being, and the Environment)?

Economic Prosperity

- Supports other capital expenses needed to achieve needs for future economic development, transportation and infrastructure elements within the City of Winterville

Social Well-Being

- Proposed sidewalks provide greater pedestrian connectivity for existing workforce housing.
- Improves equitable access to public facilities, goods and services for residents along Smokey Road

Environment

- Supports alternative modes of transportation by providing multi-modal access to community centers.



Thank you

Q&A