

# JEOPARDY!

**WATER  
RECLAMATION**

**FLUSH TO  
FINISH**

**TREATMENT  
CLOGS**

**REVERT TO  
THE RIVER**

**BEYOND THE  
WATER**

**CONSERVATION  
CORNER**

**\$100**

**\$100**

**\$100**

**\$100**

**\$100**

**\$200**

**\$200**

**\$200**

**\$200**

**\$200**

**\$300**

**\$300**

**\$300**

**\$300**

**\$300**

**\$400**

**\$400**

**\$400**

**\$400**

**\$400**

**\$500**

**\$500**

**\$500**

**\$500**

**\$500**

## FLUSH TO FINISH - \$100 Question

The water that enters the reclamation facility is called \_\_\_\_\_, while water that leaves the facility is called \_\_\_\_\_:

Click to see answer



**FLUSH TO FINISH - \$100 Answer**

**Influent Water,  
Effluent Water**



[Click to return to Jeopardy Board](#)



## FLUSH TO FINISH - \$200 Question

One of the first stops on the reclamation journey where screens capture large items is:

Click to see answer





# FLUSH TO FINISH - \$200 Answer

Headworks - where band screens capture large materials like paper and trash and the grit system removes small particles such as sand and clay



[Click to return to Jeopardy Board](#)



## FLUSH TO FINISH - \$300 Question

In the \_\_\_\_\_ basin, oxygen is mixed with water to make microscopic organisms grow.

Click to see answer





# FLUSH TO FINISH - \$300 Answer

## Aeration Basin



[Click to return to Jeopardy Board](#)



## FLUSH TO FINISH - \$400 Question

The place where the microorganisms settle to the bottom to create sludge. At the top of these tanks, water overflows into another chamber for disinfection.

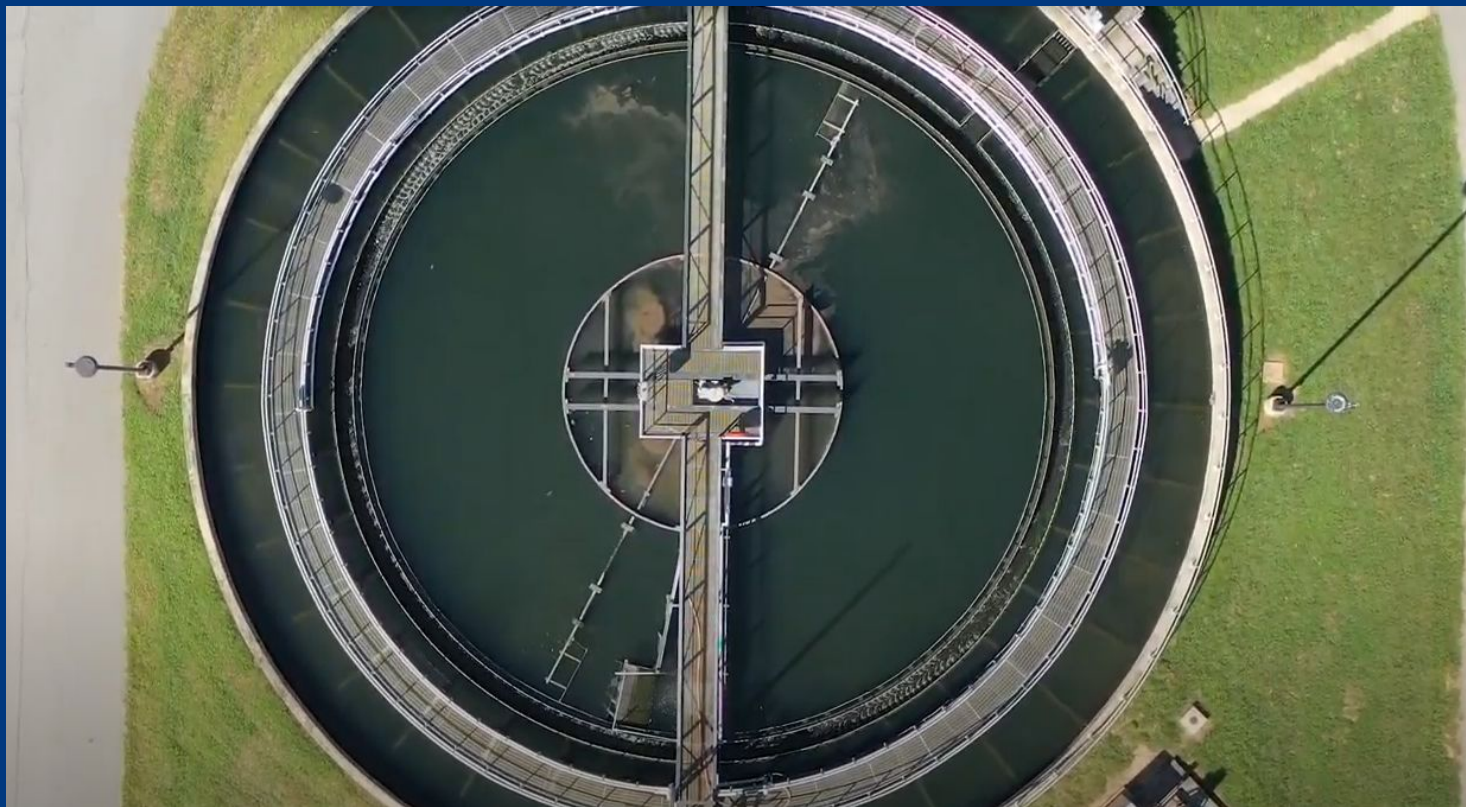
Click to see answer





# FLUSH TO FINISH - \$400 Answer

## Clarifying Basin



[Click to return to Jeopardy Board](#)



## FLUSH TO FINISH - \$500 Question

This light sterilizes any remaining bacteria in the water.

Click to see answer





# FLUSH TO FINISH - \$500 Answer

## Ultraviolet Light (UV)



[Click to return to Jeopardy Board](#)





## TREATMENT CLOGS - \$100 Question

You should never put this down your kitchen drain. It may be left in the pan after cooking bacon...

Click to see answer



TREATMENT CLOGS - \$100 Answer

Fats, Oils, and Grease (FOG)



[Click to return to Jeopardy Board](#)



## TREATMENT CLOGS - \$200 Question

This grows from your head,  
but can end up clogging a  
drain.

Click to see answer





# TREATMENT CLOGS - \$200 Answer

## Hair



[Click to return to Jeopardy Board](#)



## TREATMENT CLOGS - \$300 Question

It's the **ONLY** paper product that should ever be flushed.

Click to see answer



TREATMENT CLOGS - \$300 Answer

Toilet paper (No tissues or  
wipes!)



[Click to return to Jeopardy Board](#)





## TREATMENT CLOGS - \$400 Question

We call this a \_\_\_\_\_, which is also a word for something you clean the floor with, and happens when trash and other items get flushed.

Click to see answer



# TREATMENT CLOGS - \$400 Answer

## A mophead (yuck!)



[Click to return to Jeopardy Board](#)



# TREATMENT CLOGS - \$500 Question



The four P's of flushing are:

Click to see answer





# TREATMENT CLOGS - \$500 Answer

Poo , Pee, Paper (toilet paper only), and Puke 

[Click to return to Jeopardy Board](#)



## Question

The water that has been used and flushed down your drain is referred to as:

Click to see answer



**REVERT TO THE RIVER - \$100 Answer**

**Collected water or  
Influent water**

[Click to return to Jeopardy Board](#)





## Question

Billions of \_\_\_\_\_ are responsible for removing pollutants from our used water.

Click to see answer



REVERT TO THE RIVER - \$200 Answer

Microorganisms (like this water bear!)



[Click to return to Jeopardy Board](#)



## Question

We add oxygen to the water before it is returned to the river for an important reason. Do you know why?

Click to see answer





# REVERT TO THE RIVER - \$300 Answer

To help keep our rivers healthy,  
because aquatic life needs  
oxygen to thrive



[Click to return to Jeopardy Board](#)



REVERT TO THE RIVER - \$400

## Question

Cleaning and treating  
collected water helps to  
keep our local waterways  
\_\_\_\_\_.

Click to see answer



# REVERT TO THE RIVER - \$400 Answer

## Healthy and replenished



[Click to return to Jeopardy Board](#)





REVERT TO THE RIVER - \$500

## Question

How does water flow through the facility back to the river?

Click to see answer



**REVERT TO THE RIVER - \$500 Answer**

**With gravity! (downhill)**

[Click to return to Jeopardy Board](#)



# BEYOND THE WATER - \$100 Question

How many reclamation facilities are there in Athens?

Click to see answer





## BEYOND THE WATER - \$100 Answer

Three: the Cedar Creek,  
Middle Oconee, and North  
Oconee facilities

[Click to return to Jeopardy Board](#)



## BEYOND THE WATER - \$200 Question

How many days per week are  
our facilities being  
monitored by an operator?

Click to see answer



**BEYOND THE WATER - \$200 Answer**  
**Everyday. Operators work**  
**24/7/365!**



[Click to return to Jeopardy Board](#)





# BEYOND THE WATER - \$300 Question

True or False:  
“Flushable” wipes are safe  
to flush down the toilet.

Click to see answer



# BEYOND THE WATER - \$300 Answer

False! Only Pee, Poo, Puke,  
and Paper (toilet paper!)

[Click to return to Jeopardy Board](#)



## BEYOND THE WATER - \$400 Question

True or False: Everything you flush ends up at the water treatment facility.

Click to see answer





**BEYOND THE WATER - \$400 Answer**

**True!**

[Click to return to Jeopardy Board](#)



## BEYOND THE WATER - \$500 Question

True or False: Food scraps should be put down the drain.

Click to see answer



**BEYOND THE WATER - \$500 Answer**

**False! Food scraps should be composted or tossed in the trash.**



[Click to return to Jeopardy Board](#)





## Conservation corner - \$100 Question

The term for the careful and wise use of water (and other resources!)

Click to see answer



# Conservation corner - \$100 Answer

## Conservation



[Click to return to Jeopardy Board](#)



## Conservation corner - \$200 Question

The biosolids can be mixed with leaf and limb at the landfill to produce...

Click to see answer





# Conservation corner - \$200 Answer

## Compost



[Click to return to Jeopardy Board](#)



## Conservation corner - \$300 Question

The EPA label you should look for on products that conserve water is called:

[Click to see answer](#)



Conservation corner - \$300 Answer

WaterSense



[Click to return to Jeopardy Board](#)





## Conservation corner - \$400 Question

What is one way you can  
conserve water?

Click to see answer



# Conservation corner - \$400 Answer

- Turn off the tap when brushing your teeth
- Wash full loads of laundry and dishes
  - Check toilets for leaks
  - Check faucets for drips
  - Take 5 minute showers



[Click to return to Jeopardy Board](#)



## Conservation corner - \$500 Question

Instead of pouring fats, oils,  
or grease down the drain,  
you can...

Click to see answer



## Conservation corner - \$500 Answer

Take them the Reclamation  
Facilities for recycling.

[Click to return to Jeopardy Board](#)





FINAL

# JEOPARDY!

Topic: The Water Industry  
Careers

Click to see question



## Final Jeopardy Question

What does a water operator  
do at the reclamation  
facility?

Click to see answer



## Final Jeopardy Answer

A water operator works to ensure environmentally sound wastewater treatment for the environment and community.

[Click to return to Jeopardy Board](#)

