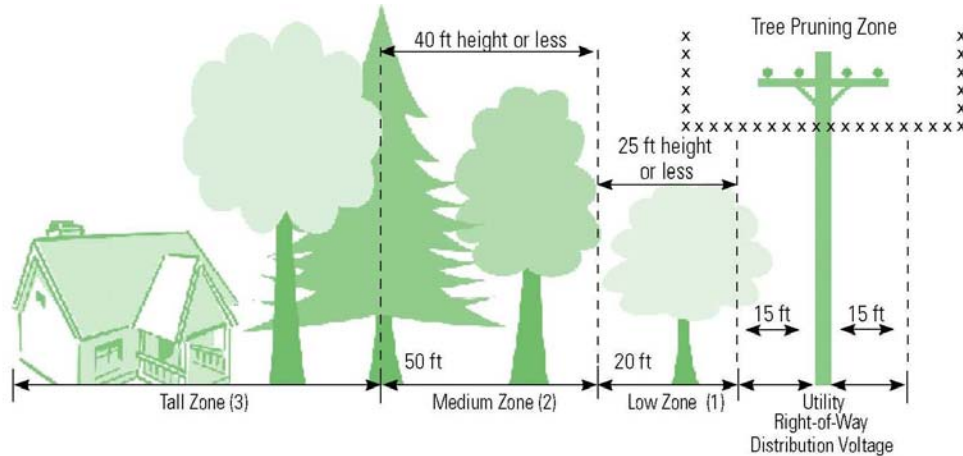


Tree Planting Near Utility Lines

When planting a tree, the Georgia Power Company wants you to consider where the tree will be planted in relation to the overhead utility lines. It is often easy to underestimate the size of a tree when planting a young sapling, and you need to ensure enough room is available to support a fully-developed canopy and roots when a tree reaches its mature size. The Athens-Clarke County Tree Species List can help you determine the mature size of the tree you are planting.



In order to maintain natural form, larger trees must be located a safe distance from overhead lines.

If tall trees are planted under utility lines, they will require frequent pruning to maintain a safe distance from the lines as Mother Nature can be a factor. Storms can cause large trees to topple onto power lines, and wind causes limbs to break or brush against the energized lines. Tree tissues are scorched and damaged when leaves and small limbs reach an uninsulated electric line. Also, trees are capable of conducting electricity when larger limbs and branches come into contact with electric lines. Once contact is made, the electricity travels down to the ground on the outside of the tree. This event disrupts electric service and is capable of injuring or killing people near the tree.

Acceptable Trees to Be Planted Under Overhead Electric Lines			
Buckeye, Bottle Brush	Fringetree	Magnolia, Star	Snowbell
Chastetree	Fringetree, Chinese	Maple, Japanese	Waxmyrtle
Crabapple, Flowering	Holly	Persimmon, Japanese	Witchhazel
Crapemyrtle	Loropetalum	Serviceberry	Yaupon
Dogwood	Magnolia, Saucer	Smoketree, Common	Yew, Southern

You should never attempt to prune any trees or vegetation growing near overhead utility lines. Only a well-trained line clearance specialist should work around power lines. If a person or object comes too close to an energized line, then it is possible for the electricity to arc to that person even though he or she might be several feet from the line. This event is nearly always fatal. Please contact your local utility forester if you are concerned about the vegetation around your lines.



GA Power has committed to follow the national standards to use directional and V-type pruning to maintain public safety and tree health and structure.

At Georgia Power, we understand that there are situations where trees will need to coexist with overhead power lines and have provided a “Plant the Right Tree in the Right Place” guide to help educate the public about planting trees near power lines and proper tree planting decisions. We are committed to protect trees while providing reliable electric service.

Submitted By:
Clay Szoke
Right-of-way Forester
Georgia Power