



Athens-Clarke County

Stormwater Utility Open House

August 16, 2018



Agenda

1. Introductions
2. Stormwater Utility Background
3. Level and Extent of Service Considerations
4. Survey Results
5. Interactive Stations

Why Are We Here?

1. Introduce consulting team that is performing an assessment of the ACC Stormwater Utility
2. Provide context for the current study
3. Solicit input from the public related to expectations for stormwater management within the community



Stormwater Utility Overview

What Is Stormwater?



Image courtesy of City of Alexandria, VA

Why Does ACC Need to Manage Stormwater?

Flood Control / Property Protection

- Maintenance of the stormwater system protects individual and personal property
- Ensures roadways are accessible

Water Quality

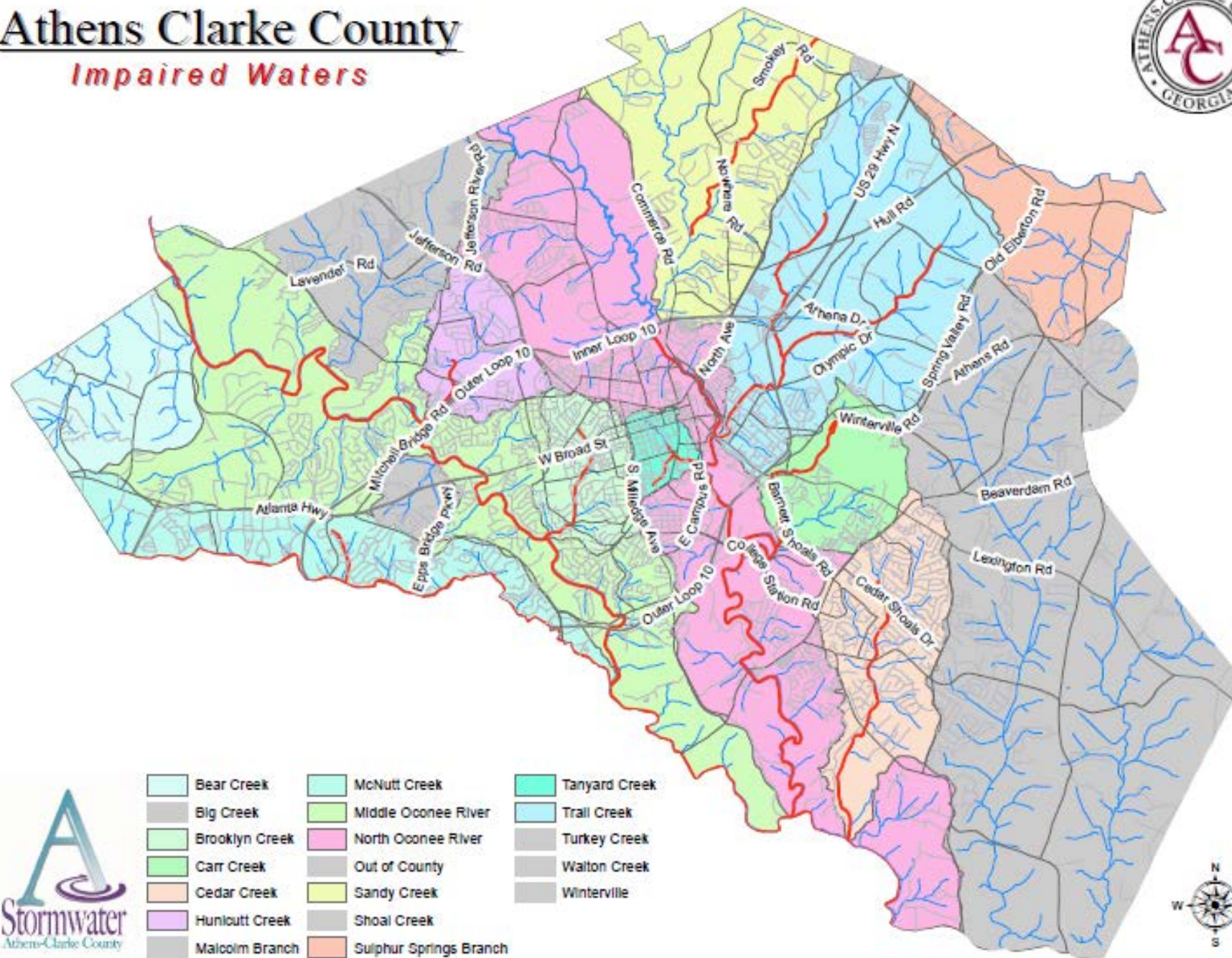
- Stormwater management is essential to protect the beauty of the natural environment (local water ways)

Regulatory Requirements

- The ACC's stormwater system discharges are subject to Clean Water Act
- ACC is required perform stormwater management activities to comply with stormwater discharge permit

Athens Clarke County

Impaired Waters

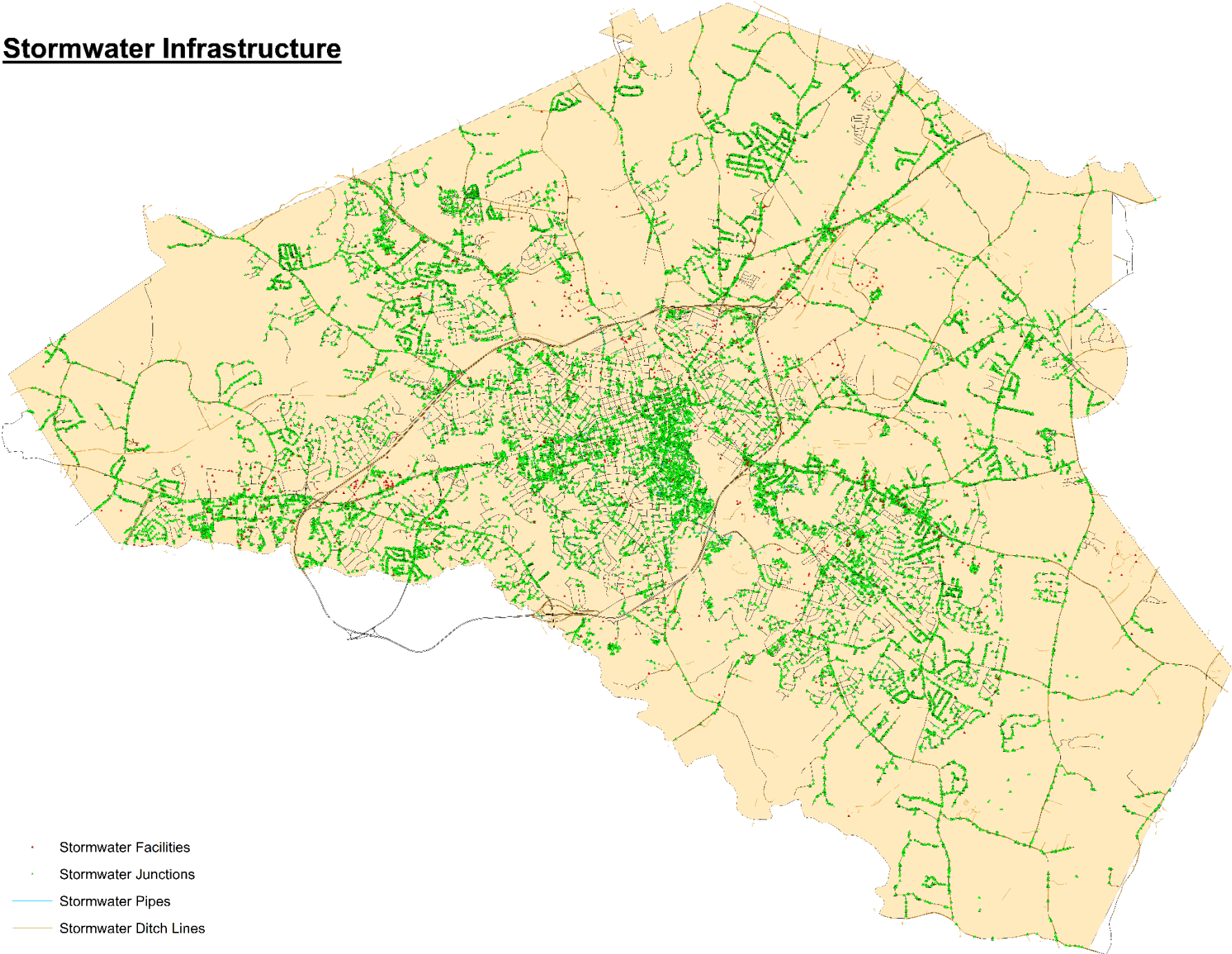


ACC's Stormwater System

ACC manages an extensive system consisting of:

- 355 miles of stormwater mains
- 13,000 catch basins / inlets
- 4,000 manholes
- 653 stormwater outfalls
- 116 public stormwater facilities
- 320 miles of roadside ditches

Stormwater Infrastructure



Stormwater Utility Responsibilities

- Operation and Maintenance of the Stormwater System
 - Maintenance of lines, catch basins, ponds, bioretention facilities
 - Monitoring of impaired waters
 - Routine inspections of stormwater infrastructure
 - Billing administration / data management
- Regulatory Compliance
 - Public Education and Outreach and Public Participation
 - Illicit Discharge Detection and Elimination
 - Construction and Post Construction Site Erosion Control

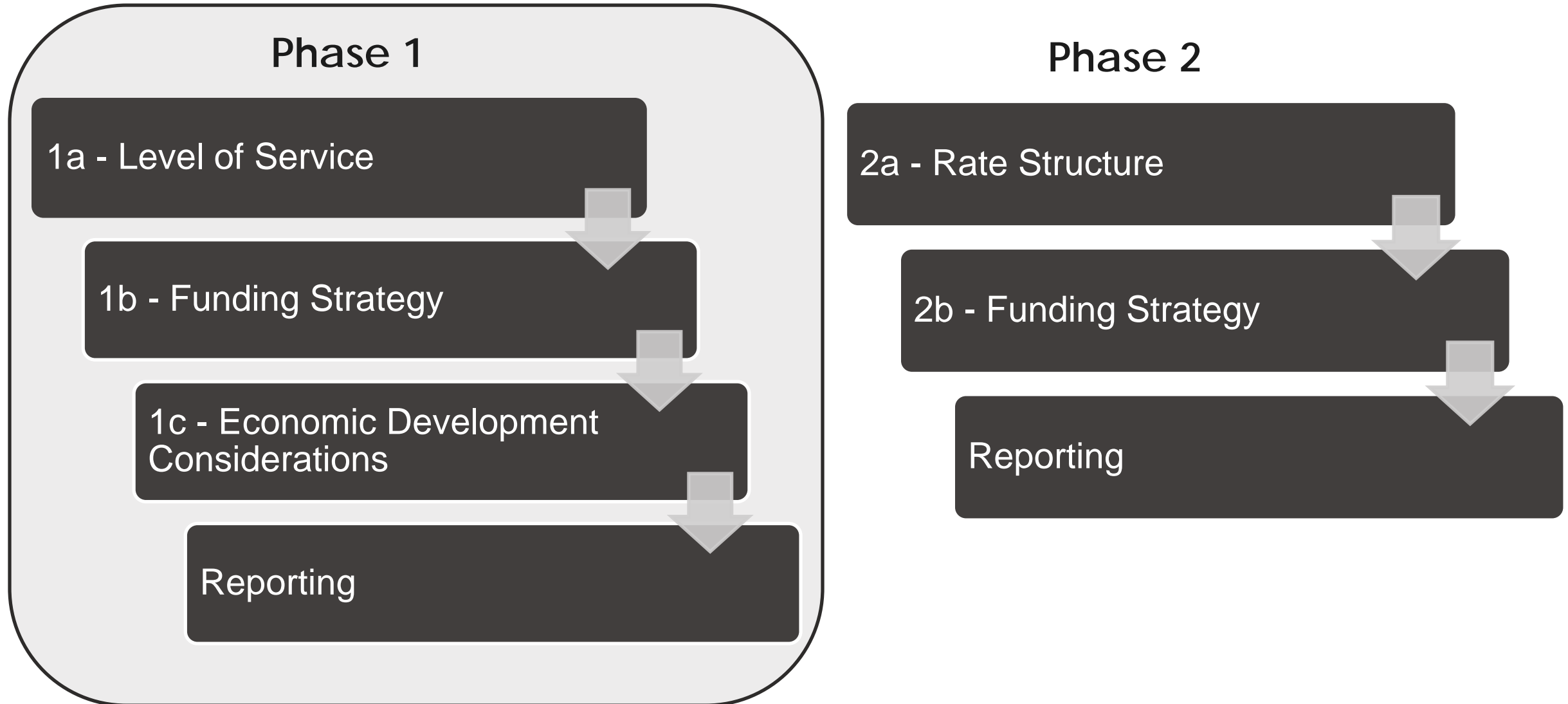
Challenges facing the ACC SW Utility

- Aging Infrastructure
 - Significant capital needs to replace existing pipes
- Need for System Improvements
 - Address flooding
 - Meet changing needs of the community / increased development
- Expanding Regulatory Requirements
- Community Level of Service Expectations

Utility Background

- Stormwater utility formed in 2005
 - Established stormwater fee
 - Millage rate reduced
- Stormwater utility level of service examined when utility was established
 - Considered three levels of service
 - Level A: Minimal to meet just regulatory requirements
 - Level B: Regulatory requirements plus maintenance of publicly owned stormwater management
 - Level C: A&B plus expanded to included priority private stormwater management facilities
- Level B was selected and has defined level of service provided over past 13 years

Overview of Current Study





Level and Extent of
Service

Two Key Questions

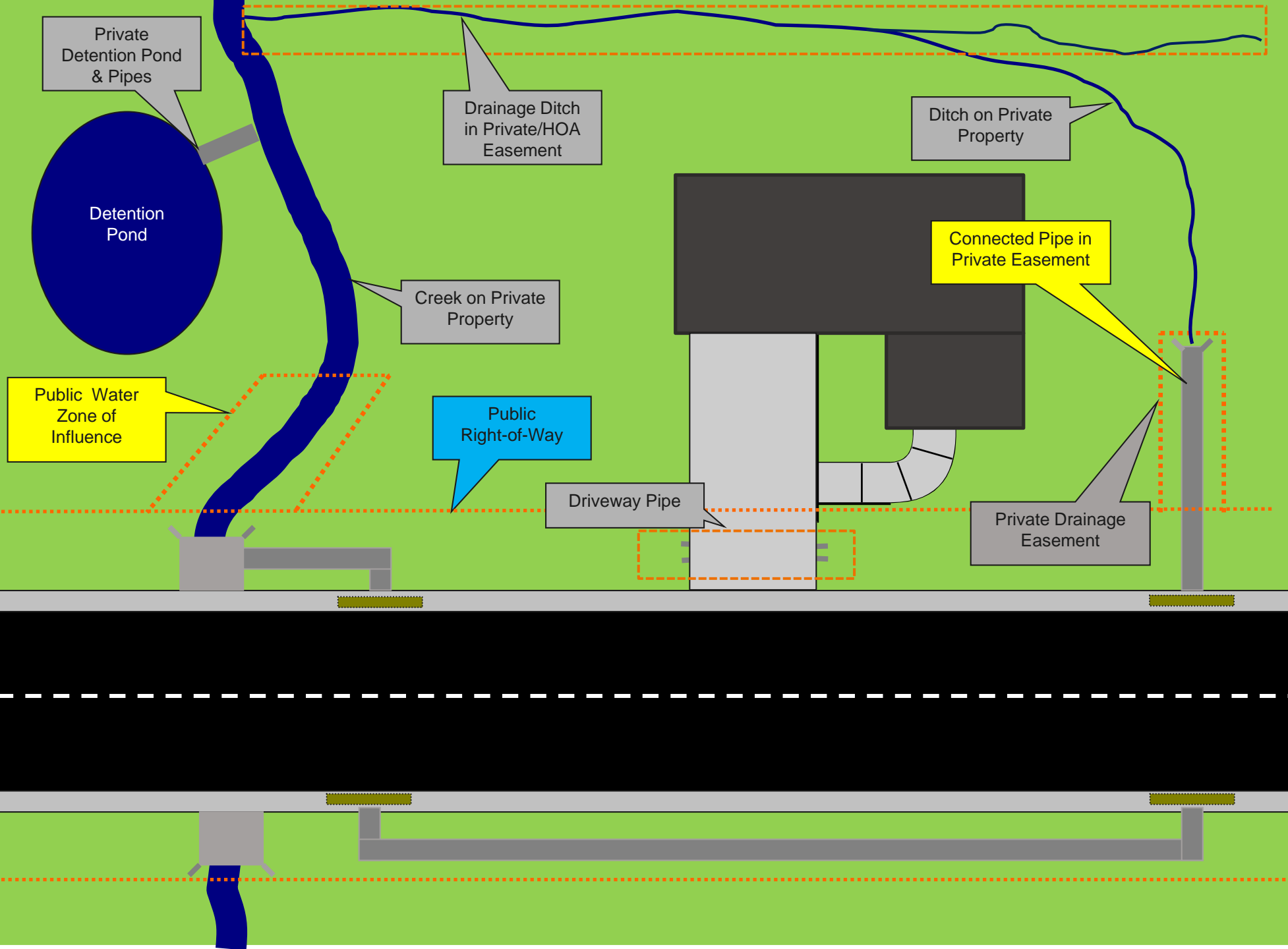
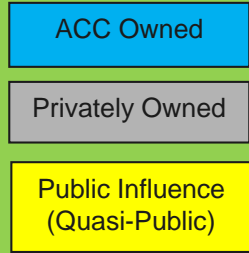
Where should ACC be responsible for providing stormwater service?

- Defines the extent of service

What services should be provided and how frequently?

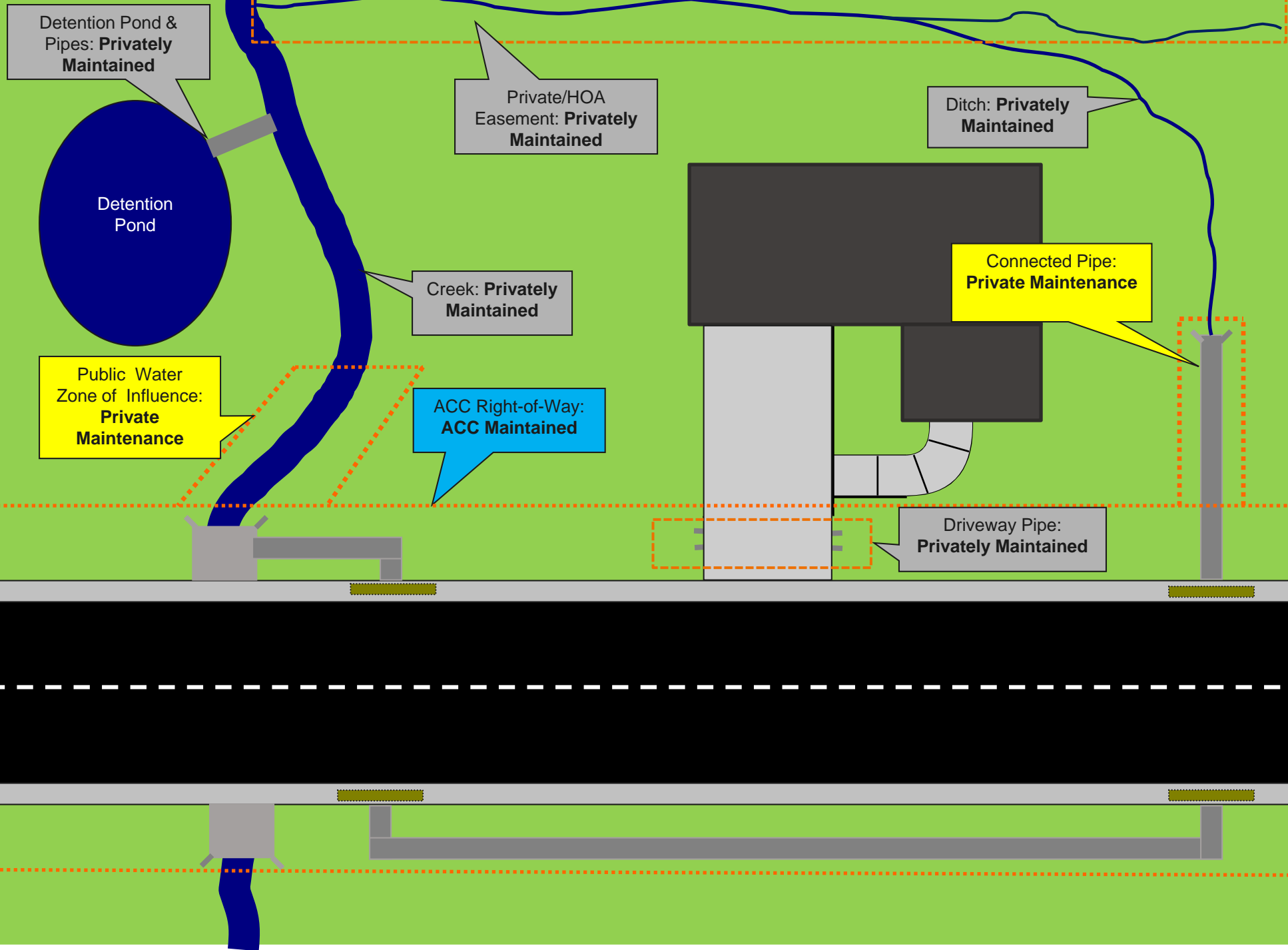
- Defines the level of service

Stormwater System Ownership



Current Stormwater System Maintenance

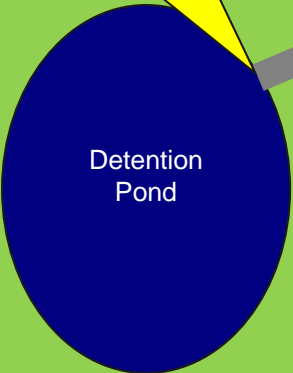
- ACC Owned
- Privately Owned
- Public Influence



Should ACC Extend Where it Provides Service?

- ACC Owned
- Privately Owned
- Public Influence

Detention Pond & Pipes?



Detention Pond

Public Water
Zone of Influence?

Private/HOA
Easement: **Privately
Maintained**

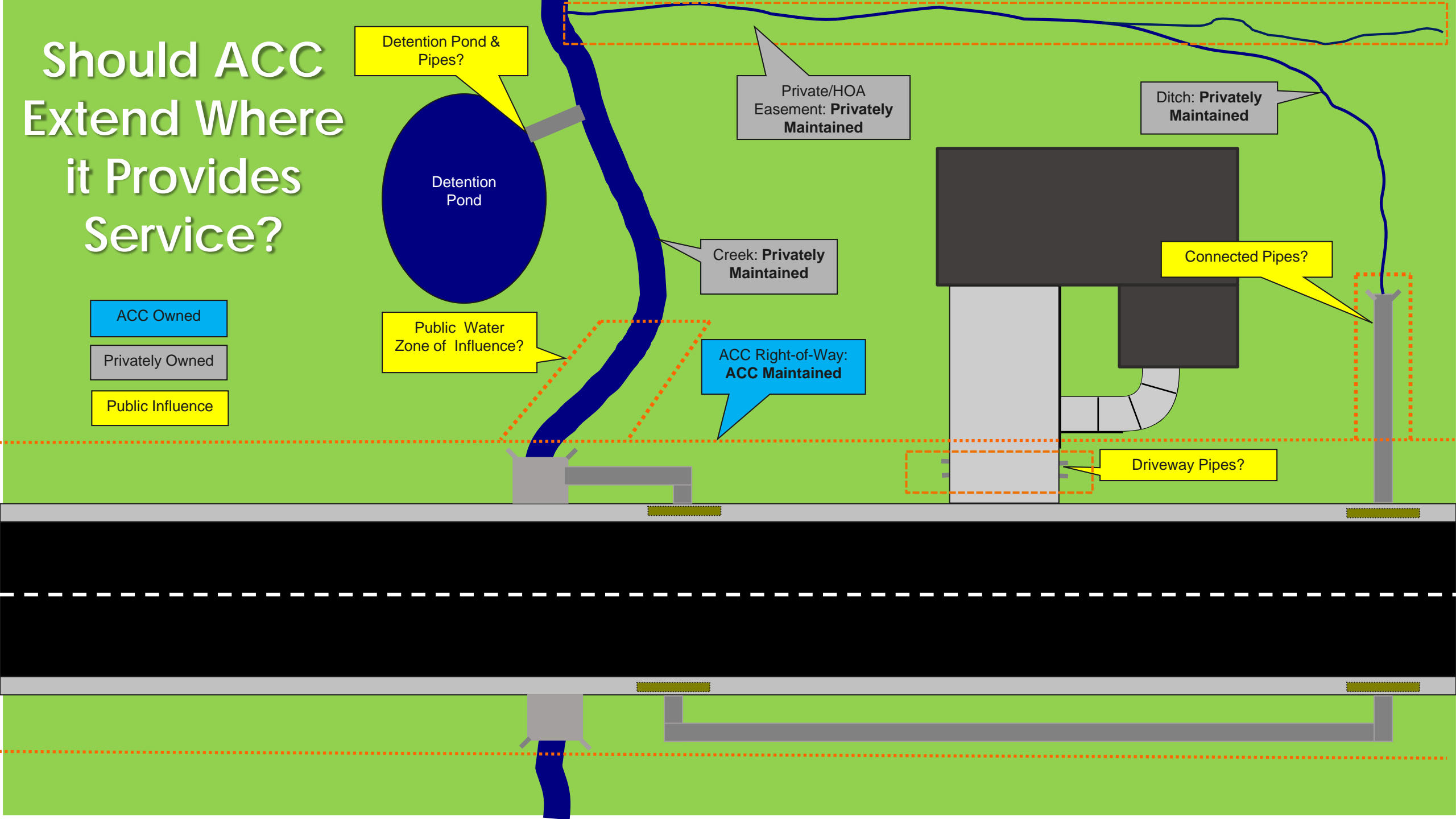
Creek: **Privately
Maintained**

ACC Right-of-Way:
ACC Maintained

Ditch: **Privately
Maintained**

Connected Pipes?

Driveway Pipes?



Should ACC Increase its Level of Service?



More Stormwater
Pipe Inspections
and Cleaning



More Maintenance
on Drainage
Structures



Increased
Street Sweeping



More Public Pond
Maintenance



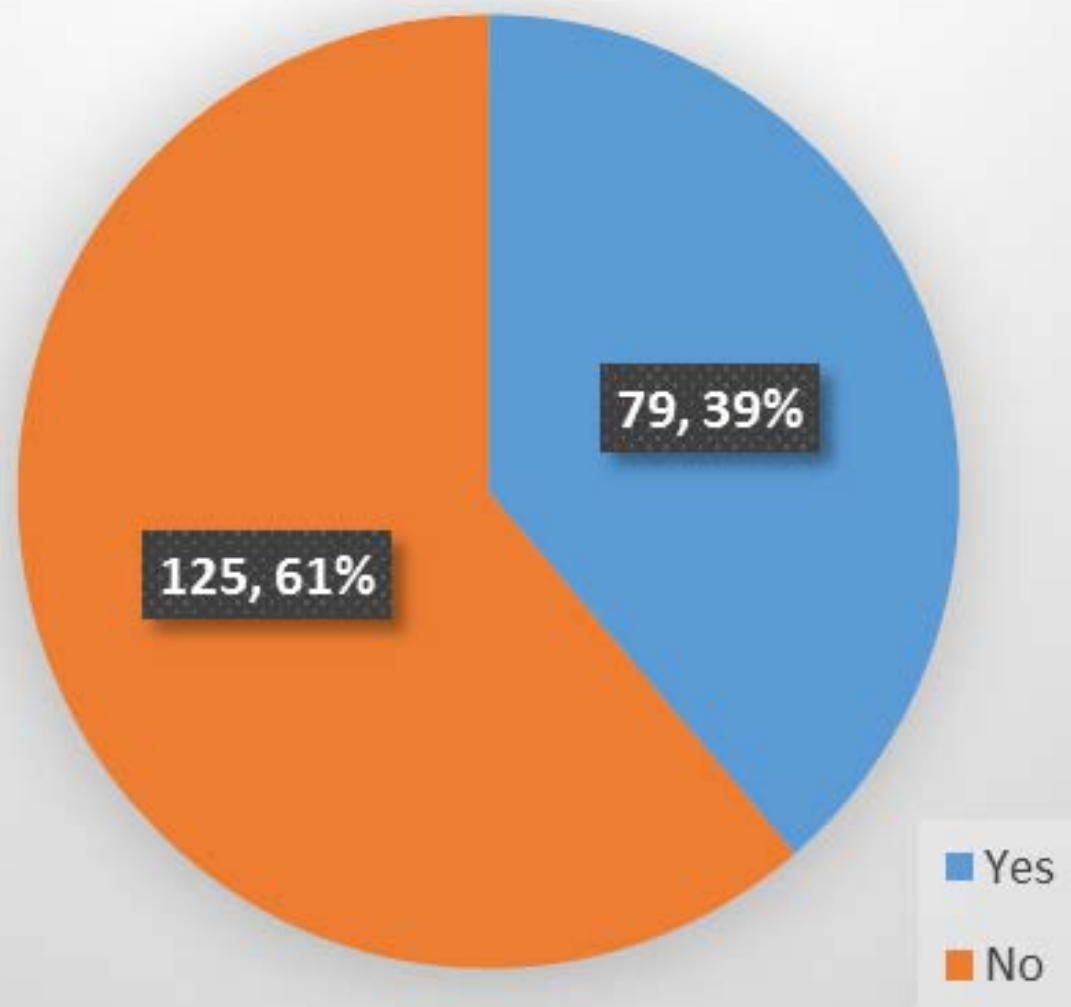
Unfunded Capital
Improvements



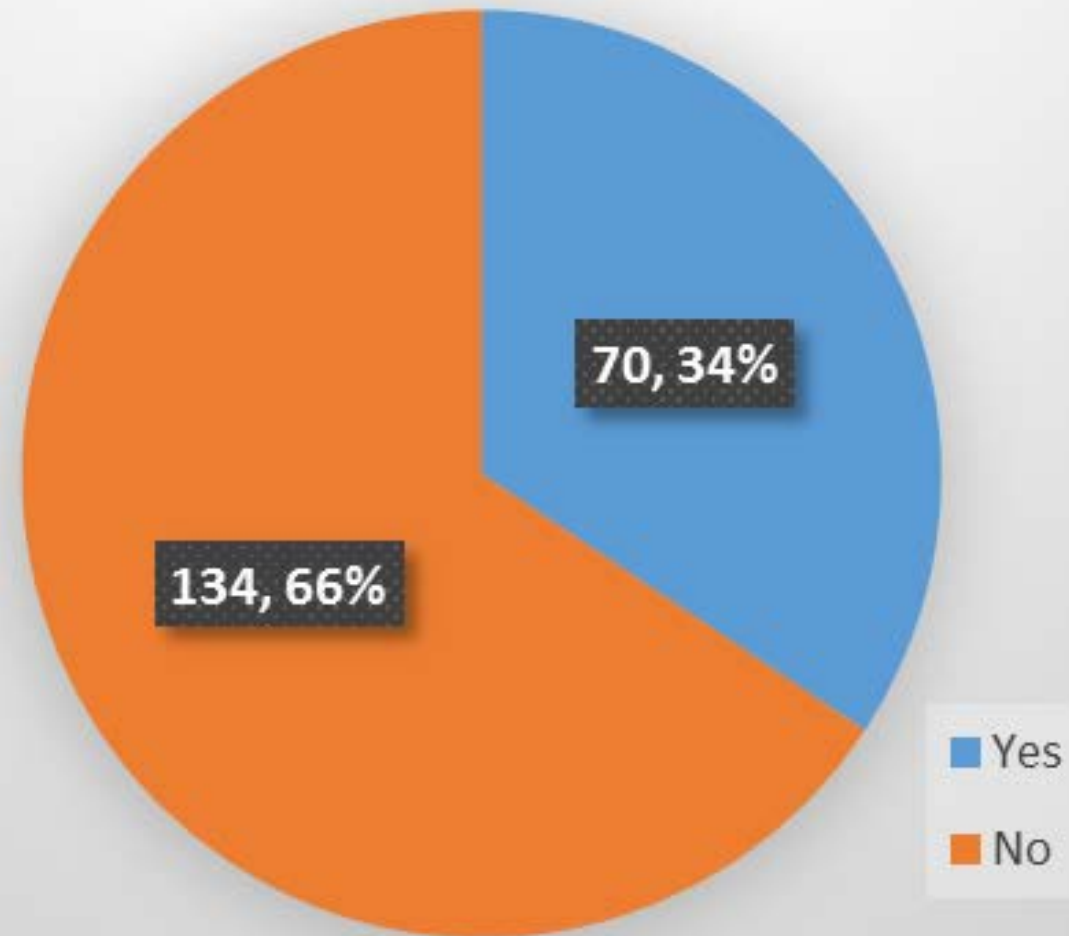


Survey Results

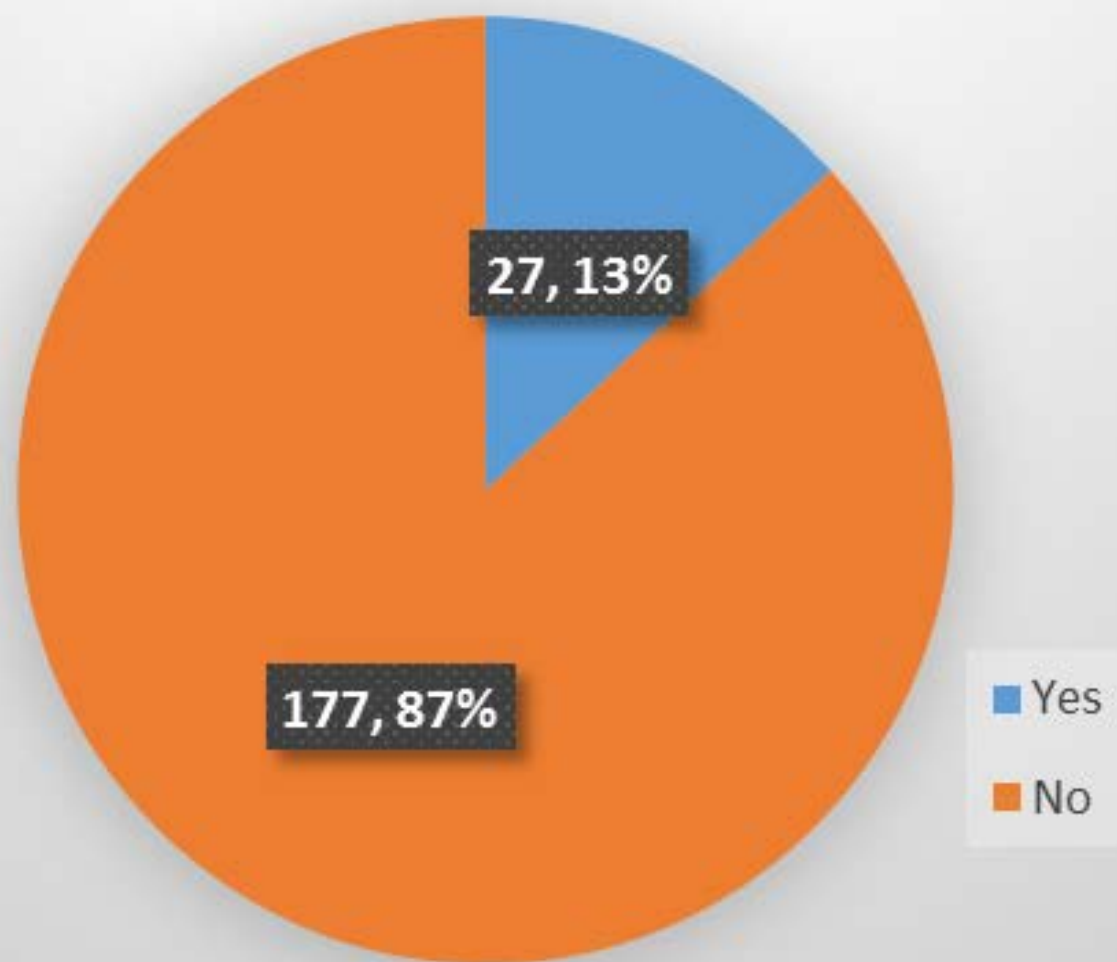
1. Do you have stormwater, flooding, or water quality issues on your property?



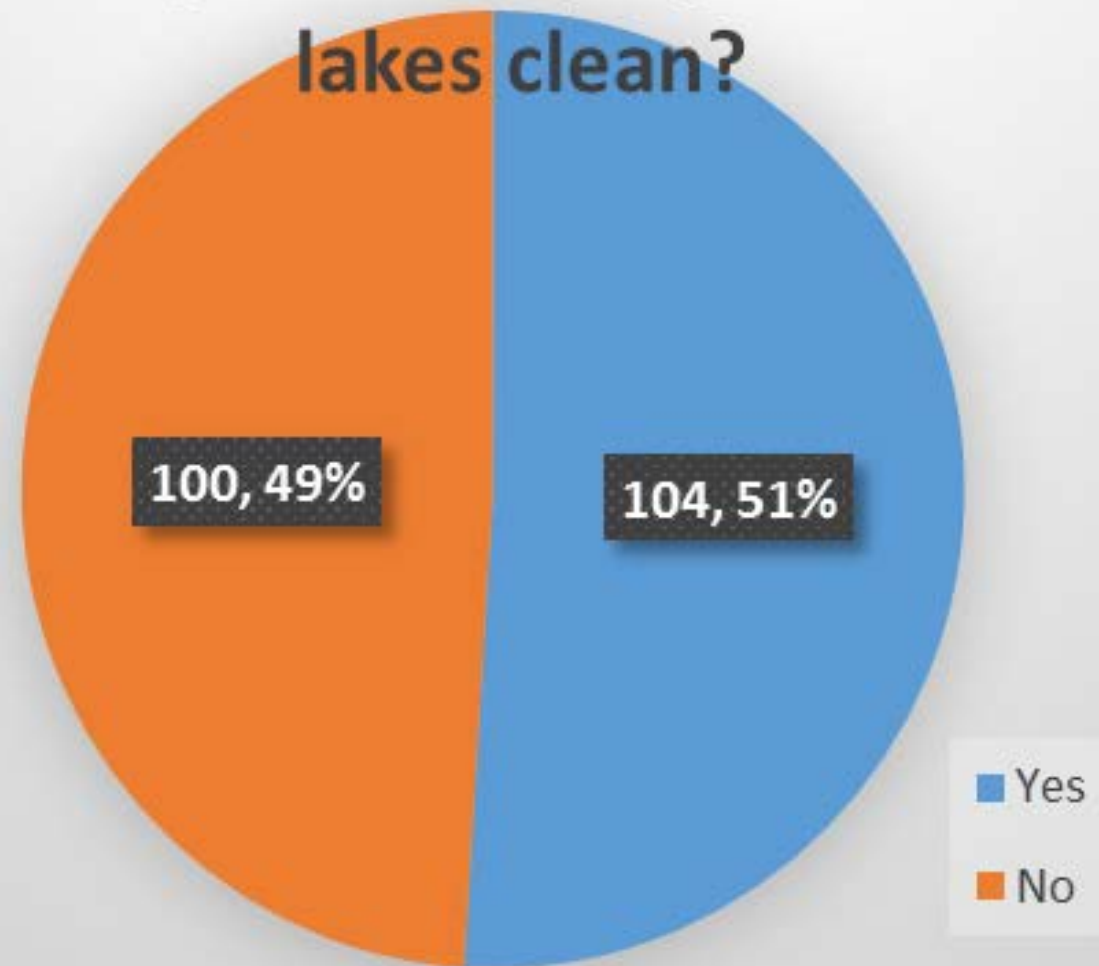
2. Do you believe that runoff from your neighbor's property or other upstream properties is negatively impacting your property?



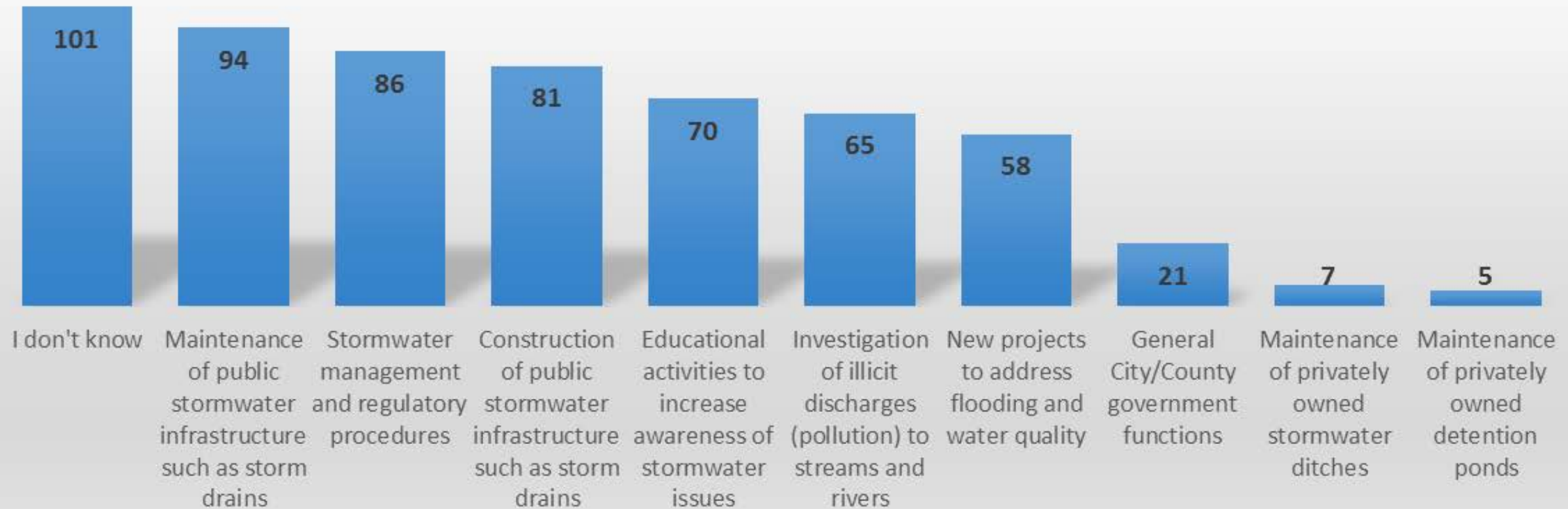
3. Do you believe that runoff from your property is negatively impacting your neighbor's property or other downstream properties?



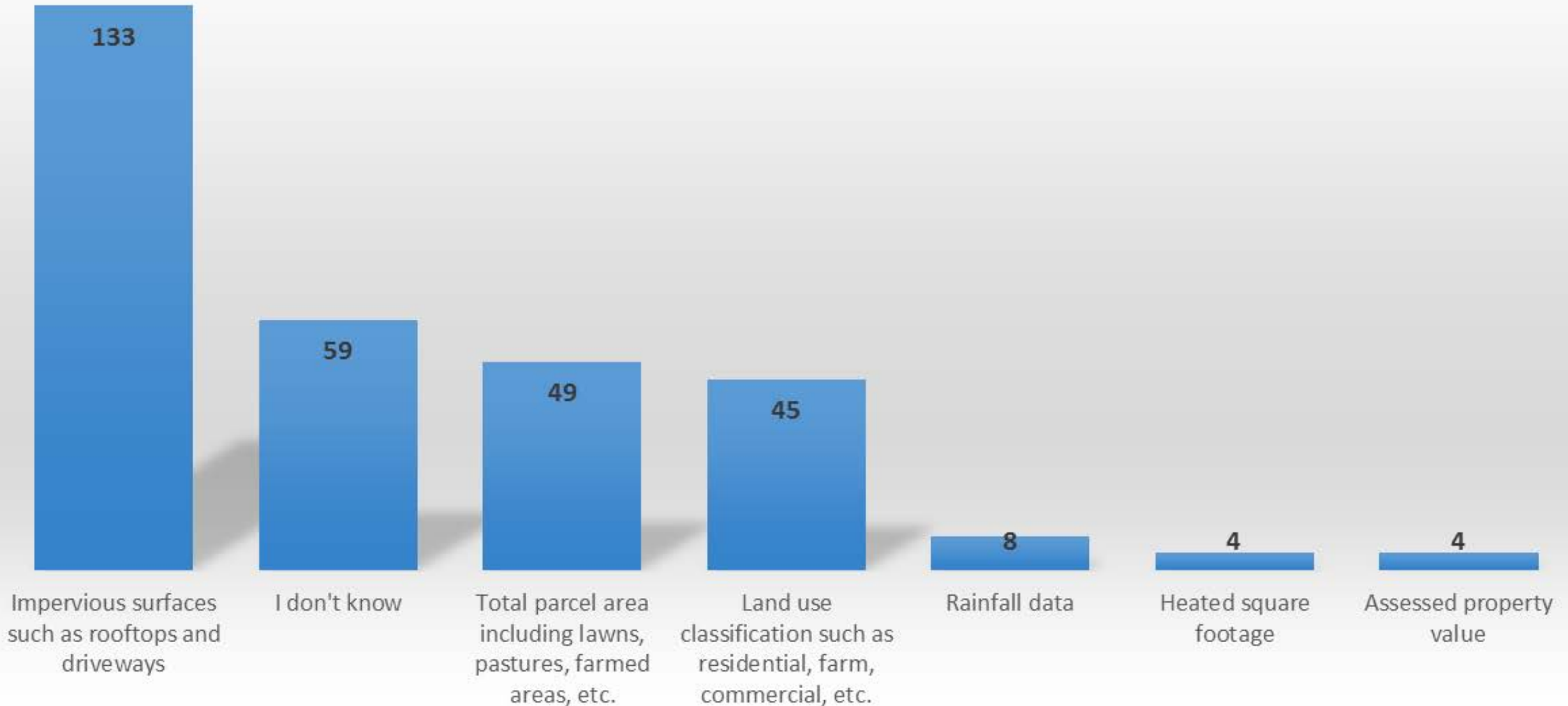
4. Do you think Athens-Clarke County is doing enough to manage stormwater and flooding problems along with keeping creeks, rivers, and lakes clean?



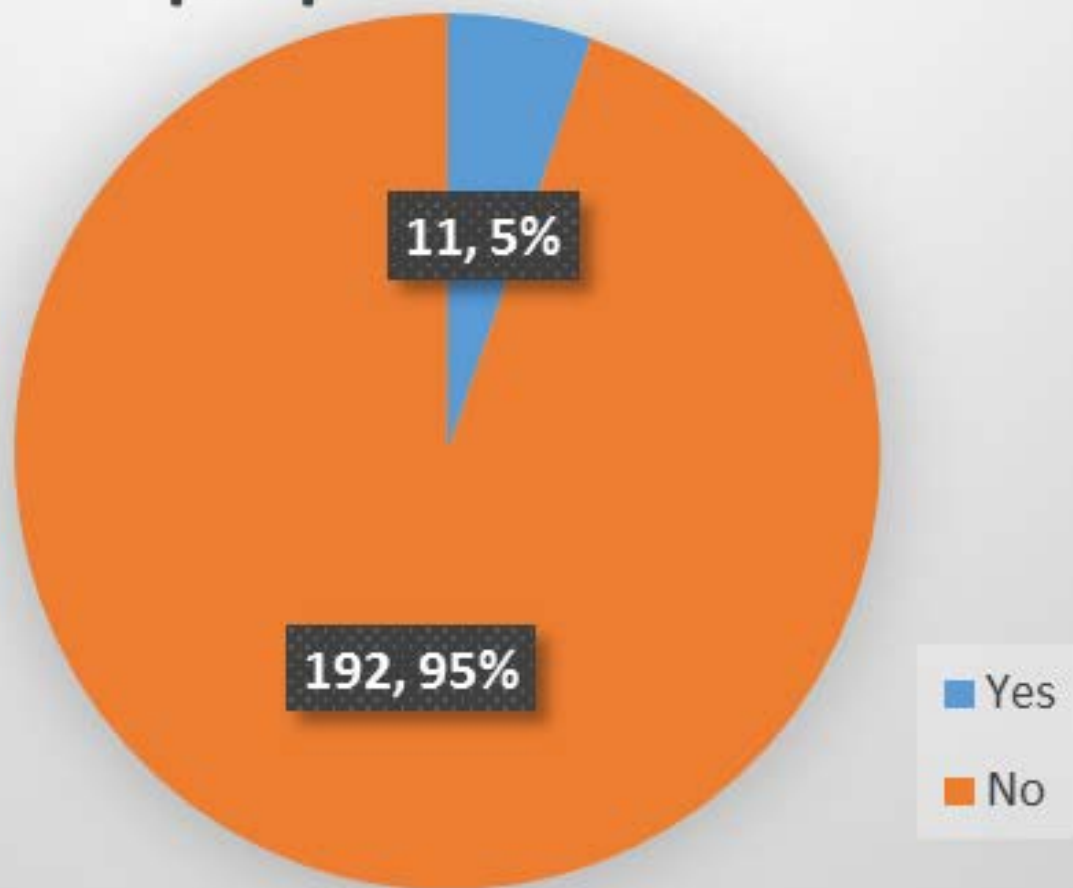
5. How does Athens-Clarke County invest stormwater fee revenues?



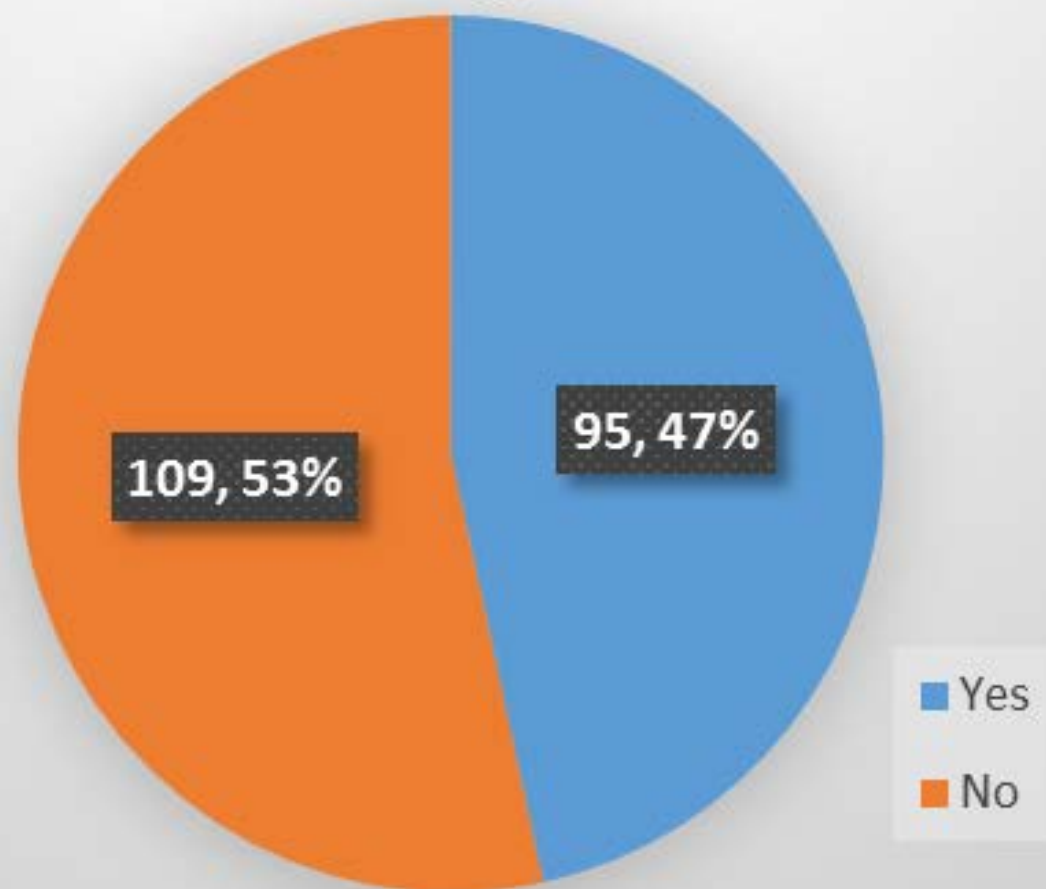
6. How does Athens-Clarke County determine the stormwater billing amount for your property?



7. ACC stormwater fees are charged to properties whether they are taxable or tax-exempt. Do you believe the fee should be charged only to taxable properties?

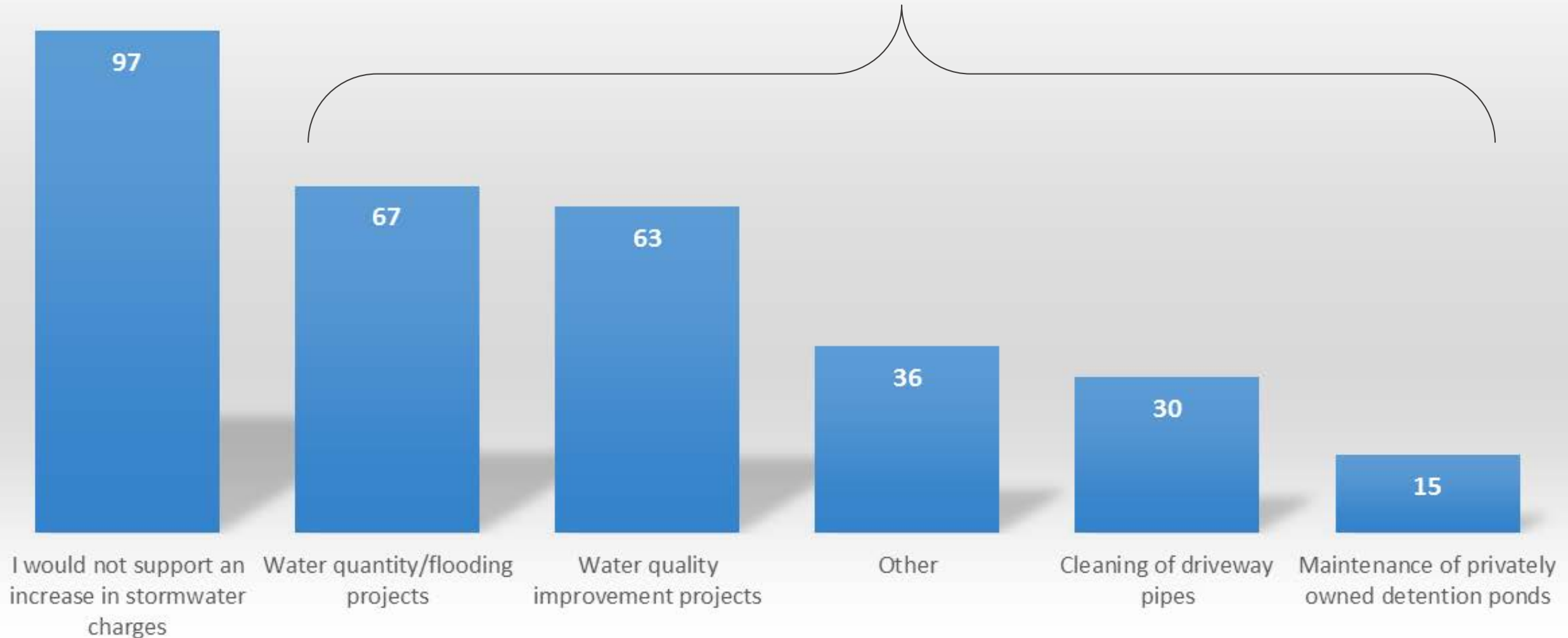


8. Do you believe that there are more stormwater flooding and water quality issues present than can be addressed with existing stormwater utility funding?



9. Would you support an increase in stormwater charges if it helped Athens-Clarke County to address:

107 support an increase to fund these services





Interactive Stations