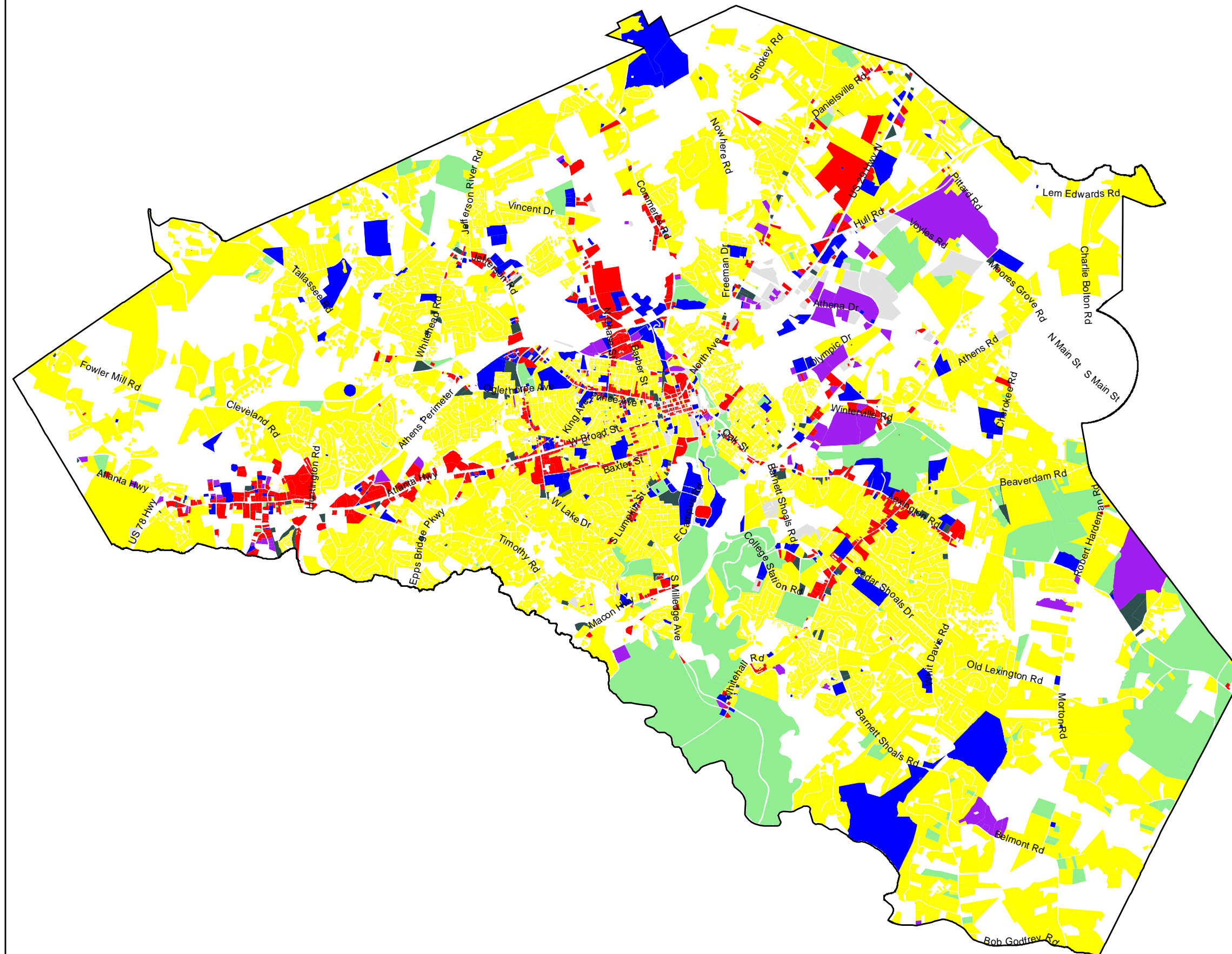


Land-based Classification Standards - Activity



Legend

- Residential Activities
- Shopping, Business, or Trade Activities
- Industrial, Manufacturing or Waste-related Activities
- Social, Institutional, or Infrastructure-related Activities
- Travel or Movement Activities
- Mass Assembly of People
- Leisure Activities
- Natural Resource-related Activities
- Unclassifiable Activities

