

441

Old Commerce Road

**Oak Shelterwood**

- Thin/Remove Understory To Increase Ambient Light
- Use Prescribed Fire To Clear Invasives/Release Nutrients
- Selectively Use Herbicide To Clear Invasives
- Plant Mast (ex: Acorn) Producing Trees

**Planted Pine 2**

- Thin Overcrowded and Diseased Trees
- Use Prescribed Fire To Clear Invasives/Release Nutrients
- Selectively Use Herbicide To Clear Invasives

**Planted Pine 3**

- Thin Overcrowded and Diseased Trees
- Use Prescribed Fire To Clear Invasives/Release Nutrients
- Selectively Use Herbicide To Clear Invasives

**Planted Pine 1**

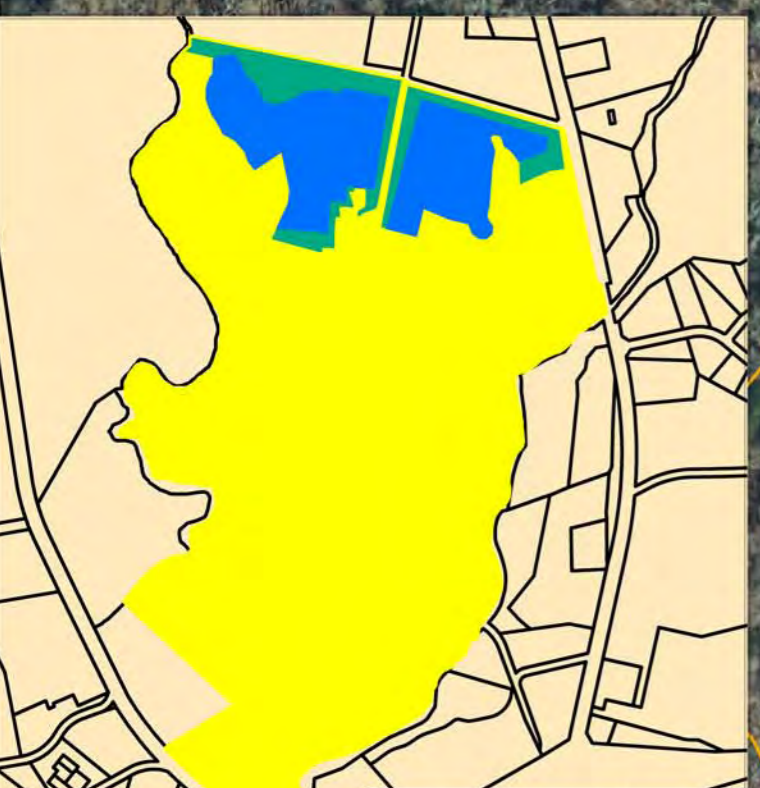
- Harvest Trees
- Create Meadow/Early Succession
- Use Prescribed Fire/Targeted Herbicides to Prepare Site and Eliminate Invasives
- Plant Pine Seedlings On A "Wildlife" Spacing

**Pine Shelterwood**

- Thin Overcrowded and Diseased Trees
- Use Prescribed Fire To Clear Invasives/Release Nutrients
- Selectively Use Herbicide To Clear Invasives

Piedmont Prairie

Education and Visitor Center



**Overview of Site**

- Sandy Creek Nature Center
- Managed Forest Project Boundary
- Managed Buffer

**Proposed Managed Forest Project  
First Year Planned Activities**

	Sandy Creek Nature Center
	Education and Interpretive Nodes
	P1 - Planted Pine Demonstration Plot
	P2 - Planted Pine Demonstration Plot
	P3 - Planted Pine Demonstration Plot
	PS1 - Pine Shelterwood Demonstration Plot
	OS1 - Oak Shelterwood Demonstration Plot
	Managed Buffer
	Trails
	Trails - New

