





## **Build In-Fill Housing in Athens-Clarke County's Historic Districts**

Architectural drawings for one bedroom, two bedroom, three bedroom and four bedroom/duplex in-fill houses are available at the Athens-Clarke County Planning Department and on-line. These drawings were completed as part of a CLG (Certified Local Government) grant received from the Historic Preservation Division of the Department of Natural Resources by the Unified Government of Athens-Clarke County. The designs were prepared by local designer/builders: Van Strickland Residential Design Services and D.O.C. Unlimited (Carl Martin and Dennis Harper) in conjunction with a committee composed of representatives of the Historic Preservation Commission, Human and Economic Development, Planning Department and the Athens Housing Authority. The premise of this project is that three goals (in-fill development, affordable housing and historic preservation) can be combined to the benefit of both individual neighborhoods and the community.

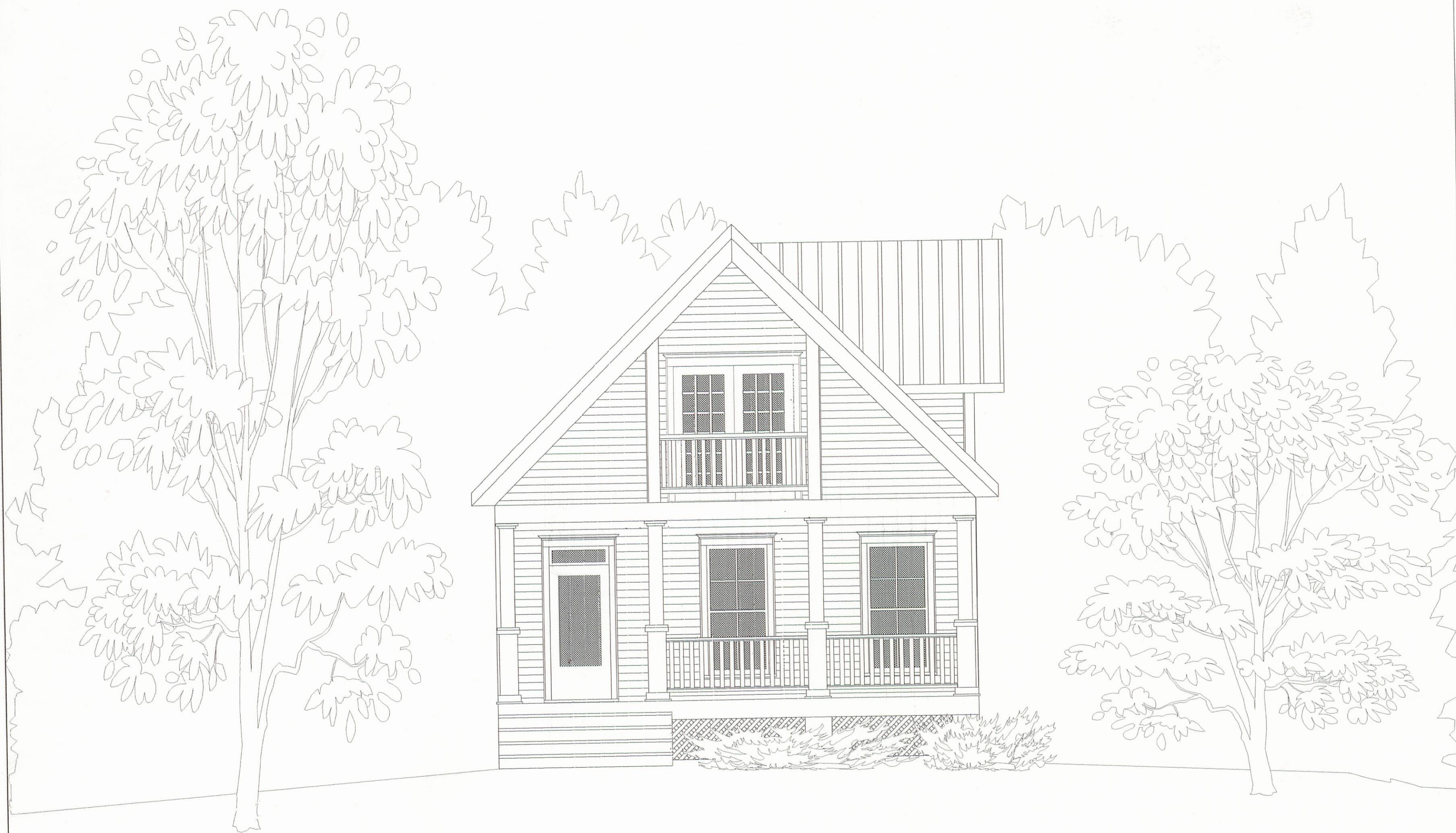
Please contact the Historic Preservation Planner at the Athens-Clarke County Planning Department (706 613-3515 for more information on this project.

*This publication has been financed in part with federal funds from the National Park Service U.S. Department of the Interior, through the Historic Preservation Division of the Georgia Department of Natural Resources. However, the contents and opinions do not necessarily reflect the views or policies of the Department of the Interior or the Georgia Department of Natural Resources, nor does the mention of trade names, commercial products or consultants constitute endorsement or recommendation by these agencies.*

*This program received Federal financial assistance for identification and protection of historic properties. Under Title VI of the Civil Rights Act of 1964, Section 504 of the Rehabilitation Act of 1973, and the Age Discrimination Act of 1975, as amended, the U. S. Department of the Interior prohibits discrimination on the basis of race, color, national origin, age, gender, or disability in its federally-assisted programs. If you believe that you have been discriminated against in any program, activity, or facility as described above, or if you desire further information, please write to:*

*Office of Equal Opportunity  
National Park Service  
Post Office Box 37127  
Washington, D.C. 20013-7127*





FOUR BEDROOM HOUSE

ATHENS, GEORGIA

HISTORIC DISTRICT

PROJECT:

FRONT ELEVATION

TITLE:

DATE:

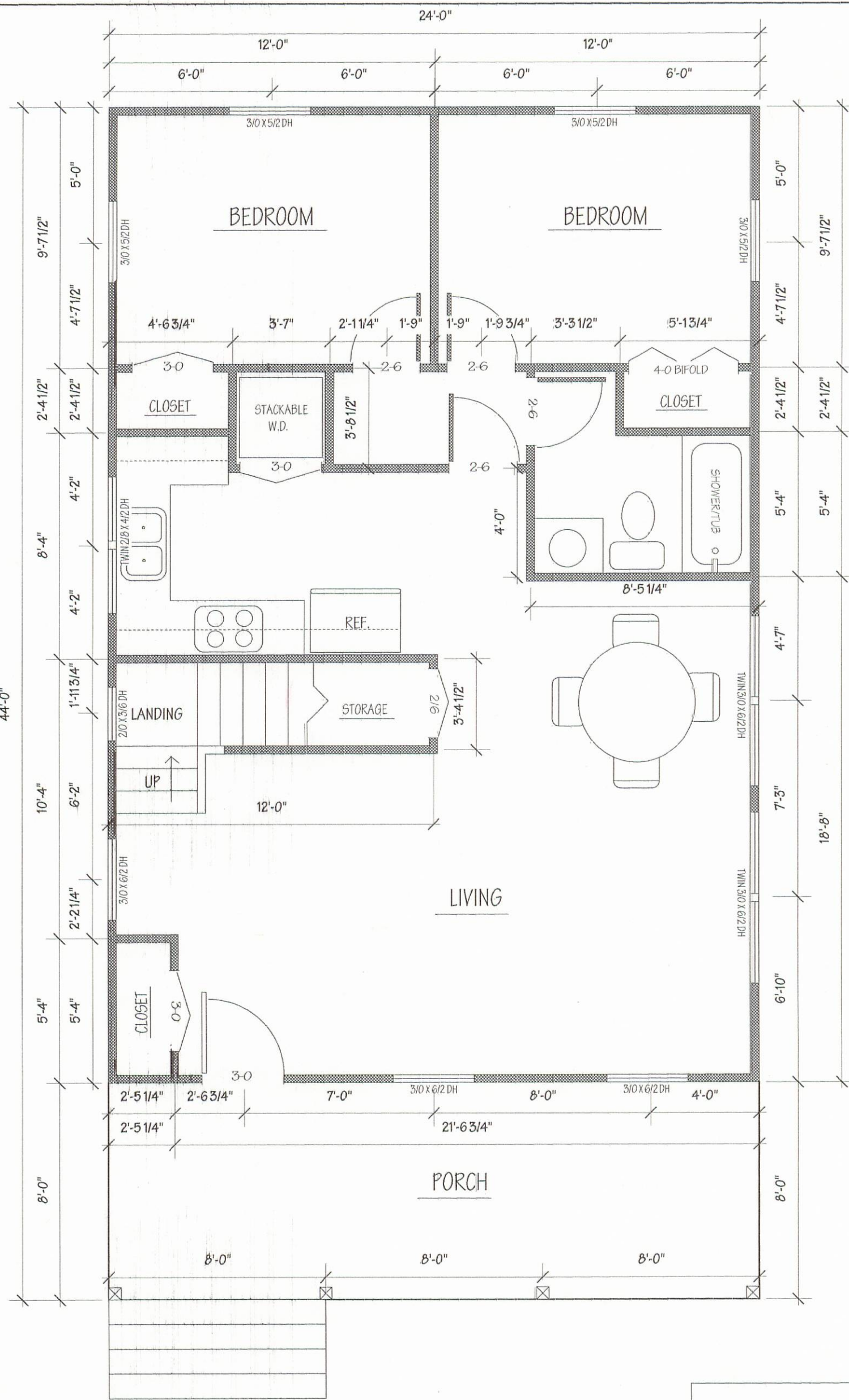
MARCH 3, 1996

REVISIONS:

SHEET NO.

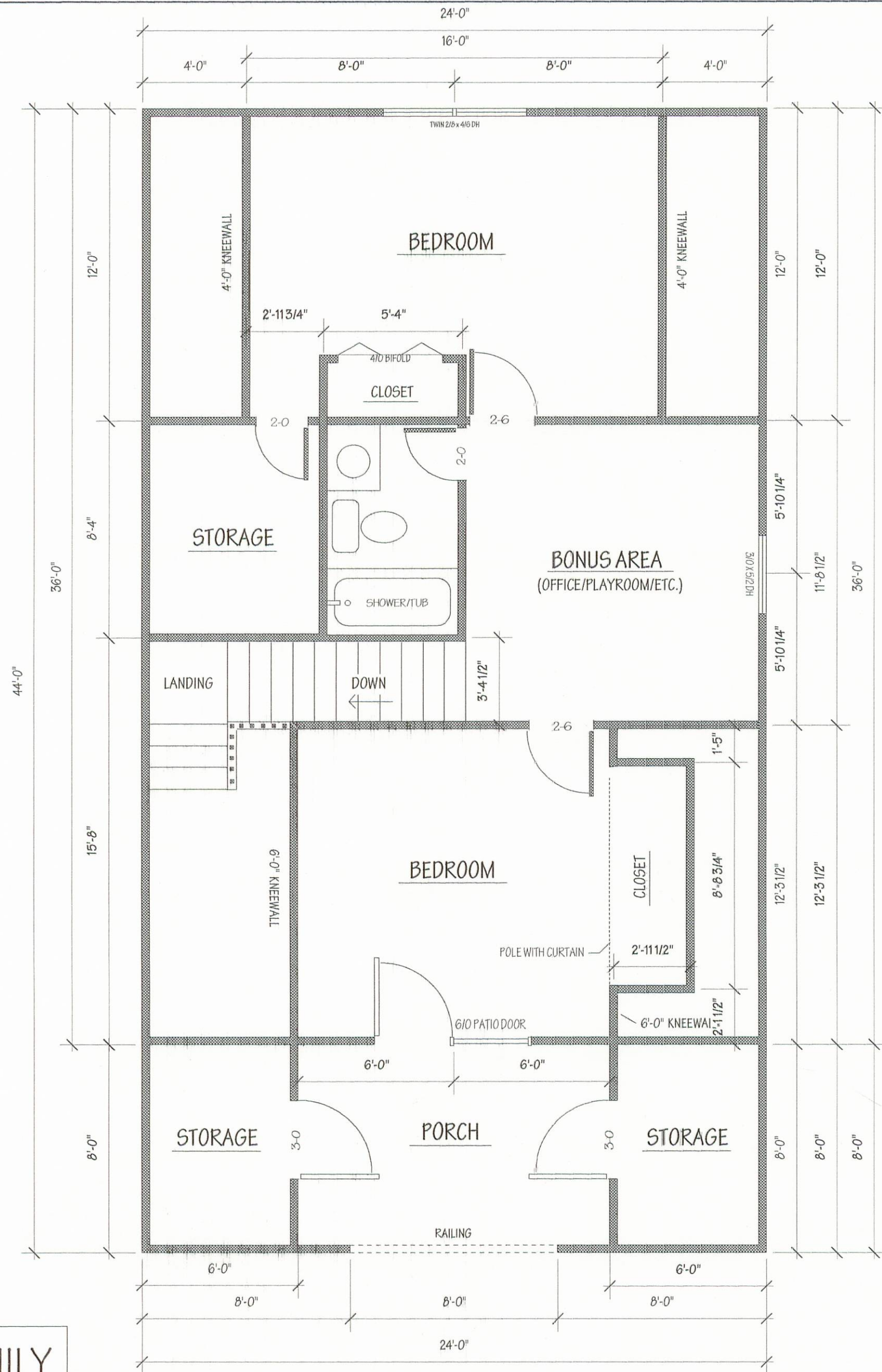
1





DOWNSTAIRS  
( 864 SQ. FT.)

SINGLE FAMILY  
SCALE: 1/4" = 1' - 0"  
(TOTAL SQ. FT. = 1294 SQ. FT.)



UPSTAIRS  
( 430 SQ. FT.)

FOUR BEDROOM HOUSE  
ATHENS, GEORGIA  
HISTORIC DISTRICT

PROJECT:

SINGLE FAMILY  
FLOORPLAN

TITLE:

DATE:

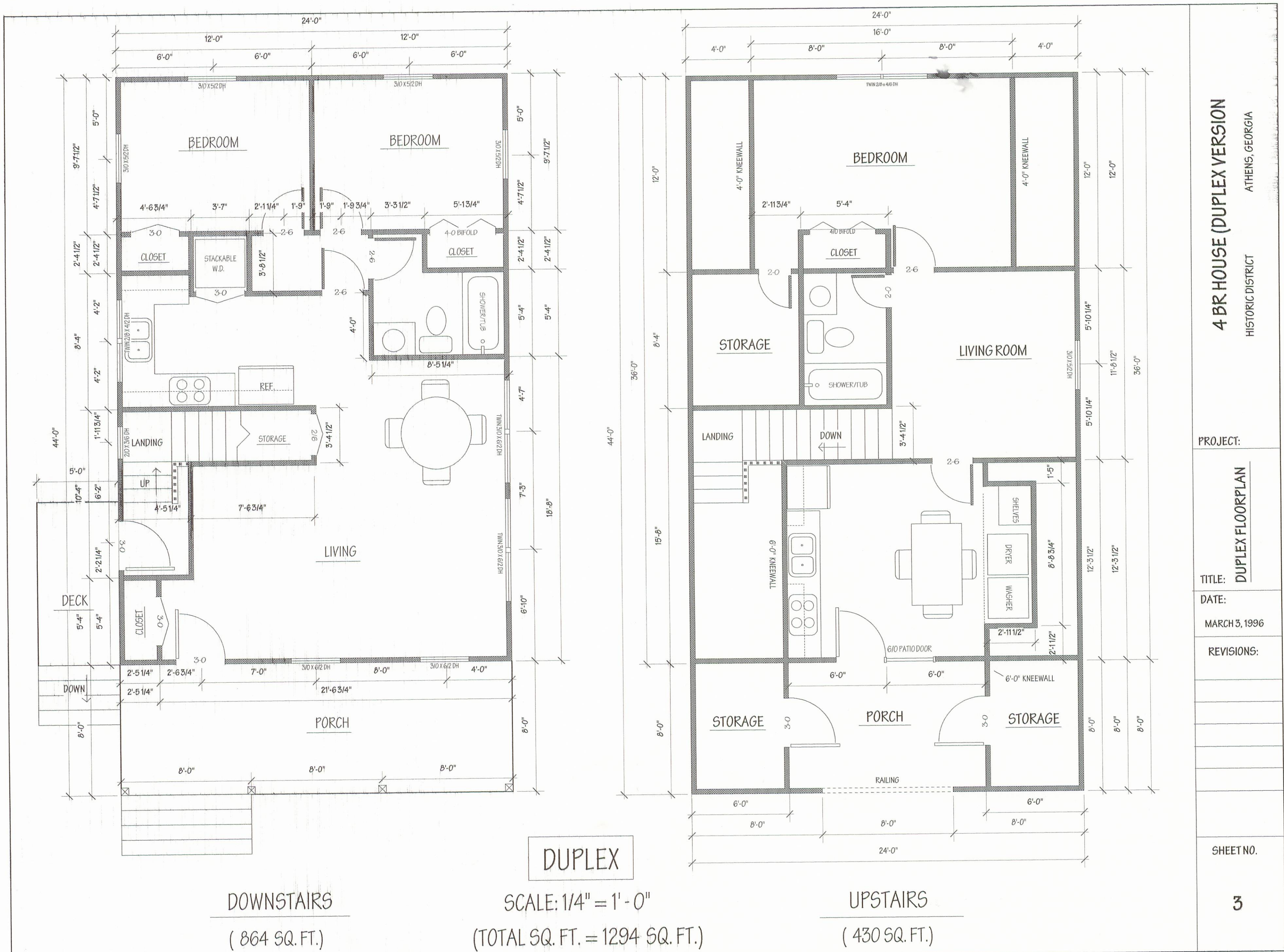
MARCH 3, 1996

REVISIONS:

SHEET NO.

2





4 BR HOUSE (DUPLEX VERSION)

ATHENS, GEORGIA

HISTORIC DISTRICT

PROJECT:

DUPLEX FLOORPLAN

TITLE:

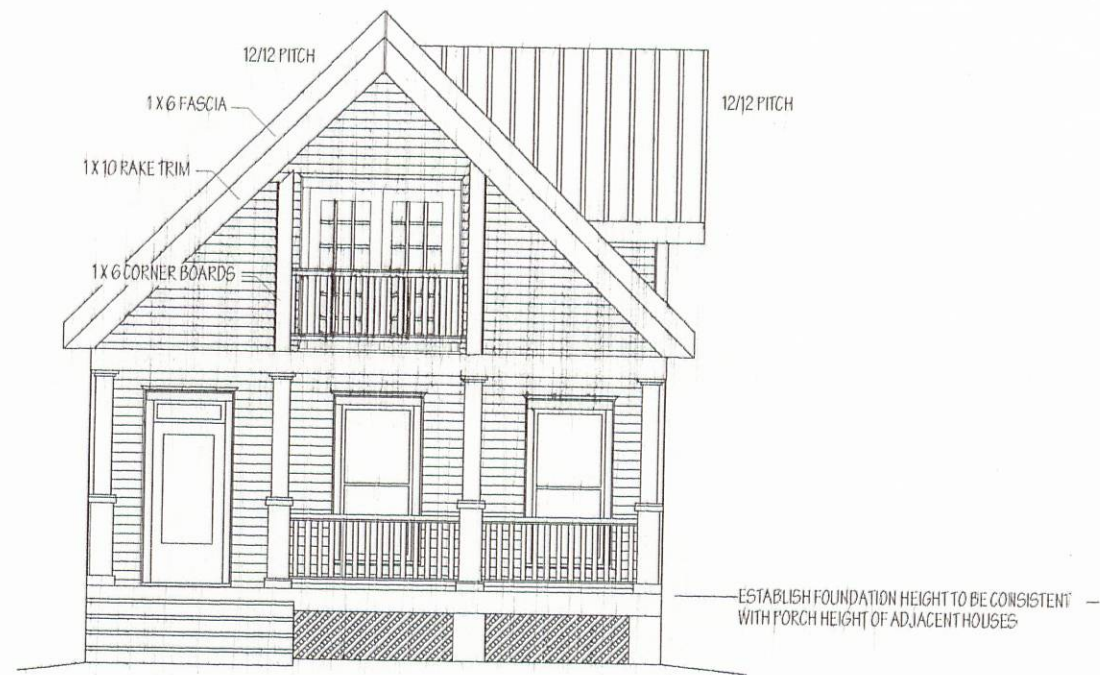
DATE:

MARCH 3, 1996

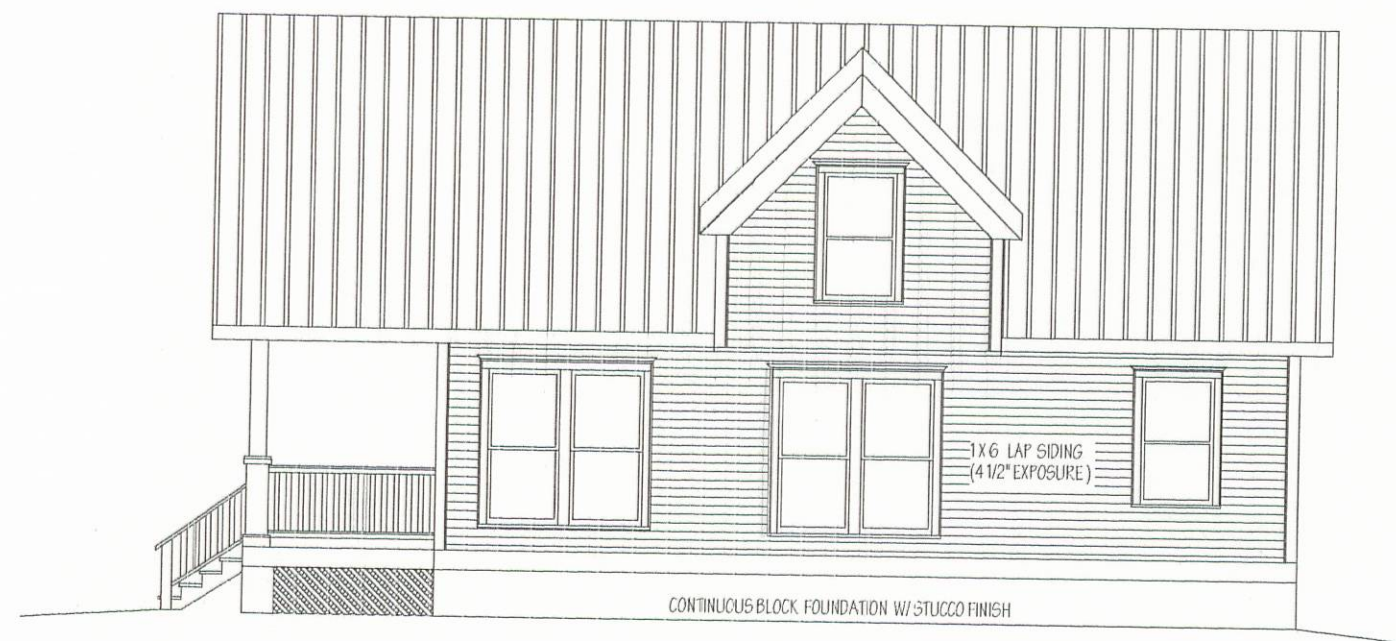
REVISIONS:

SHEET NO.





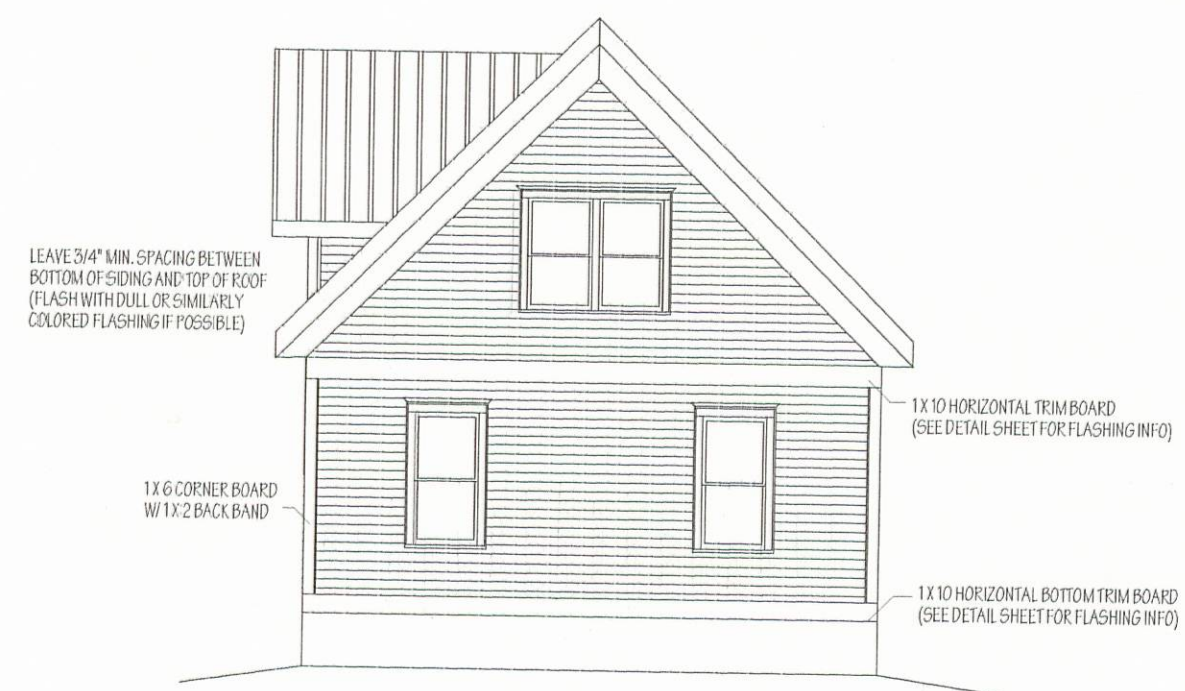
FRONT



RIGHT SIDE



LEFT SIDE



REAR

ELEVATIONS  
SCALE: 1/8" = 1' - 0"

FOUR BEDROOM HOUSE

ATHENS, GEORGIA  
HISTORIC DISTRICT

PROJECT:

ELEVATIONS

TITLE:

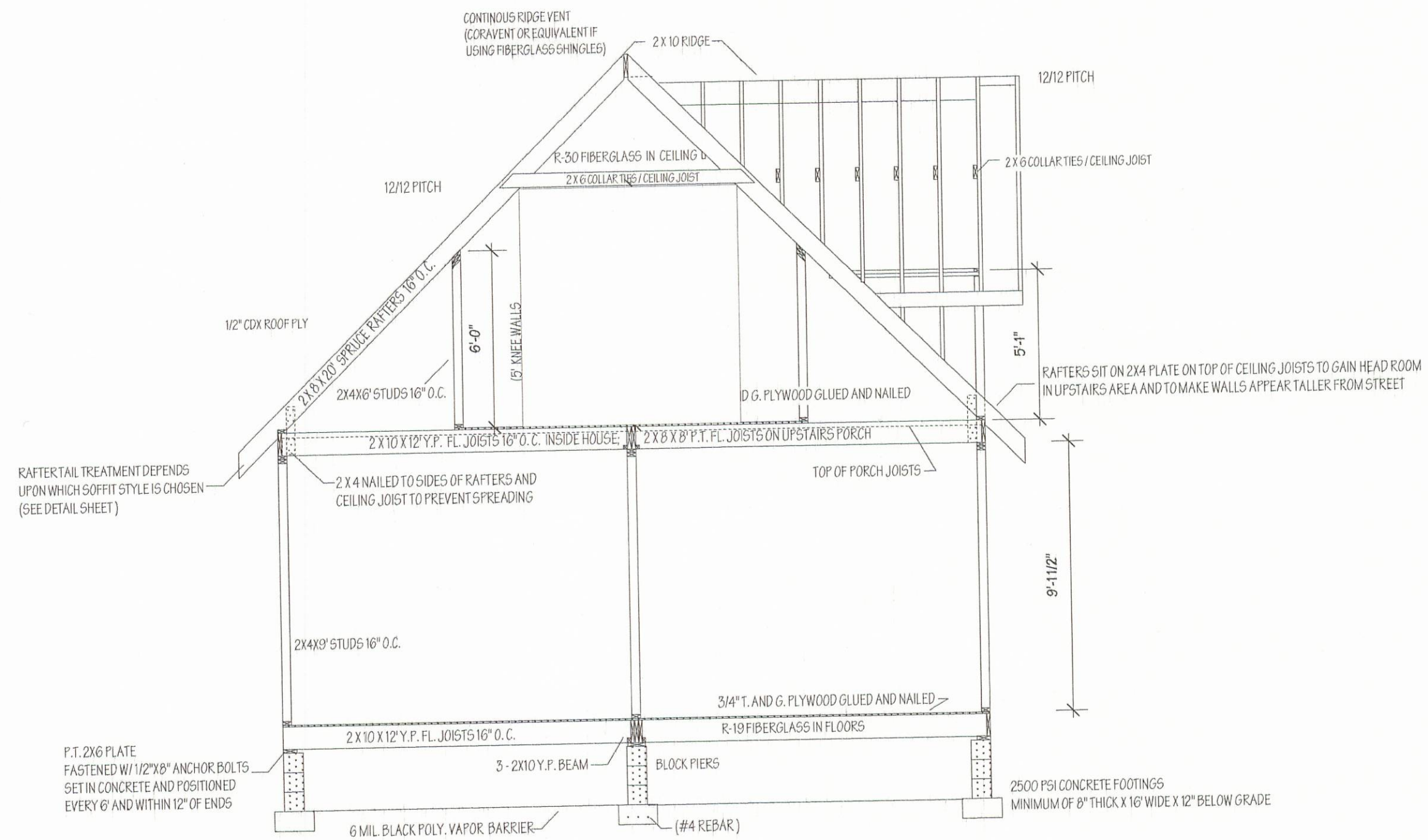
DATE:

REVISIONS:  
MARCH 3, 1996

SHEET NO.

4





## SECTION (FRONT VIEW)

SCALE: 1/4" = 1' - 0"

FOUR BEDROOM HOUSE  
ATHENS, GEORGIA  
HISTORIC DISTRICT

PROJECT:

SECTION

TITLE:

DATE:

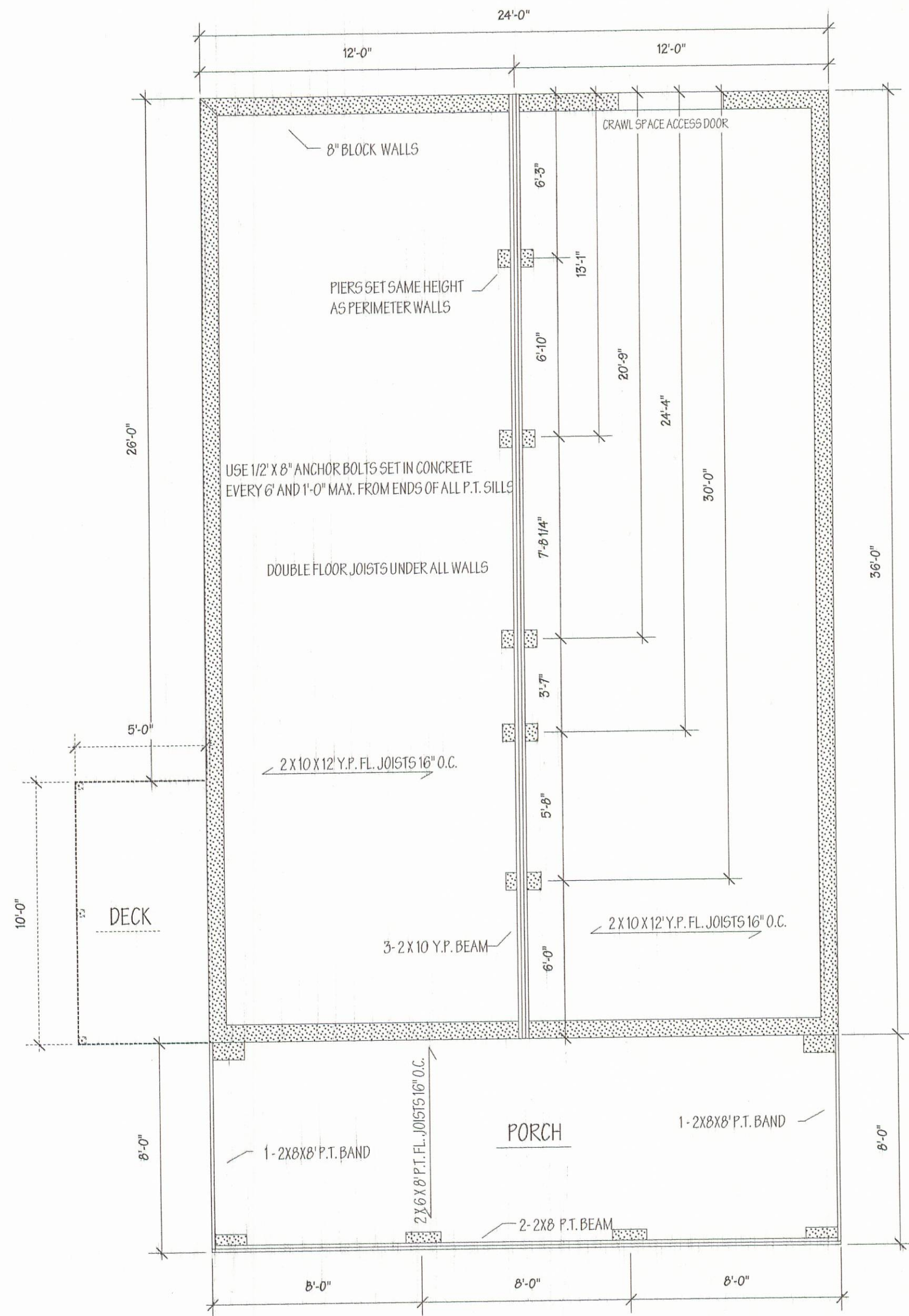
MARCH 3, 1996

REVISIONS:

SHEET NO.

5





## FOUNDATION PLAN

SCALE: 1/4" = 1'-0"

FOUR BEDROOM HOUSE  
HISTORIC DISTRICT  
ATHENS, GEORGIA

PROJECT:

FOUNDATION PLAN

TITLE:

DATE:

MARCH 3, 1996

REVISIONS:

SHEET NO.

6



HOUSE WALLS

DOUBLE FLOOR JOISTS UNDER ALL WALLS

3-2 X 10 X 12" Y.P. BEAM  
OVER KITCHEN AND HALL OPENING  
(SET ON TOP OF WALL PLATE)

STAIRS

2-9 3/4" MICRO LAM BEAMS SET ON TOP  
OF WALL PLATE OVER LIVING ROOM  
(WILL HAVE TO BE RIPPED TO 9 1/4")

2 X 10 X 12" Y.P. CEILING/FLOOR JOISTS 16" O.C.

2 X 8 X 8" P.T. CEILING/FLOOR JOISTS 16" O.C.

PORCH

2-2 X 8 X 8" P.T. BEAM

3-2 X 8 X 8" P.T. BEAM

3-2 X 8 X 8" P.T. BEAM

2-2 X 8 X 8" P.T. BEAM

## CEILING JOIST PLAN

SCALE: 1/4" = 1' - 0"

### NOTES:

ALL RAFTERS ARE 2 X 8  
ALL ROOF PITCHES ARE 12/12,  
ALL OVERHANGS ARE 16".

HOUSE WALLS

MAIN RIDGE

VALLEY

DORMER RIDGE

VALLEY

PORCH

## ROOF PLAN

SCALE: 1/4" = 1' - 0"

## FOUR BEDROOM HOUSE

ATHENS, GEORGIA

HISTORIC DISTRICT

PROJECT:

### ROOF PLAN

TITLE:

DATE:

MARCH 3, 1996

REVISIONS:

SHEET NO.

7