

297 BLOOMFIELD STREET

ATHENS GA

To be completely transparent, a contractor was hired to attend to deficiencies outlined on an inspection report generated by a house inspector prior to purchase. The contractor had not worked on a historic property previously and was unaware of the C.O.A. process and had begun the project prior to this application. I was hired to process this application in hope of attaining permission to maintain the existing replaced windows and allow for two additional windows to also be replaced to match the others. To date 9 of the 11 double hung windows have been replaced.

No second-story attic windows have been replaced, and we do not wish to replace them.

No enclosed porch windows at rear of house have been replaced, and we do not wish to replace them.

No basement windows have been replaced, and we do not wish to replace them.

The 9 original double hung windows that have been replaced were 3'0" x 6'2" 6 lite over 1 lite True Divided Lite (TDL) wood windows. They have been replaced with the modern equivalent double pane 3'0" x 6'2" 6 lite over 1 lite TDL wood windows.

"Example picture 297 p7"

Windows replaced: (3x) right side picture 297 p1

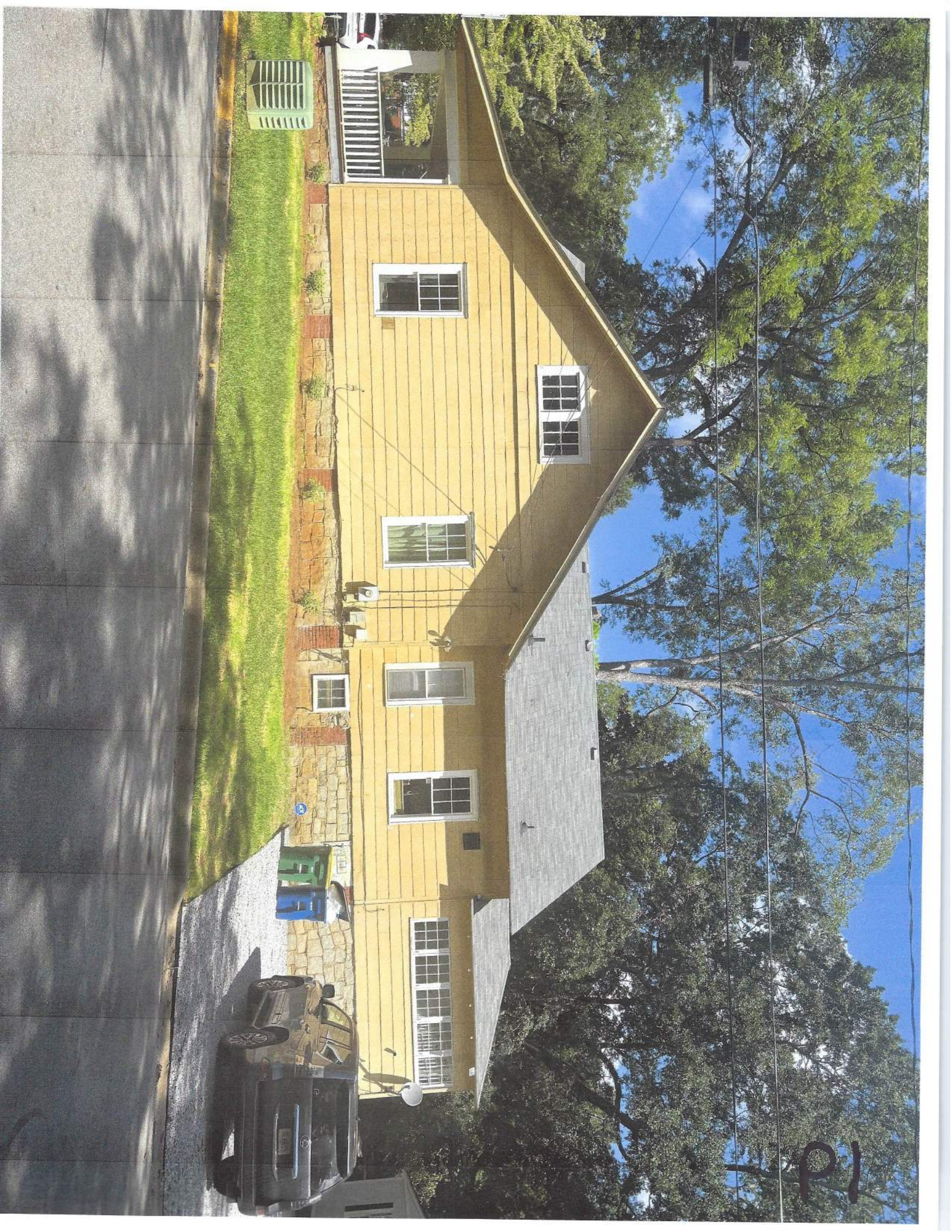
(4x) left side picture 297 p3

(2x) front picture 297 p4

The 2 original double hung windows that have not been replaced that we are asking to replace are located on the left and right of the house and are 1'10" x 6'2" 4 lite over 1 lite TDL wood windows. We are asking to replace them with the modern equivalent double pane 1'10" x 6'2" 4 lite over 1 lite TDL wood windows.

"Example pictures 297 p1 and 297 p3"

On the next page I have included an INDEX OF PICTURES to aid in your review



PI

Athens, Georgia

Google Street View

Jan 2025 [See more dates](#)

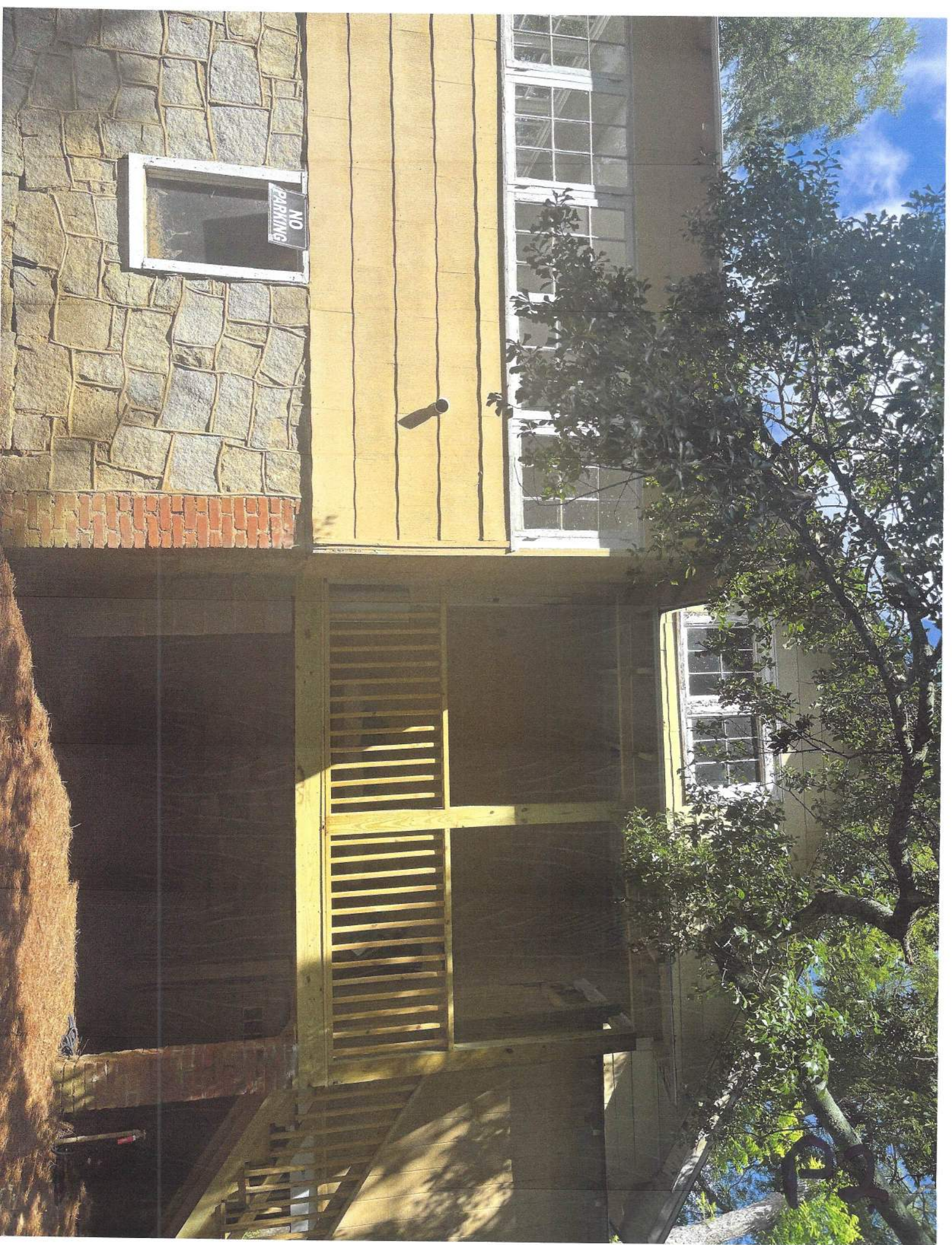


Google

Image capture: Jan 2025 © 2025 Google



P.I.



Athens, Georgia

 Google Street View

Jan 2025 [See more dates](#)

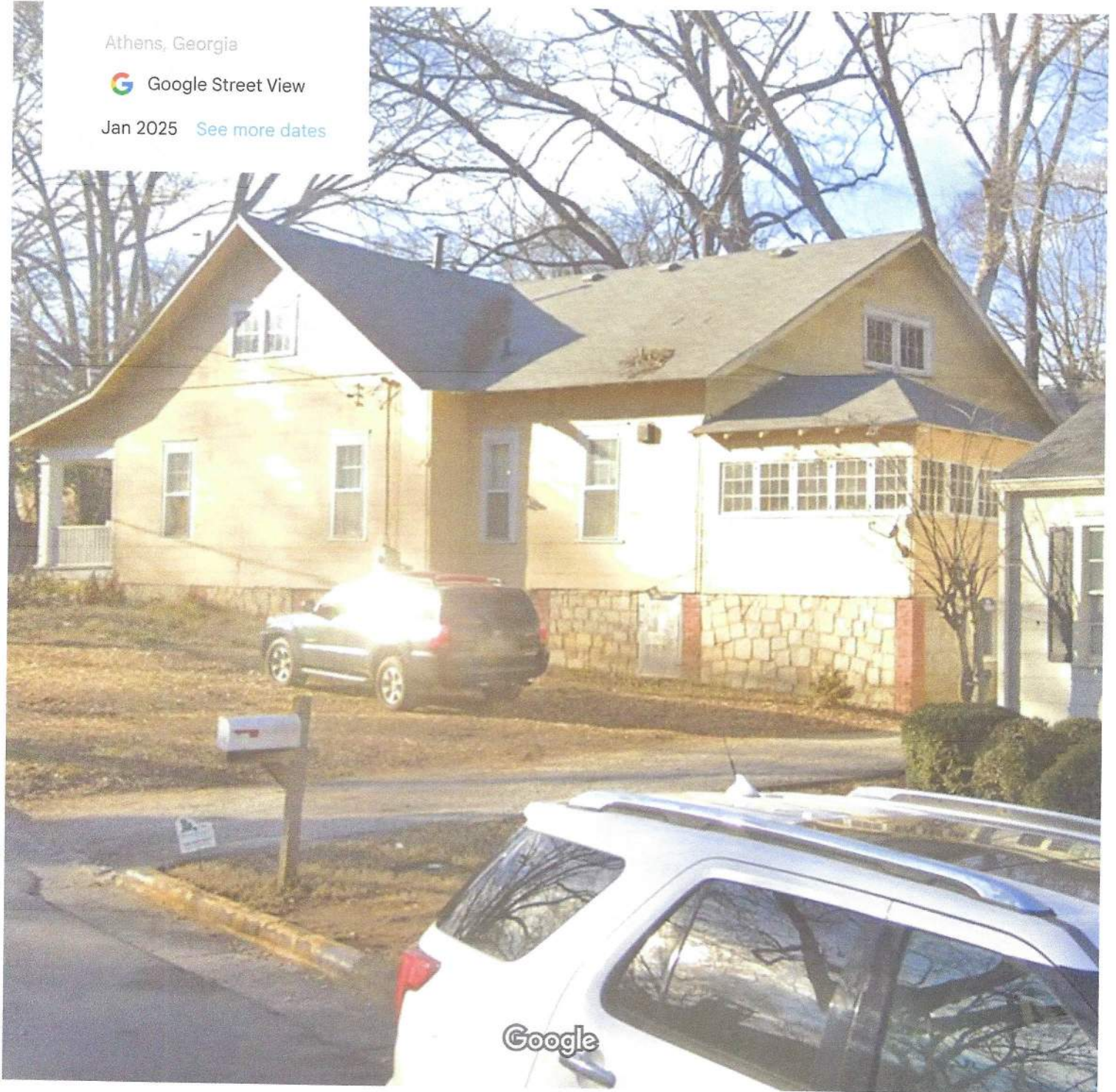
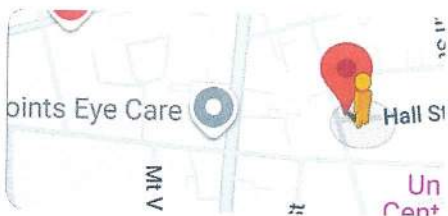


Image capture: Jan 2025 © 2025 Google



P2.1



P3

Athens, Georgia

 Google Street View

Jan 2025 [See more dates](#)

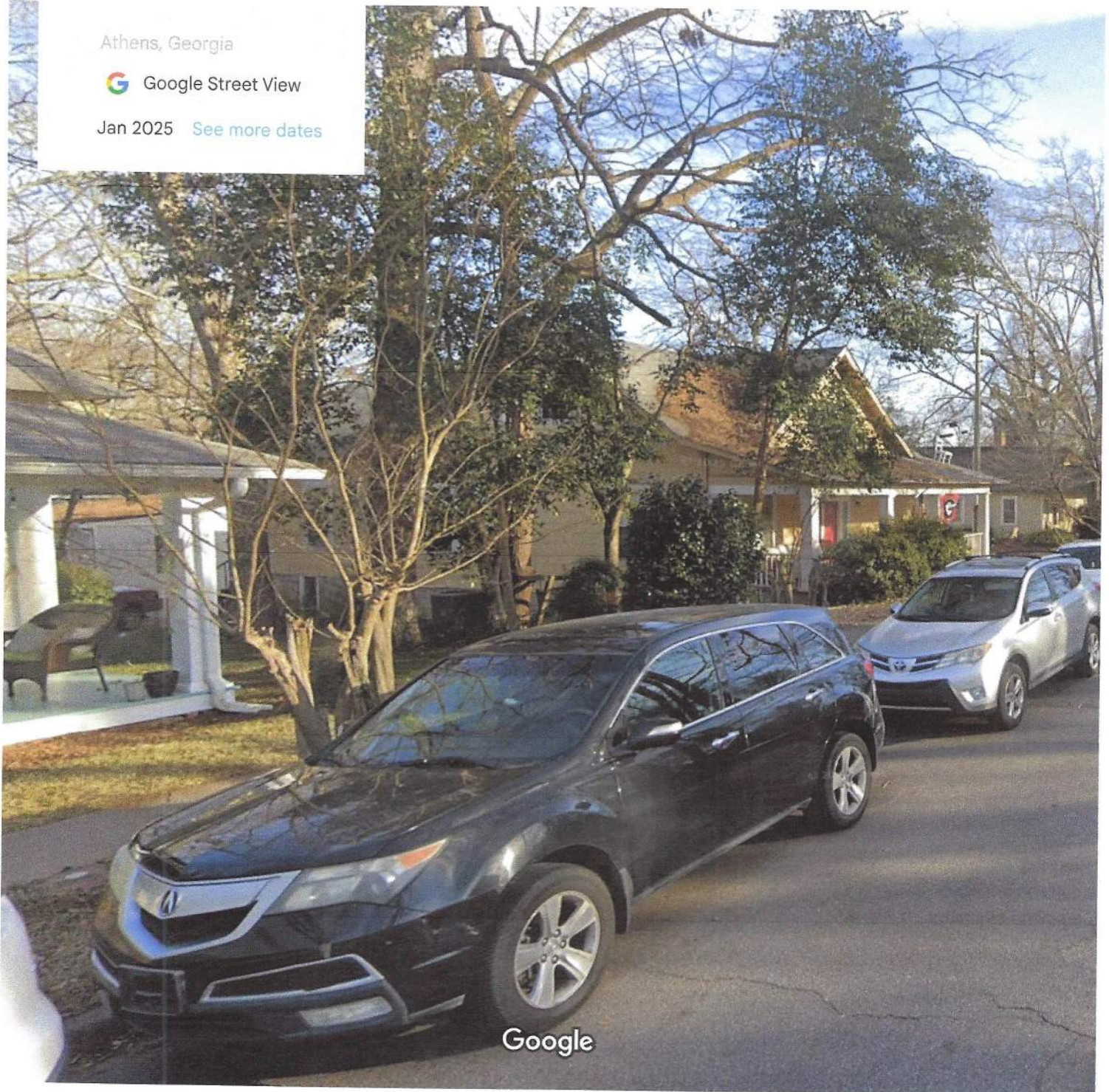
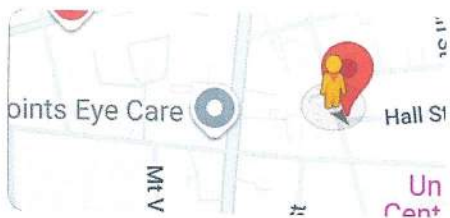



Image capture: Jan 2025 © 2025 Google



P3.1



Athens, Georgia

 Google Street View

Jan 2025 [See more dates](#)

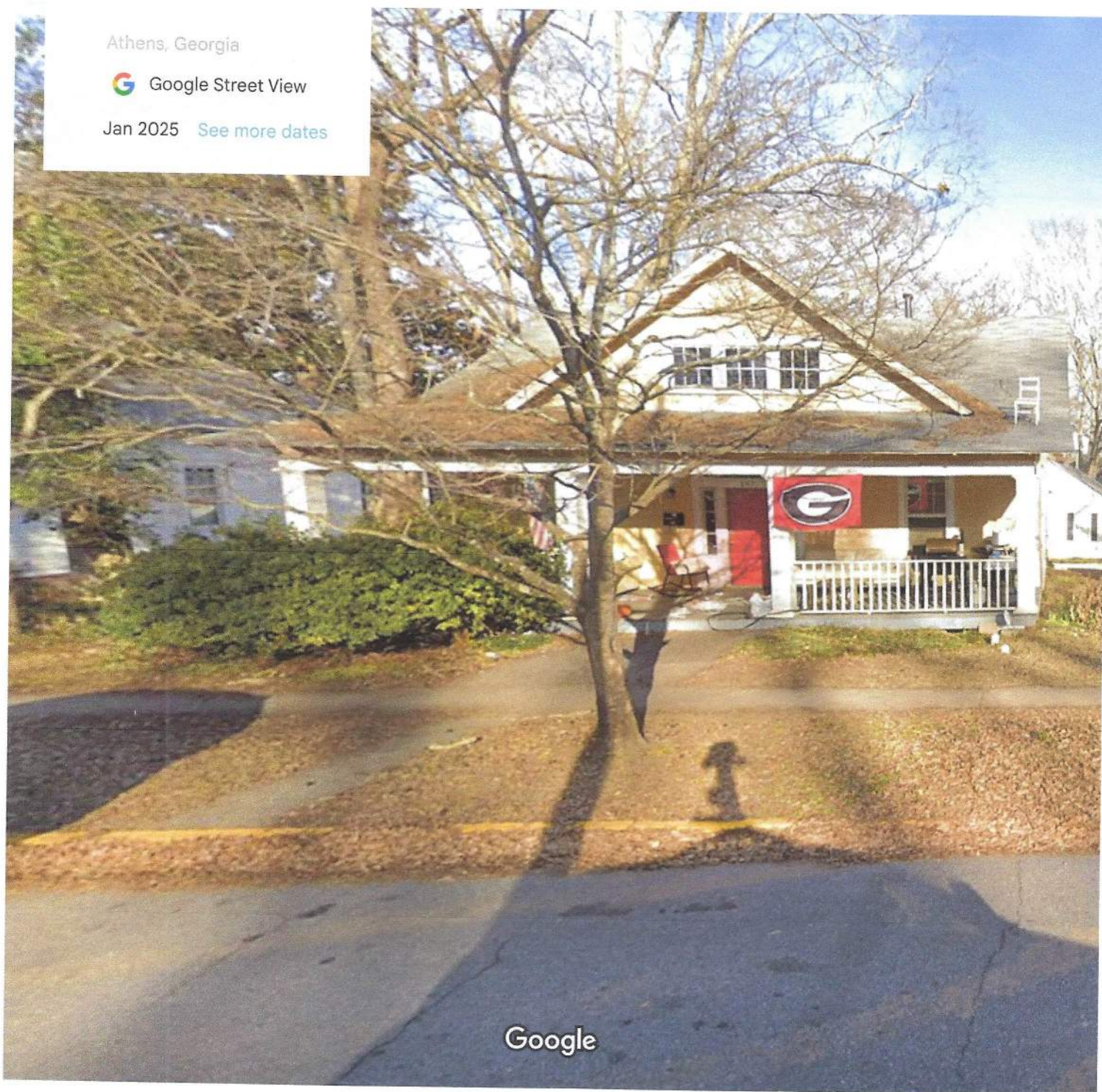
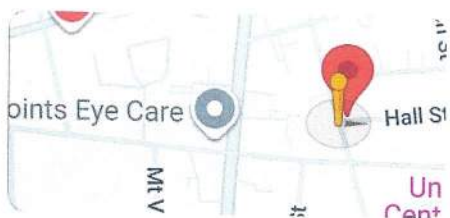


Image capture: Jan 2025 © 2025 Google



P4.1



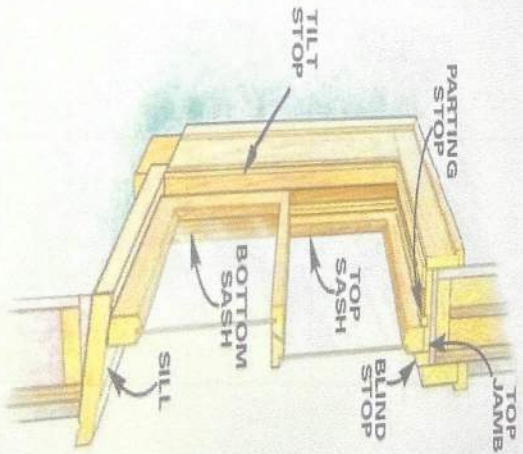
P7

Stock Window Sizes

Masonry Opening Range	Overall Height					Overall Width		
	2'	2'	3'	3'	4'	4'	5'	6'
1' x 1 1/4								
1' x 1 1/2								
1' x 2								
1' x 2 1/4								
1' x 2 1/2								
1' x 3								
1' x 3 1/4								
1' x 3 1/2								
1' x 4								
1' x 4 1/4								
1' x 4 1/2								
1' x 5								
1' x 5 1/4								
1' x 5 1/2								
1' x 6								
1' x 6 1/4								
1' x 6 1/2								
2' x 2								
2' x 2 1/4								
2' x 2 1/2								
2' x 3								
2' x 3 1/4								
2' x 3 1/2								
2' x 4								
2' x 4 1/4								
2' x 4 1/2								
2' x 5								
2' x 5 1/4								
2' x 5 1/2								
2' x 6								
2' x 6 1/4								
2' x 6 1/2								
3' x 3								
3' x 3 1/4								
3' x 3 1/2								
3' x 4								
3' x 4 1/4								
3' x 4 1/2								
3' x 5								
3' x 5 1/4								
3' x 5 1/2								
3' x 6								
3' x 6 1/4								
3' x 6 1/2								
4' x 4								
4' x 4 1/4								
4' x 4 1/2								
4' x 5								
4' x 5 1/4								
4' x 5 1/2								
4' x 6								
4' x 6 1/4								
4' x 6 1/2								
5' x 5								
5' x 5 1/4								
5' x 5 1/2								
5' x 6								
5' x 6 1/4								
5' x 6 1/2								
6' x 6								
6' x 6 1/4								
6' x 6 1/2								

ENERGY STAR
Double Hung Sash (boot glazed)
Wood frame, double glazed
Low E coating (e=0.042, s2)

Energy Performance Ratings	
U-Factor (U.S./I-P)	Solar Heat Gain coefficient
0.31	0.27
Additional Performance Ratings	
Visible Transmittance	Condensation Resistance
.50	56





- Exterior wood primed and ready to accept paint.
- Interior natural wood can be painted or stained
- Foam filled weather-stripping between top and bottom sash
- Compression balance provides tilting of sash for hassle-free cleaning of exterior glass
- Entire length of bottom sash rail routed with finger lift for easy operation

<ul style="list-style-type: none"> • Grill options include 1LT, GBG, or SDL. SDL may be 7/8" or 1 1/4", PVC or wood. 	<ul style="list-style-type: none"> • Cardinal Insulated double pane glass, available clear IG or Low-E. Some sizes may be tempered. 	<ul style="list-style-type: none"> • Non-rot Marley PVC sill standard • Truth sash lock standard 	<ul style="list-style-type: none"> • Primed brickmould standard. PVC brickmould & 1x4bb available • Primed blindstop standard, PVC blindstop available
---	--	--	--

Dyke Industries, Inc.
www.dykeatlanta.com
 (770) 441-9811

April 2008



Asking to
Replace.

Replaced

PI



Asking to
Replace.

Replaced

P3



Replaced.