

TREE INVENTORY					
SPECIES	COMMON NAME	CANOPY	QTY	% OF SPECIES	TOTAL CANOPY
KEEP					
<i>Pinus taeda</i>	Pine, Loblolly	1,600	2	100.00%	3200
<i>Quercus falcata</i>	Oak, Southern Red	1,600	4	200.00%	6400
SPECIES	COMMON NAME	CANOPY	QTY	% OF SPECIES	TOTAL CANOPY
REMOVE					
<i>Lagerstroemia indica</i>	Crapemyrtle, Common	150	1	50.00%	150
<i>Cornus florida</i>	Dogwood, Flowering	400	1	50.00%	400

TREE MANAGEMENT PLAN NOTES:

SEC. 8-7-17 TREE PROTECTION STANDARDS

NO LANDMARK TREES EXIST ON SITE.
NO TREES GREATER THAN OR EQUAL TO 18 INCHES DBH EXIST ON SITE.
50% OF TOTAL SITE AREA SHALL BE COVERED BY EITHER PRESERVED OR PLANTED TREES.
25% OF TREE CANOPY SHALL BE EITHER PRESERVED OR PLANTED CANOPY COVER.

TOTAL SITE AREA = 28,052 SF / 0.644 AC
REQUIRED TOTAL TREE CANOPY AREA (50% MIN.) = 14,026 SF REQUIRED | 14,400 SF PROVIDED
PRESERVED CANOPY (25% MIN.) = 7,013 SF REQUIRED | 9,600 SF PROVIDED
PLANTED CANOPY = 4,800 SF
REMOVED CANOPY = 650 SF

ATHENS-CLARKE COUNTY TREES OR TREES ON PRIVATE PROPERTY CONSERVED AND PLANTED TO MEET TREE CANOPY COVER REQUIREMENTS SHALL BE ACTIVELY PROTECTED DURING DEVELOPMENT, BASED ON ANSI AND ISA BMPs, AND PASSIVELY THROUGHOUT THEIR LIFE IN ACCORDANCE WITH THE REQUIREMENTS FOR PROTECTED TREES SET FORTH IN SECTION 8-7-16.

1. PROHIBITED ACTIVITIES, THE FOLLOWING ACTIVITIES AND CONDITIONS, AND ANY OTHER ACTIVITIES AND CONDITIONS HARMFUL TO A TREE'S ROOTS, TRUNK, OR CROWN, WITHIN THE TREE PROTECTION ZONE ARE PROHIBITED:
- A. VEHICLE OR EQUIPMENT TRAFFIC, PARKING, OR STORAGE.
 - B. MATERIALS OR SUPPLIES STORAGE.
 - C. PLACEMENT OF TEMPORARY OR PERMANENT STRUCTURES.
 - D. EQUIPMENT MAINTENANCE OR WASHOUT.
 - E. WOUNDING OF TRUNK.
 - F. WOUNDING OR BREAKAGE OF SCAFFOLD LIMBS OR BRANCHES GREATER THAN SIX INCHES IN DIAMETER.
 - G. TOPPING OR OTHER IMPROPER PRUNING, SUCH AS STUB CUTS OR FLUSH CUTS.
 - H. FIRES, EXCESSIVE HEAT FROM EQUIPMENT EXHAUST PIPES.


SEC. 8-7-15 TREE CANOPY COVER REQUIREMENTS BY ZONING DISTRICT

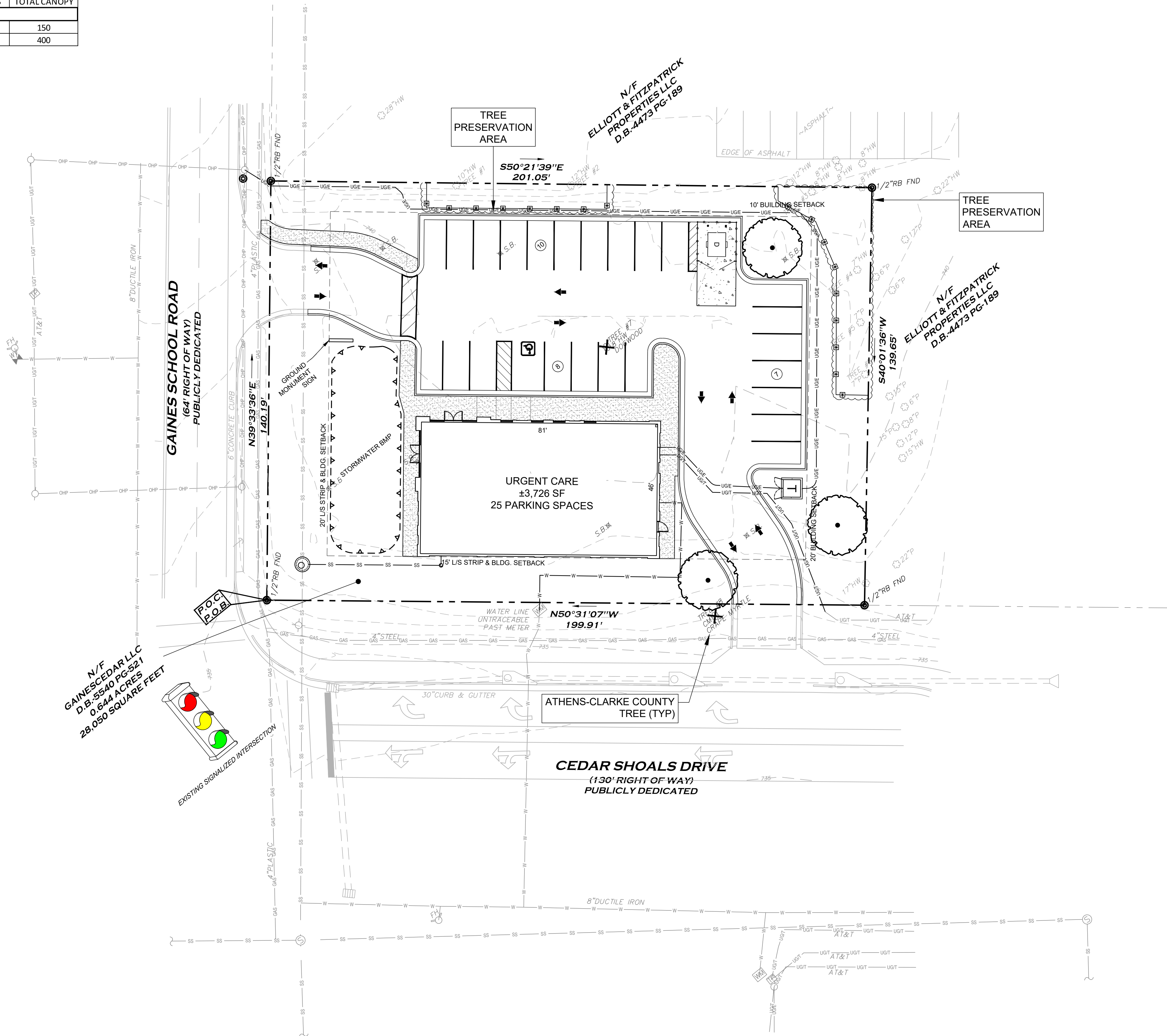
DISTRIBUTION OF TREE CANOPY COVER. THE TREE CANOPY COVER SHALL BE DISTRIBUTED THROUGHOUT THE SITE OR LOT, IN PARKING LOTS, WITHIN THE ADJOINING STREET RIGHTS-OF-WAY, AND WITHIN THE SIDE, FRONT, AND REAR YARDS OF THE LOT

TREE PROTECTION FENCING NOTES

- TREE PROTECTION FENCING SHALL BE INSTALLED PRIOR TO ANY LAND DEVELOPMENT OR LAND DISTURBANCE ACTIVITY AROUND A TREE AT THE LOCATION OF THE TREE PROTECTION ZONE AND SHALL REMAIN IN PLACE UNTIL CONSTRUCTION ACTIVITIES END OR A CERTIFICATE OF OCCUPANCY IS ISSUED, WHICHEVER IS LATER.
- TREE PROTECTION FENCING SHALL BE FOUR FEET HIGH, HIGH-VISIBILITY POLYPROPYLENE FENCING ERECTED WITH STURDY POSTS.
- ACTIVITIES DESCRIBED IN SECTION 8-7-19(h)(1) AND (2) SHALL BE PROHIBITED WITHIN THE TREE PROTECTION ZONE.
- LOW HANGING LIMBS THAT MAY BE DAMAGED BY EQUIPMENT TRAFFIC OR OTHER CONSTRUCTION ACTIVITIES SHALL BE PRUNED PRIOR TO THE COMMENCEMENT OF ANY LAND DEVELOPMENT/LAND DISTURBANCE ACTIVITY. ALL PRUNING SHALL BE IN ACCORDANCE WITH THE PRUNING STANDARDS SET FORTH IN SECTION 8-7-19 (j).
- WHEN EQUIPMENT MOVEMENT IS SUCH THAT DAMAGE TO TREE TRUNKS IS POSSIBLE, THEN TREE TRUNKS SHALL BE WRAPPED VERTICALLY WITH ONE LAYER OF TWO INCH BY FOUR INCH LUMBER SPACED A MAXIMUM OF 12 INCHES APART, AND COVERED WITH CORRUGATED CARDBOARD SECURED WITH STRAPPING. THE WRAPPING SHALL REMAIN ON THROUGHOUT THE PERIOD OF POTENTIAL DAMAGE.

PLANT SCHEDULE

SYMBOL	QTY	BOTANICAL / COMMON NAME	CONT	CAL
TREES				
	3	QUERCUS SHUMARDII / SHUMARD RED OAK CANOPY = 1,600 SF	B & B	2" CAL



5 TREE PROTECTION

1/4" = 1'-0"

FX-PL-FX-TRMT-02

URBAN TREE FOUNDATION © 2014
OPEN SOURCE TREE TO USE

Printed on: 10/20/2024 4:48:58 PM By: JAVIER EDWARDS - Shumard Red Oak 1" = 1'

F:\103.035 PEACHTREE IMMEDIATE CARE - ATHENS, GEORGIA\1. LANDSCAPE BUILDINGS - Shumard Red Oak 1" = 1'

ENGINEER:

FORESITE
group

Foresite Group, LLC
3740 Davinci Ct.
Suite 100
Peachtree Corners, GA 30092
P | 770.368.1399
F | 770.368.1944
W | www.foresitegroup.net

DEVELOPER:

TW ATHENS-GAINES SCHOOL RD., LLC
2923 CRESCENT AVE.
HOMEWOOD, AL 35209
(205) 223-4850

CONTACT: ANDREW CRONIN

PROJECT:

SEAL:

REVISIONS

DATE

PROJECT MANAGER:

DMS

DRAWING BY:

SE

JURISDICTION:

ATHENS, CLARKE COUNTY, GA

DATE:

2025-01-03

SCALE:

1" = 20'

TITLE:

TREE MANAGEMENT PLAN

SHEET NUMBER:

TMP-1

COMMENTS:

NOT RELEASED FOR CONSTRUCTION

JOB/FILE NUMBER:

1063.018