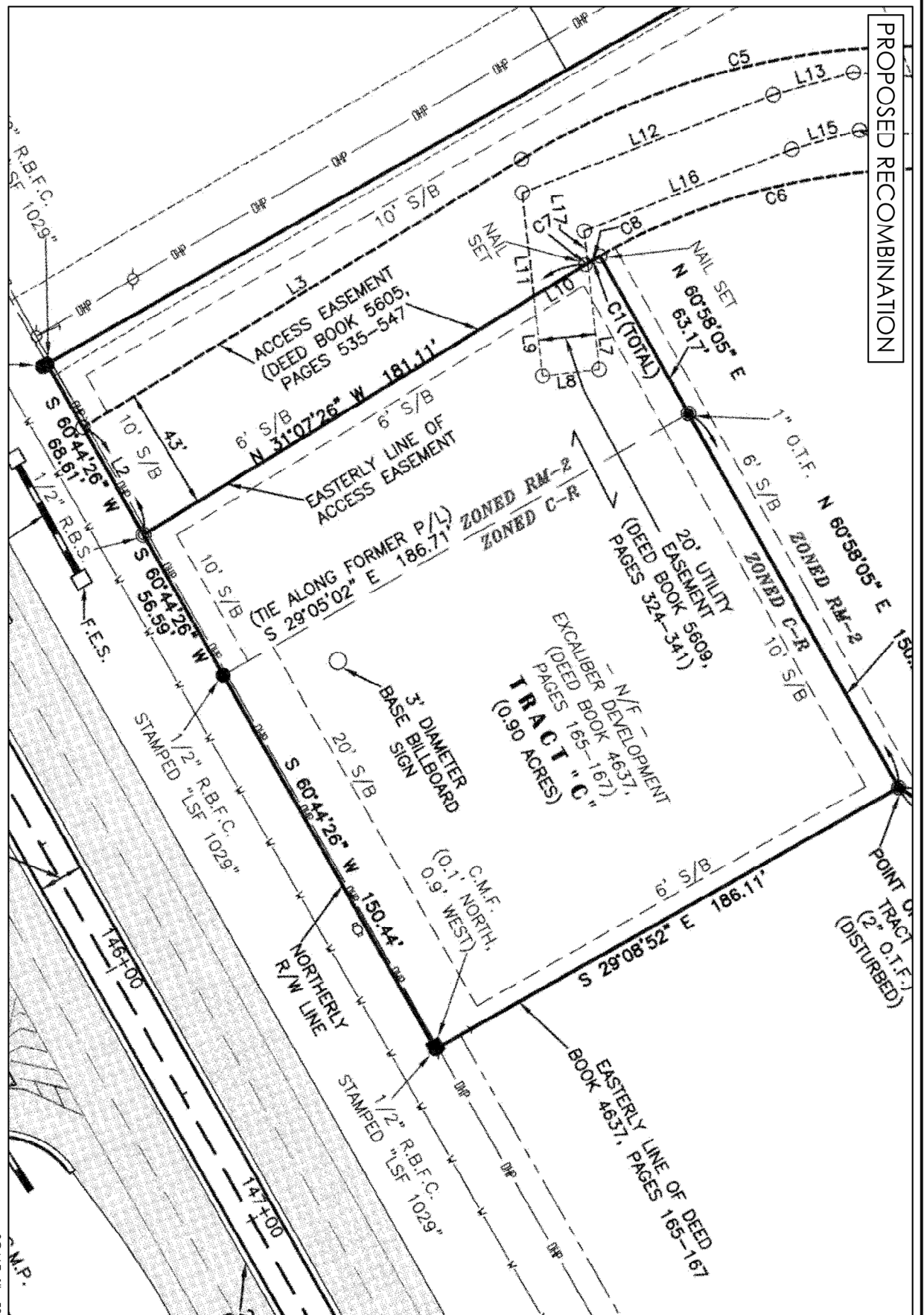

PROPOSED RECOMBINATION

File	Size	Pos
1	60.04 K	4.022
2	41.07 K	1.793
3	40.17 K	0.782
4	40.17 K	0.782
5	40.17 K	0.782
6	40.17 K	0.782
7	40.17 K	0.782
8	40.17 K	0.782
9	40.17 K	0.782
10	40.17 K	0.782
11	40.17 K	0.782
12	40.17 K	0.782
13	40.17 K	0.782
14	40.17 K	0.782
15	40.17 K	0.782
16	40.17 K	0.782
17	40.17 K	0.782
18	40.17 K	0.782
19	40.17 K	0.782
20	40.17 K	0.782
21	40.17 K	0.782
22	40.17 K	0.782
23	40.17 K	0.782
24	40.17 K	0.782
25	40.17 K	0.782
26	40.17 K	0.782
27	40.17 K	0.782
28	40.17 K	0.782
29	40.17 K	0.782
30	40.17 K	0.782
31	40.17 K	0.782
32	40.17 K	0.782
33	40.17 K	0.782
34	40.17 K	0.782
35	40.17 K	0.782
36	40.17 K	0.782
37	40.17 K	0.782
38	40.17 K	0.782
39	40.17 K	0.782
40	40.17 K	0.782
41	40.17 K	0.782
42	40.17 K	0.782
43	40.17 K	0.782
44	40.17 K	0.782
45	40.17 K	0.782
46	40.17 K	0.782
47	40.17 K	0.782
48	40.17 K	0.782
49	40.17 K	0.782
50	40.17 K	0.782
51	40.17 K	0.782
52	40.17 K	0.782
53	40.17 K	0.782
54	40.17 K	0.782
55	40.17 K	0.782
56	40.17 K	0.782
57	40.17 K	0.782
58	40.17 K	0.782
59	40.17 K	0.782
60	40.17 K	0.782
61	40.17 K	0.782
62	40.17 K	0.782
63	40.17 K	0.782
64	40.17 K	0.782
65	40.17 K	0.782
66	40.17 K	0.782
67	40.17 K	0.782
68	40.17 K	0.782
69	40.17 K	0.782
70	40.17 K	0.782
71	40.17 K	0.782
72	40.17 K	0.782
73	40.17 K	0.782
74	40.17 K	0.782
75	40.17 K	0.782
76	40.17 K	0.782
77	40.17 K	0.782
78	40.17 K	0.782
79	40.17 K	0.782
80	40.17 K	0.782
81	40.17 K	0.782
82	40.17 K	0.782
83	40.17 K	0.782
84	40.17 K	0.782
85	40.17 K	0.782
86	40.17 K	0.782
87	40.17 K	0.782
88	40.17 K	0.782
89	40.17 K	0.782
90	40.17 K	0.782
91	40.17 K	0.782
92	40.17 K	0.782
93	40.17 K	0.782
94	40.17 K	0.782
95	40.17 K	0.782
96	40.17 K	0.782
97	40.17 K	0.782
98	40.17 K	0.782
99	40.17 K	0.782
100	40.17 K	0.782

[illegible]

SCALE: 1" = 50'

24225-02

1055 HULL RD
REZONE APPLICATION
1055 HULL RD
ATHENS, GEORGIA 30607

EXHIBIT
C
PROPOSED
RECOMBINATION

amt ENGINEERS
ARCHITECTS
PLANNERS

Armentrout • Matheny • Thurmond

OAKBROOK CORPORATE CAMPUS
330 RESEARCH DRIVE, SUITE A240
ATHENS, GEORGIA, USA 30605-2760

PHONE: (706) 548.8211
FAX: (706) 548.1814
www.amtathens.com